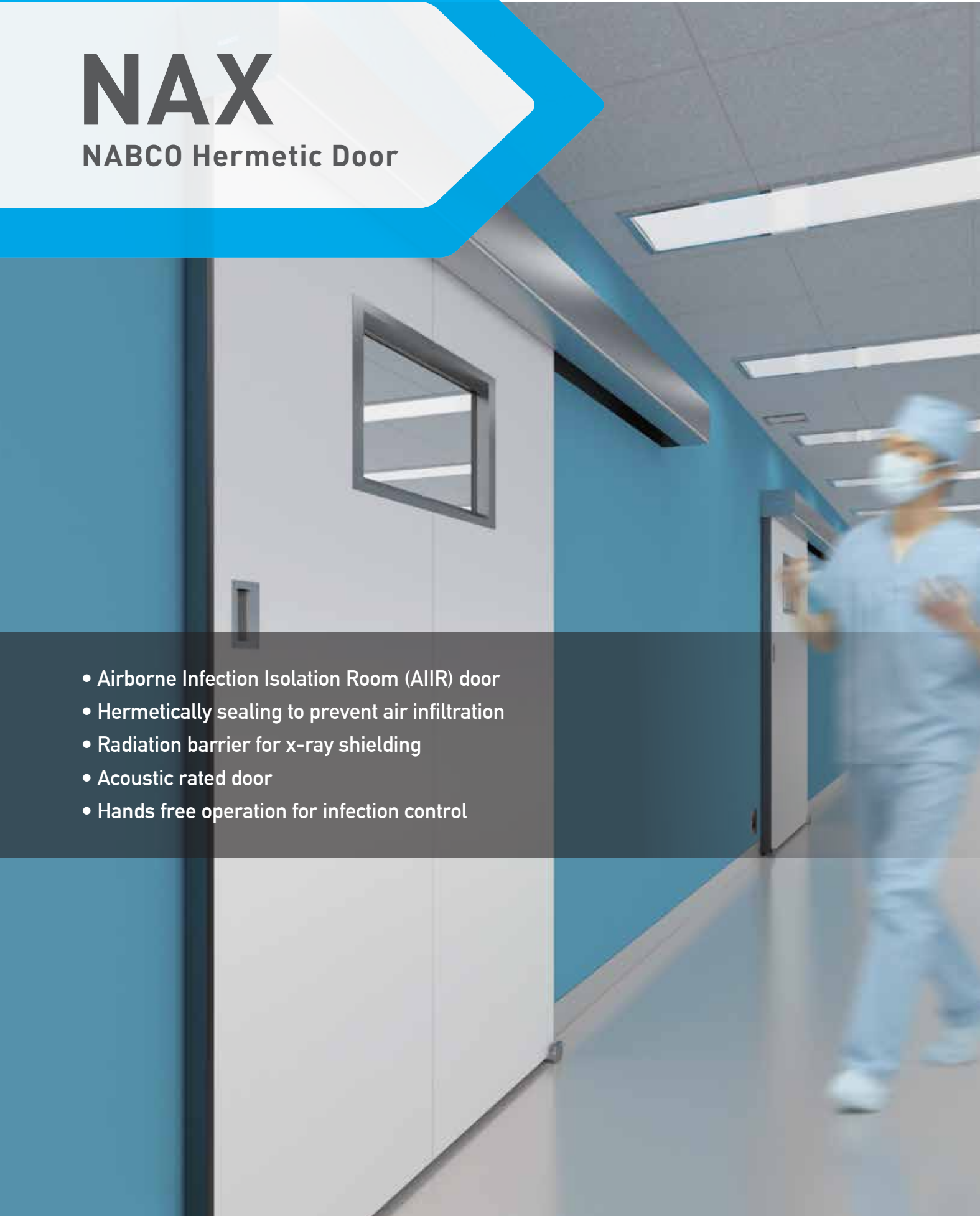


# NAX

## NABCO Hermetic Door

- Airborne Infection Isolation Room (AIIR) door
- Hermetically sealing to prevent air infiltration
- Radiation barrier for x-ray shielding
- Acoustic rated door
- Hands free operation for infection control

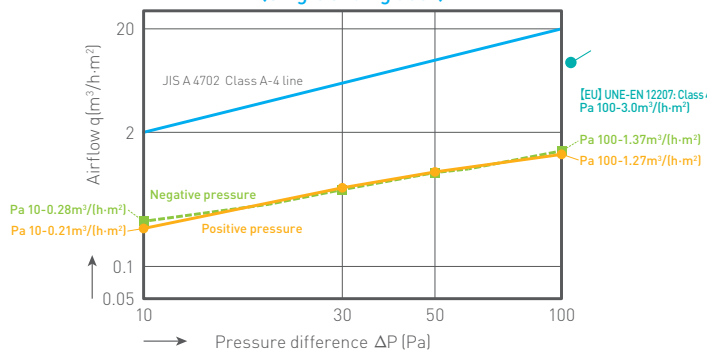




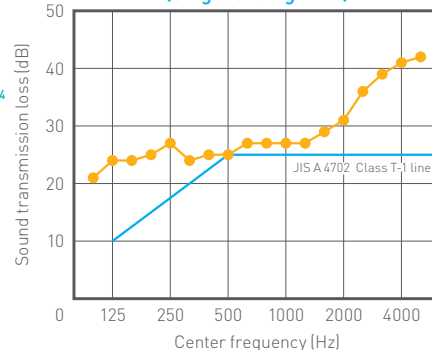
NABCO'S NAX Hermetic Door is a surface mounted automatic sliding door that meets the demanding requirements of environments where hygiene control and noise reduction are critical. The door remains in the closed position even if there is a power outage maintaining airtight performance, but still allowing the door to open and close manually. NABCO's NAX Hermetic Door exceeds North America's expectations by offering minimal air leakage, a low profile, sleek design and the convenience to open completely for full clearance.

- |                            |  |
|----------------------------|--|
| <b>Air Leakage Control</b> | <ul style="list-style-type: none"> <li>● Exceeds North American expectations</li> <li>JIS A 4702: Class A-4   UNE-EN 12207: Class 4</li> </ul>                                       |
| <b>Design</b>              | <ul style="list-style-type: none"> <li>● Low profile, sleek design</li> <li>● Variety of door leaves and handles</li> </ul>  |
| <b>Convenience</b>         | <ul style="list-style-type: none"> <li>● Provides full clearance for door opening</li> <li>● Easy manual opening in case of power failure</li> <li>● Low maintenance cost</li> </ul> |

**NAX Airtightness performance (Single sliding door)**



**NAX Sound insulation performance (Single sliding door)**



## Examples of use

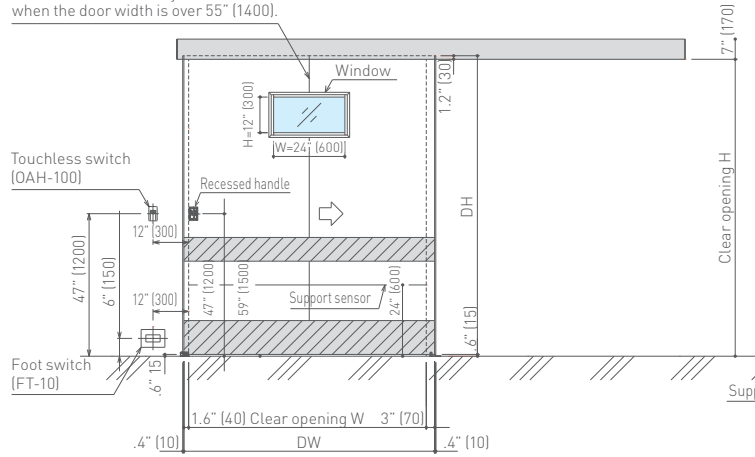
- |   |   |   |   |   |
|---|---|---|---|---|
| ● <b>Operating room</b><br>Requires minimal air leakage | ● <b>Radiotherapy room</b><br>Requires X-ray shield | ● <b>Food processing factory</b><br>Requires hygiene management (HACCP) | ● <b>Warehouse/Factory</b><br>Requires air conditioning | ● <b>Conference room</b><br>Requires sound insulation |
|---|---|---|---|---|

## Dimension

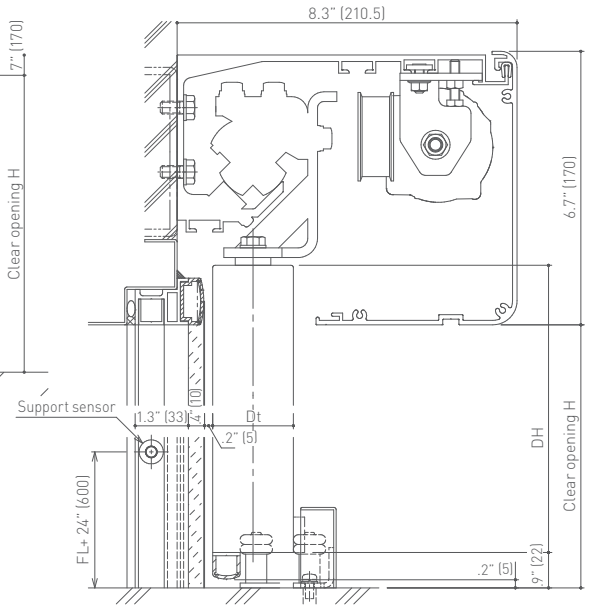
### ● Elevation

【Stainless steel】There is a joint line when the door width is over 43" (1100).

【Aluminum】There is a joint line when the door width is over 55" (1400).



### ● Section



\*The section shows when the door is fully opened

\*Handle, window, waist plate, kick plate and lock are optional

## Specifications

Use applications		Air leakage control + Sound insulation		Air leakage control + Sound insulation + X-ray shield	
		Aluminum/Stainless steel/Glass	Bi parting (coming soon)	Aluminum	Stainless steel
Door leaf		Aluminum/Stainless steel/Glass		Aluminum	Stainless steel
Door type		Single	Bi parting (coming soon)	Single	Single
Clear opening inches (mm)	Width (W)	28" (700) - 79" (2000)	47" (1200) - 110" (2800)	28" (700) - 63" (1600)	28" (700) - 43" (1100)
	Height (H)	75" (1900) - 98" (2500)	75" (1900) - 98" (2500)	75" (1900) - 98" (2500)	75" (1900) - 98" (2500)
Max weight		330 lbs (150kg)			
Opening speed		up to 0.03 ft/s			
Hold open time		adjustable			
Ambient temperature		14°F (-10°C) - 122°F (50°C)			
Operating voltage		120 VAC - 5 AMP Note: with transformer specified by NABCO			
Auxiliary power output		45Wh			
Air permeability		A-4 (JIS A 4702)			
Sound insulation		T-1 (JIS A 4702)*1		T-1 (JIS A 4702)	
X-ray shield		—		Lead plate 3/4" (2 mm)	

\*1 The type of glass door leaf has T-2 class of sound insulation.  
If T-2 class is required for aluminum/stainless door leaf, please contact our sales distributor.

## Door leaf options

3 types of door leaves are available to meet your needs

Aluminum



Stainless steel



Glass



## Handle options

3 types of handles are available in case of power failure

Recessed handle



Tubular handle



Lever handle



## Detection device (Optional)



Touchless activation



## Window options

3 types of windows are available to meet your needs

Double-sided flat frame



Aluminum frame



Outside



Inside (flat frame)

Stainless steel frame



Outside



Inside (flat frame)

Flat frame prevents the accumulation of dust.



Member of Nabtesco Group

NABCO ENTRANCES INC.  
582 W18717 Gemini Drive | Muskego, WI 53150 | 877-622-2694 | Fax 888-679-3319  
www.NABCOentrances.com | Email info@NABCOentrances.com



Distributed by: