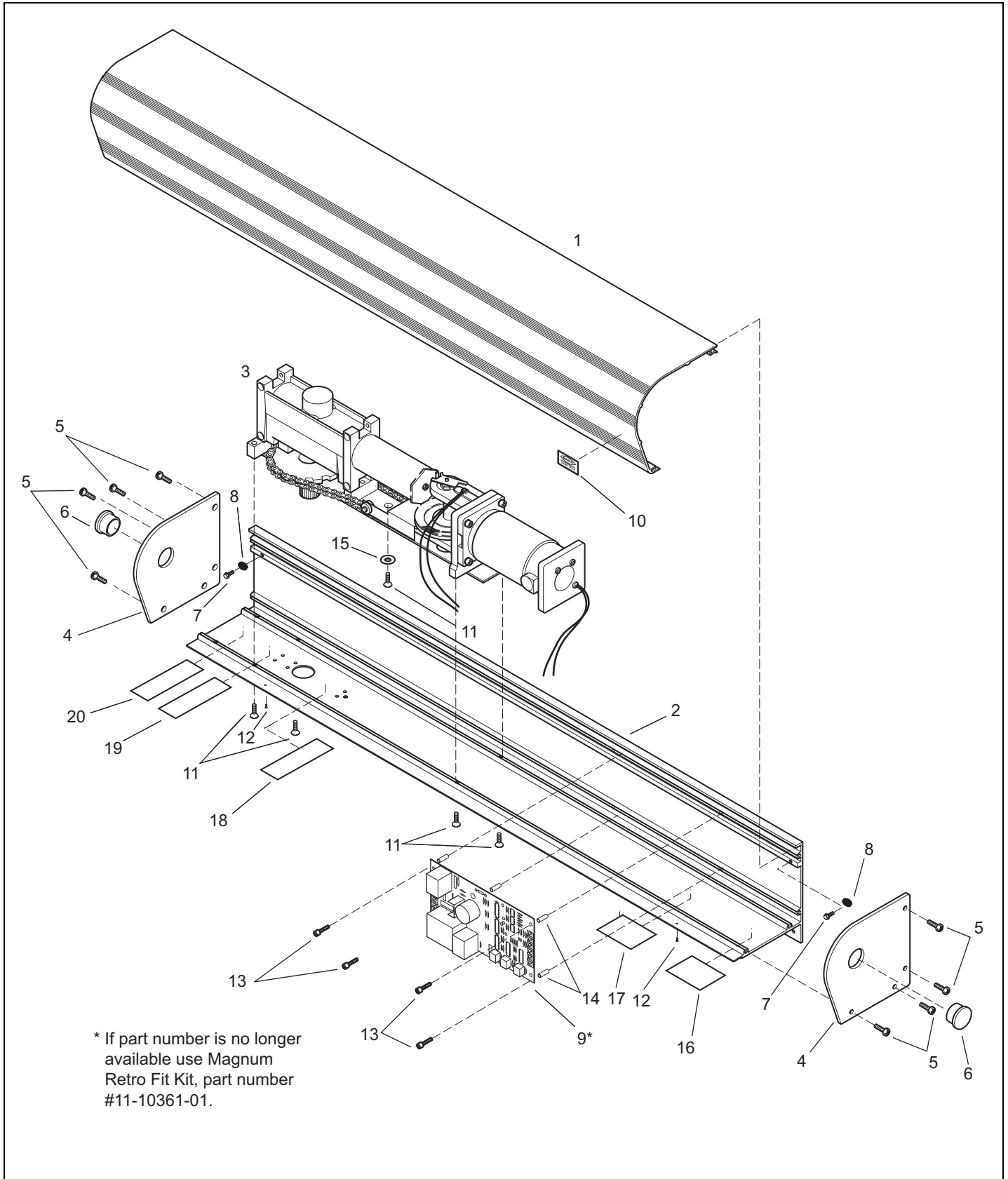


**Section H7**  
**GT710-CU, Pre Magnum, Single**

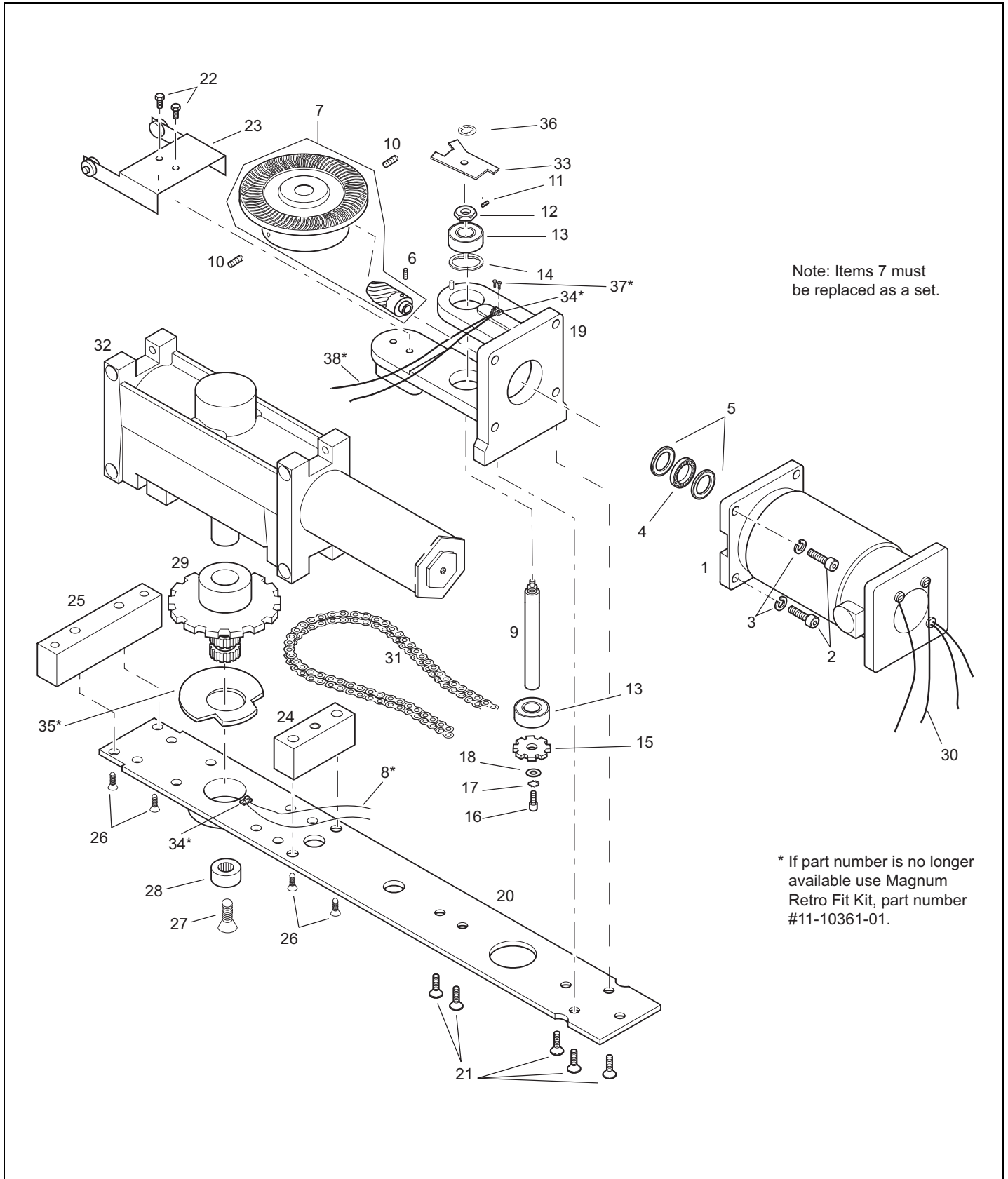
Header.....	3-4
Operator.....	5-6

**This Page Intentionally Left Blank**



\* If part number is no longer available use Magnum Retro Fit Kit, part number #11-10361-01.

Item	Part	Select Finish	Description
1	24-8723-1X	★	COVER - OPERATOR HOUSING 39 7/32
2	24-5693-0X	★	HEADER MACHINED - LH OUT / RH IN
	24-5694-0X	★	HEADER MACHINED - RH OUT / LH IN
3	41-5638-P1-R		REBUILT GT710 PREMAGNUM OPERATOR ASSY RH
	41-5638-P2-R		REBUILT GT710 PREMAGNUM OPERATOR ASSY LH
4	24-8724-0X	★	END CAP, BLANK- FOR 710
5	24-0015-61		RHMS, 1/4-20 X 3/4" PHIL SELFTAP
	24-0015-62		RHMS, 1/4-20 X 3/4"PHIL,SELFTAP
6	14-9511-04		PLUG, DOME
7	14-1517-01		SCREW, HEX HEAD 5/16-18 x 1/2 SELF TAP
8	14-1518-01		WASHER, CUP- .312 AD X .88 OD X .040 THK
9	21-8735		Obsolete - CONTROL BOARD ASSY, 710
10	14-9199		NAMEPLATE, ADHESIVE BACKED
11	24-0011-09		SCREW - PHILLIPS HD MACH 1/4-20 X 1
	24-0011-111		SCREW - PHILLIPS HD MACH 1/4-20 X 1
12	24-0094-04		SCREW, PHLLPS PAN HD MACH #8 X 5/8" AB
	24-0094-16		SCREW, PHLLPS PAN HD MACH #8 X 5/8" AB
13	24-0010-01		SHCS, 10-24 X 7/8CAD-UL PART
14	14-8743		SPACER - NYLON #10 X 5/8 3/8 OD
15	24-0017-02		WASHER, 7/16 ID X 1 OD X .083 THK
16	14-8667		DECAL, "USE COPPER WIRE ONLY"
17	14-5454		DECAL, "HAZARDOUS SHOCK"
18	14-8731		DECAL, BACK CHECK
19	14-8729		DECAL, MAIN SPEED
20	14-8730		DECAL, LATCH SPEED



Item	Part	Select Finish	Description
1	14-8703		MOTOR, LONG FRAME 115 VDC PERM. MAG.
2	24-0010-46		SCREW, SOCKET HEAD CAP #10-24 X 7/8"
3	24-0018-01		WASHER, .194 ID .334 OD .047 THK-UL PART
4	24-0418		BEARING, THRUST
5	24-0028		BEARING, RACE THRUST ( BULK PACK )
6	24-0016-56		SCREW, SET SQ HD, 1/4-28 X 3/8" KNRL PNT
7	12-13773		GEARSET USE 14-5574 & 14-8706
8	14-8738		LEAD SWITCH WIRE - DOOR OPEN- YELLOW
9	14-8707		OBSOLETE ———SHAFT, PRIMARY DRIVE
10	24-0016-57		SCREW, SET SQ HD, 1/4-28 X 5/8" CONE PNT
11	24-0016-55		SCREW, SET FLAT POINT - #5-40 X 1/8"
12	14-8708		NUT, ADJUSTING
13	24-0413		BEARING, BALL
14	24-0428		RING, RETAINING
15	14-5639		SPROCKET, 8 TOOTH
16	24-0010-32		SCREW - SOCKET HEAD CAP #10-24 X 1/2
17	24-0019-06		WASHER, EXT.#10
18	24-0017-04		WASHER, 1/4 ID X 9/16 OD X .049 THK, STL
19	44-8719		CASTING, CARRIER - GEAR
20	21-5641		WELDMENT, BASE PLATE - 710
21	24-0011-03		SCREW - PHILLIPS HD MACH #10-24 X 1/2
22	24-0014-22		HHCS, #10-24 X 3/8
23	12-9856		CHAIN TENSIONER ASSEMBLY
24	14-5643		MOUNT, MID, OPERATOR
25	14-5644		MOUNT, NOSE - OPERATOR
26	24-0011-112		SCREW, PHILLIPS FLAT HEAD #12-24 X 1 1/2
27	22-3590-17		SCREW - PHLS FL HD W-VIBR 1/4-20 X 2 1/2
28	24-11468		BEARING, NEEDLE
29	21-5648		WELDMENT, SHAFT/SPROCKET - 710, COMPLETE
30	14-8736		OBSOLETE, LEAD MOTOR - SET
31	24-5649		DRIVE CHAIN ASSY
32	24-5650-01		HYDRAULIC CLOSER, LON, RH, FOR GT710
	24-5650-02		HYDRAULIC CLOSER, LON, LH, GT710
33	14-8733		ACTUATOR - PUSH-N-GO
34	14-8732		MICROSWITCH, PUSH-N-GO
35	14-5645		CAM, ACTUATOR / DOOR OPEN
36	14-8756		RETAINING RING
37	24-0015-59		RHMS, #2-56 X 5/16" PHIL
38	14-8737		LEAD SWITCH WIRE- PUSH-N-GO - BLUE