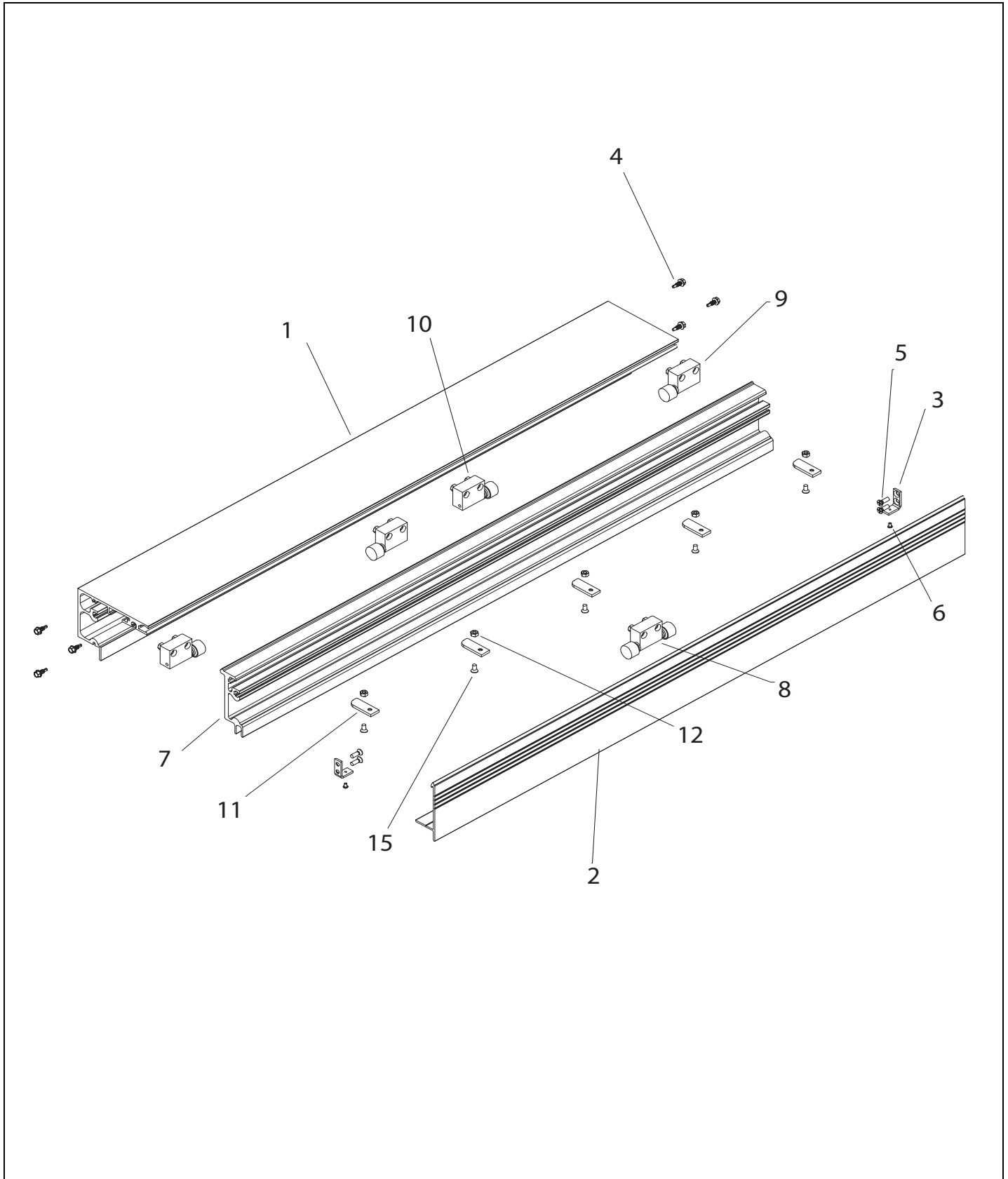


Section F4
GT2100T Telescopic, Trackless, Full Open

Header	3
Header Bill of Materials	4
Lead Door Left Hand	5
Lead Door Right Hand	6
Lead Door Bill of Materials	7-8
Trail Door Left hand	9
Trail Door Right Hand	10
Trail Door Bill of Materials	11-12
Swing Panel Left Hand	13
Swing Panel Right Hand	14
Swing Panel Bill of Material	15

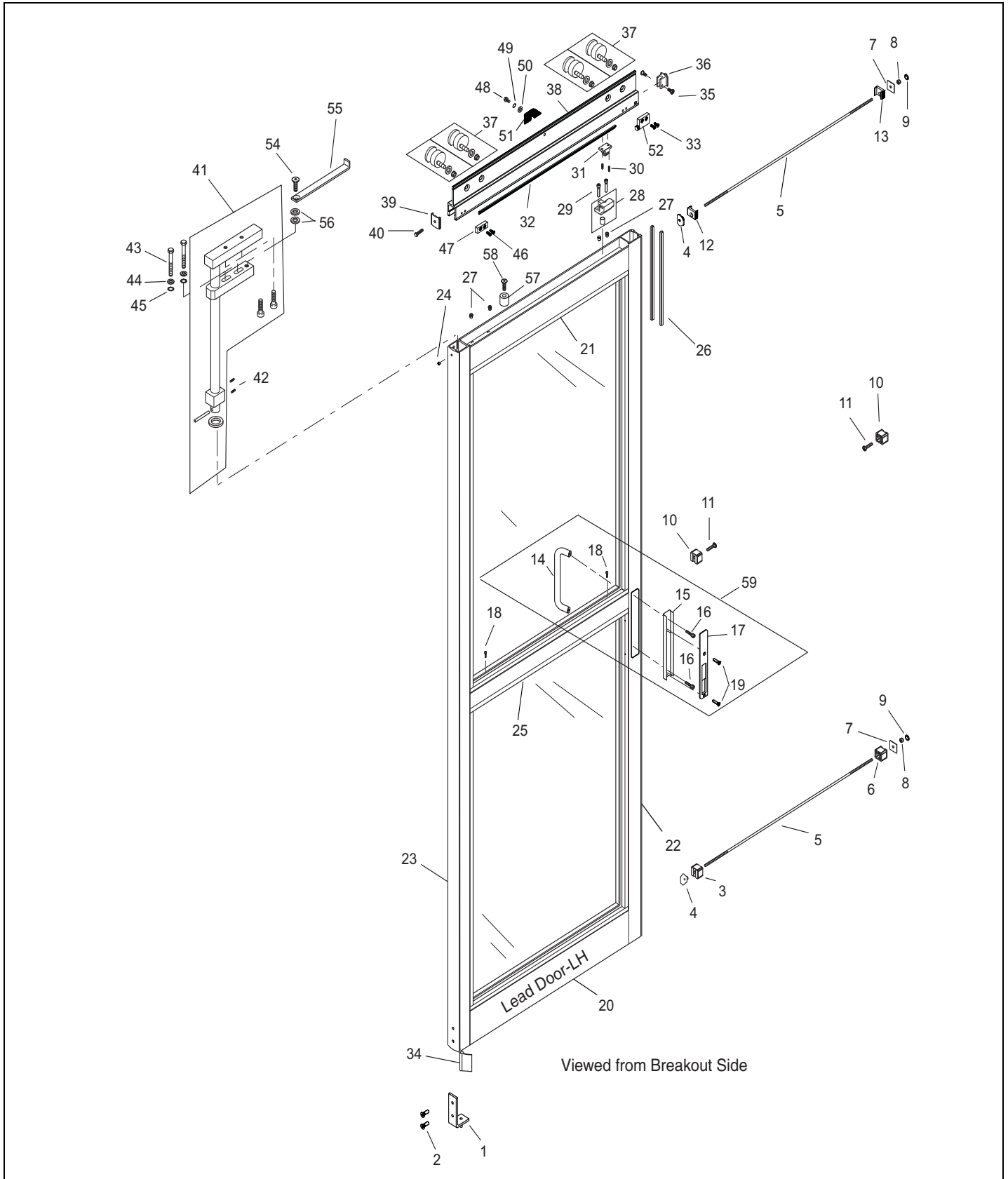
This Page Intentionally Left Blank

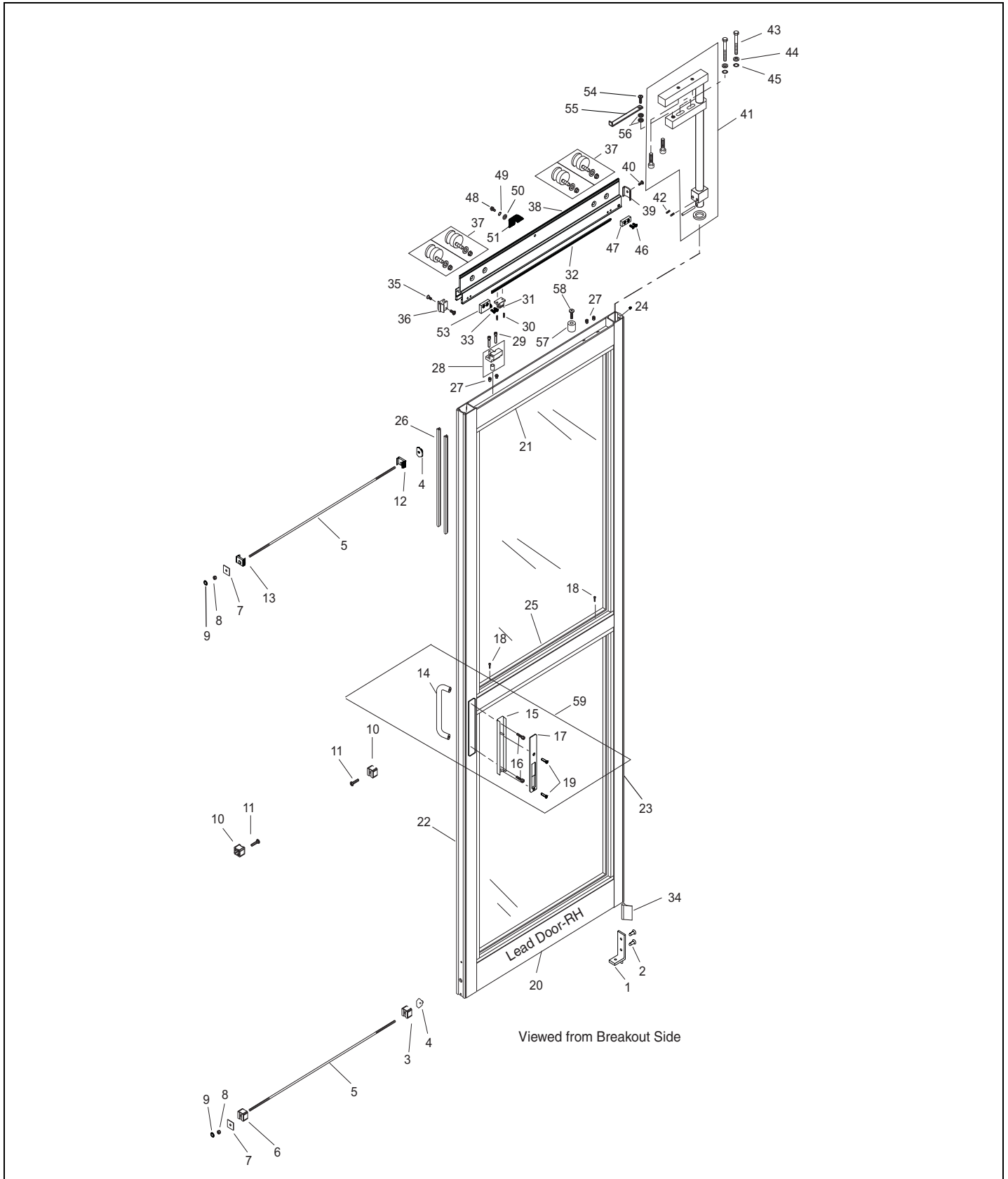


Item	Part	Select Finish	Description
1	Header		Contact NABCO (see note below)
2	Cover		Contact NABCO (see note below)
3	14-10727		CLIP, COVER
4	24-0014-30		SCREW - HEX HD CAP #14 X 3/4 SELF DR TP
5	24-0011-70		SCREW, PH HD MACH 1/4-20 X 7/16 UND ZP
6	24-0015-22		SCREW, PHILLIPS HD MACH #8-32 X 1/4"
7	Track		Contact NABCO (see note below)
8	12-11107		CENTER STOP W/SCREWS & NUTS
9	12-10829		END STOP ASSEMBLY - LH
10	12-10714		END STOP ASSEMBLY - RH
11	14-10710		RAIL CLAMP, TELESCOPIC
12	24-0021-14		HEX NUT 1/4"-20
13	24-0011-12		SCREW - PHILLIPS HD MACH 1/4-20 X 1/2

NOTE: Machining may vary depending on the age of the product. Have the original order number available when contacting NABCO if possible.

**GT2100T Telescopic, Trackless,
 Full Open
 Lead Door Left Hand**





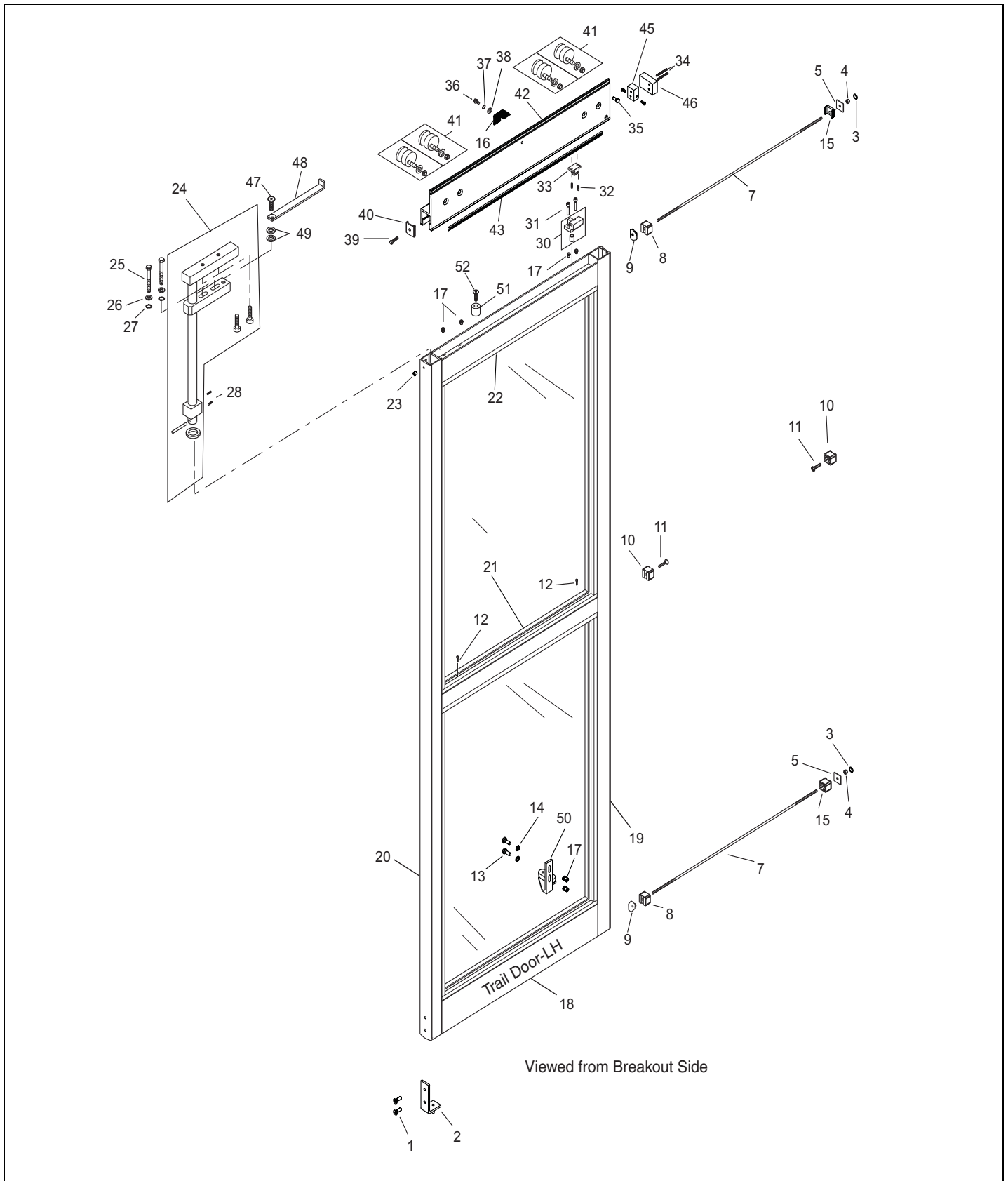
Item	Part	Select Finish	Description
1	12-10722		BOTTOM PIVOT BRACKET ASSY
2	24-0011-96		SCREW - PHILLIPS HD MACH 1/4-20 X 3/4
3	24-9503		CLIP, MUNTIN BAR - RAIL .500 HOLE
4	14-9279		OFFSET TEE NUT, 3/8"-16
5	14-3624		THREADED ROD, 3/8"-16 - ZINC PLATED
6	24-9504		CLIP, MUNTIN BAR - RAIL .386 HOLE
7	14-9225		BACKING PLATE, TIE ROD - DOOR ASSEMBLY
8	24-0021-21		NUT, WHIZLOCK, 3/8-16, ZINC
9	14-9511-04		PLUG, DOME
10	24-9502		CLIP, MUNTIN BAR - RAIL .261 HOLE
11	24-4941-02		SCREW, PH FL HD 1/4-20 X 1" TRILOBE FORM
12	14-10108-02		RAIL CLIP, 3 INCH-LARGE HOLE
13	14-10108-01		RAIL CLIP, 3 INCH-SMALL HOLE
14	24-3729-01		HANDLE, D, DOOR
	24-3729-02		HANDLE, D, DOOR
15	24-12956		BRACKET, ICU D/RECESSED HANDLE
16	24-0010-05		SCREW - SOCKET HEAD CAP 1/4-20 X 1/2
17	24-3438-01		DOOR PULL, RECESSED, ICU
	24-3438-02		DOOR PULL, RECESSED, ICU
18	24-0094-01		SCREW, PHLLPS PAN HD MACH #10 X 1/2" A
19	24-0011-138		SCREW, #8-32 X 1.00, FH, PHL, CLR ZINC
	24-0011-139		SCREW, #8-32 X 1.00, FH, PHL, BLK ZINC
20	Bottom Rail		Contact NABCO (see note below)
21	Top Rail		Contact NABCO (see note below)
22	Strike Stile		Contact NABCO (see note below)
23	Pivot Stile		Contact NABCO (see note below)
24	24-0016-33		SCREW, SET 5/16-24 X 1/2, CUP POINT
25	Muntin Bar		Contact NABCO (see note below)
26	14-8632		WEATHERING TRI POLY BLACK BULB T5BL
27	14-8640-04		RIVNUT, 1/4-20 AVK #AKS4-420-260
28	21-3468		PANIC CATCH RELEASE ASSY
29	24-0010-16		SCREW - SOCKET HEAD CAP 1/4-20 X 1 1/4
30	24-0016-30		SCREW, SET 5/16-18 X 1 1/4, CUP POINT
31	24-9483		MOUNTING BLOCK, PANIC CATCH - MACHINED
32	Interface Leg		Contact NABCO (see note below)
33	24-0011-107		SCREW - PHILLIPS HD MACH 1/4-20 X 7/8
34	14-5592-01		WEATHER STRIP -9/16 INCH FIN V65GR GRAY
	14-5592-02		WEATHER STRIP - ICU 9/16 INCH
35	24-0011-105		SCREW - PH HD MACH 10-32X1/2 UND CUT ZP
36	12-10882-01		CAP, END STRIKE SIDE ASSY. BULB
	12-10882-02		CAP, END CARRIER STRIKE SIDE ASSB 313
37	12-10027		ROLLER & HUB SUBASSY, TELESCOPING LEAD
38	Carrier		Contact NABCO (see note below)

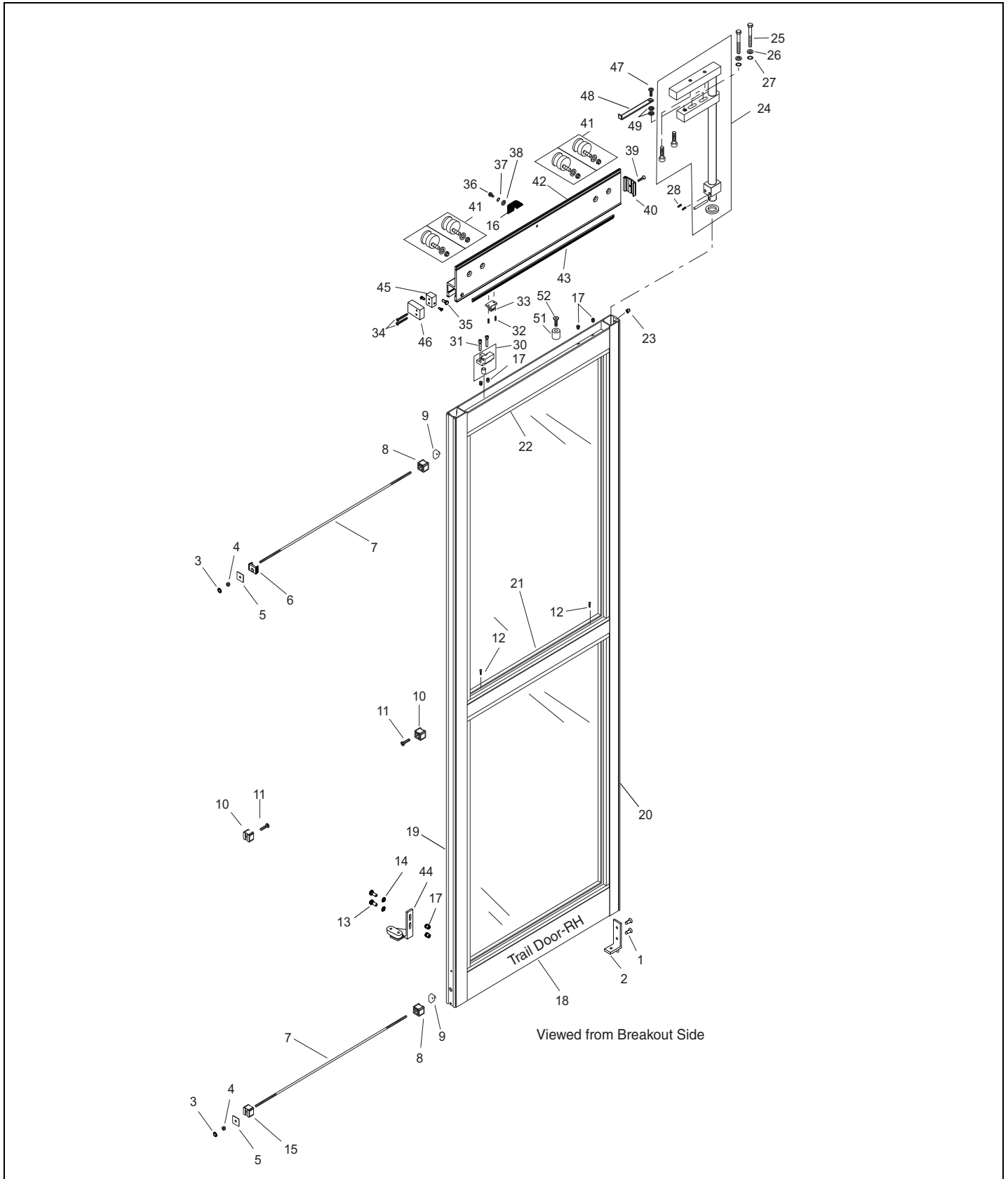
NOTE: Machining may vary depending on the age of the product. Have the original order number available when contacting NABCO if possible.

Item	Part	Select Finish	Description
39	14-10561-01		END CAP, PIVOT - TRAIL DOOR MILLED 204
	14-10561-02		END CAP, PIVOT - TRAIL DOOR 313
40	24-0011-53		SCREW - PHILLIPS HD MACH #10-32 X 1/2
41	Pivot Assembly		Contact NABCO (see note below)
42	24-0011-70		SCREW, PH HD MACH 1/4-20 X 7/16 UND ZP
43	24-0014-12		SCREW, HEX HD CAP 1/4-20 X 1 3/4"
44	24-0017-04		WASHER, 1/4 ID X 9/16 OD X .049 THK, STL
45	24-0019-05		WASHER, LOCK, 1/4", EXTERNAL TOOTH
46	24-0010-50		SCREW, SOCKET LOW HEAD CAP 1/4-20 X 3/8
47	14-12068		BUMPER - COME ALONG BRACKET
48	24-0014-39		1/4-20X3/8 SLOT IND HEX WASHER HD GREEN
49	24-0019-05		WASHER, LOCK, 1/4", EXTERNAL TOOTH
50	24-0017-46		WASHER, FLAT SAE STL-ZP
51	24-10907		STATIC ARESSTOR
52	12-12071-01		COME ALONG ASSEMBLY LH 204
	12-12071-02		COME ALONG ASSEMBLY LH 313
53	12-12070-01		COME ALONG ASSEMBLY RH 204
	12-12070-02		COME ALONG ASSEMBLY RH 313
54	22-3590-04		SCREW - SOCKET FL HD W-VIBR 7/16-14 X 1
55	21-8396		LIMIT ARM ASSY, STD STILES-1100 1175 WS
56	24-0017-02		WASHER, 7/16 ID X 1 OD X .083 THK
57	14-8447		LIMIT ARM SUPPORT
58	24-4941-02		SCREW, PH FL HD 1/4-20 X 1" TRILOBE FORM
59	12-12958-01		KIT, ICU D/RECESSED HANDLE
	12-12958-02		KIT, ICU D/RECESSED HANDLE

NOTE: Machining may vary depending on the age of the product. Have the original order number available when contacting NABCO if possible.

**GT2100T Telescopic, Trackless,
 Full Open
 Trail Door Left Hand**



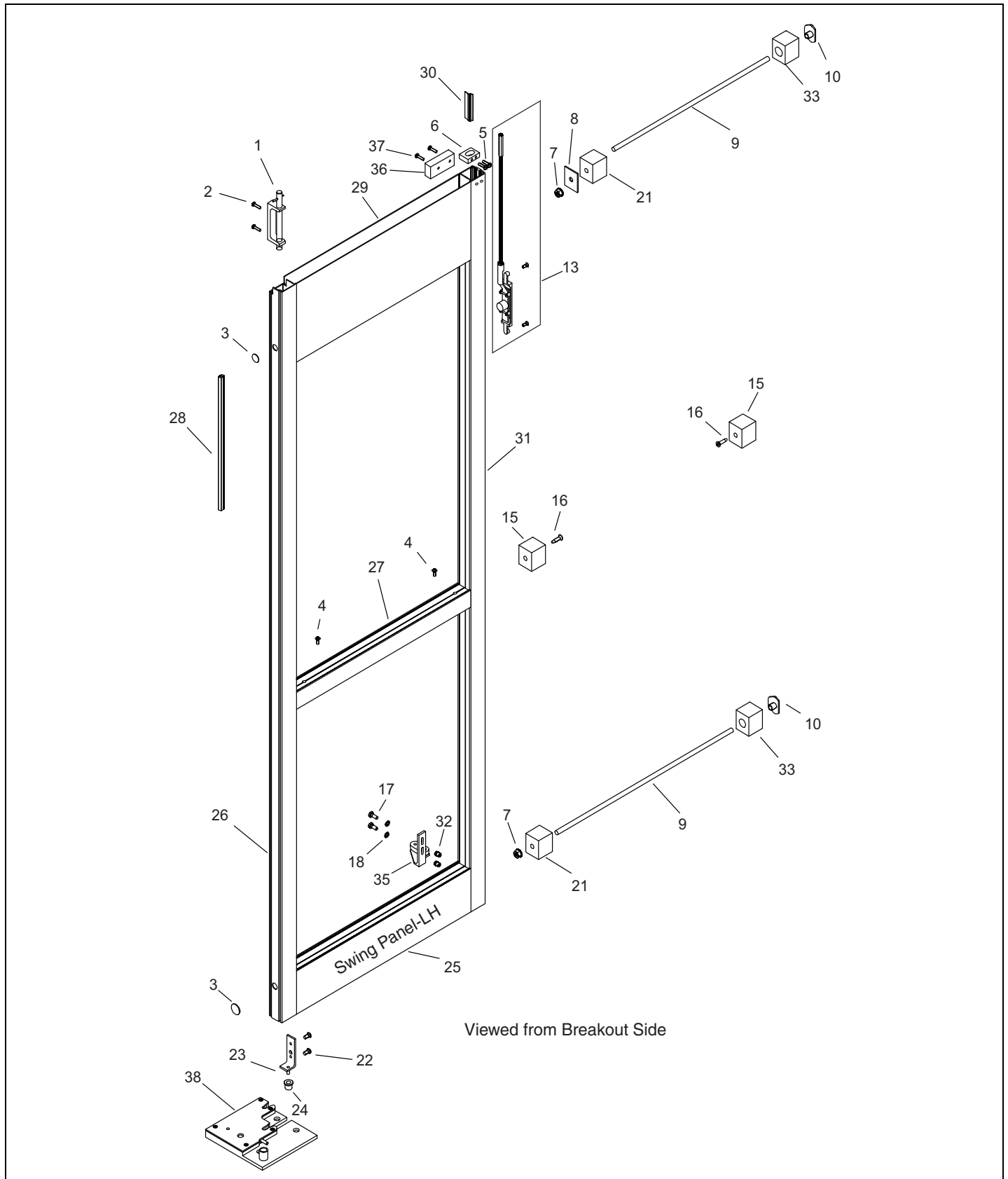


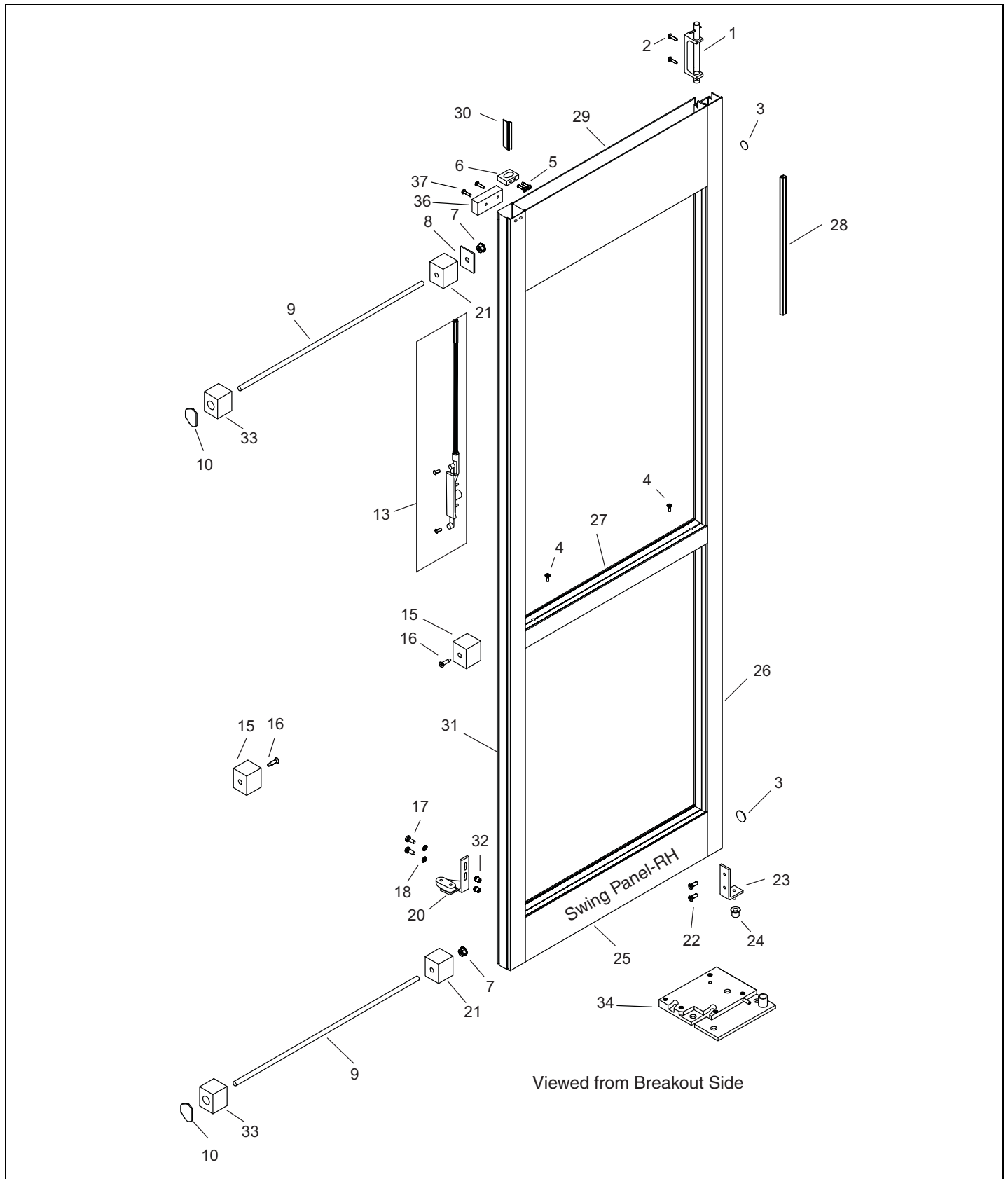
Item	Part	Select Finish	Description
1	24-0011-96		SCREW - PHILLIPS HD MACH 1/4-20 X 3/4
2	12-10722		BOTTOM PIVOT BRACKET ASSY
3	14-9511-04		PLUG, DOME
4	24-0021-21		NUT, WHIZLOCK, 3/8-16, ZINC
5	14-9225		BACKING PLATE, TIE ROD - DOOR ASSEMBLY
6	14-0984-01		CLIP, 0.386" HOLE
7	14-3624		THREADED ROD, 3/8"-16 - ZINC PLATED
8	24-9503		CLIP, MUNTIN BAR - RAIL .500 HOLE
9	14-9279		OFFSET TEE NUT, 3/8"-16
10	24-9502		CLIP, MUNTIN BAR - RAIL .261 HOLE
11	24-4941-02		SCREW, PH FL HD 1/4-20 X 1" TRILOBE FORM
12	24-0094-01		SCREW, PHLLPS PAN HD MACH #10 X 1/2" A
13	24-0014-02		SCREW - HEX HD CAP 1/4-20 X 3/4
14	24-0019-05		WASHER, LOCK, 1/4", EXTERNAL TOOTH
15	24-9504		CLIP, MUNTIN BAR - RAIL .386 HOLE
16	24-10907		STATIC ARESSTOR
17	14-8640-04		RIVNUT, 1/4-20 AVK #AKS4-420-260
18	Bottom Rail		Contact NABCO (see note below)
19	Strike Stile		Contact NABCO (see note below)
20	Pivot Stile		Contact NABCO (see note below)
21	Muntin Bar		Contact NABCO (see note below)
22	Top Rail		Contact NABCO (see note below)
23	24-0016-33		SCREW, SET 5/16-24 X 1/2, CUP POINT
24	Pivot Assembly		Contact NABCO (see note below)
25	24-0014-12		SCREW, HEX HD CAP 1/4-20 X 1 3/4"
26	24-0017-04		WASHER, 1/4 ID X 9/16 OD X .049 THK, STL
27	24-0019-05		WASHER, LOCK, 1/4", EXTERNAL TOOTH
28	24-0011-70		SCREW, PH HD MACH 1/4-20 X 7/16 UND ZP
30	21-3468		PANIC CATCH RELEASE ASSY
31	24-0010-16		SCREW - SOCKET HEAD CAP 1/4-20 X 1 1/4
32	24-0016-30		SCREW, SET 5/16-18 X 1 1/4, CUP POINT
33	24-9483		MOUNTING BLOCK, PANIC CATCH - MACHINED
34	24-0011-71		SCREW, SOCKET HD MACHINE 1/4-20 X 1 1/4"
35	24-0014-23		SCREW, HEX HD CAP 1/4-20 X 1/2"
36	24-0014-39		1/4-20X3/8 SLOT IND HEX WASHER HD GREEN
37	24-0019-05		WASHER, LOCK, 1/4", EXTERNAL TOOTH
38	24-0017-46		WASHER, FLAT SAE STL-ZP
39	24-0011-53		SCREW - PHILLIPS HD MACH #10-32 X 1/2
40	14-10561-01		END CAP, PIVOT - TRAIL DOOR MILLED 204
	14-10561-02		END CAP, PIVOT - TRAIL DOOR 313
41	12-10027		ROLLER & HUB SUBASSY, TELESCOPING LEAD
42	Carrier		Contact NABCO (see note below)
43	Interface Leg		Contact NABCO (see note below)

NOTE: Machining may vary depending on the age of the product. Have the original order number available when contacting NABCO if possible.

Item	Part	Select Finish	Description
44	12-12410		GUIDE BLOCK SUB ASSY NARROW STILE - RH
	12-12412		GUIDE BLOCK SUB ASSY MEDIUM STILE - RH
45	14-12065		STRIKE MOUNTING BLOCK - COME ALONG
46	14-12066-01		STRIKE BRACKET - COME ALONG BRACKET 204
	14-12066-02		STRIKE BRACKET - COME ALONG BRACKET 313
47	22-3590-04		SCREW - SOCKET FL HD W-VIBR 7/16-14 X 1
48	21-8396		LIMIT ARM ASSY, STD STILES-1100 1175 WS
49	22-4412		HEADER LOCK ROD ASSY LESS SCREW PACK
50	12-12409		GUIDE BLOCK SUB ASSY NARROW STILE - LH
	12-12411		GUIDE BLOCK SUB ASSY MEDIUM STILE - LH
51	14-8447		LIMIT ARM SUPPORT
52	24-4941-02		SCREW, PH FL HD 1/4-20 X 1" TRILOBE FORM

NOTE: Machining may vary depending on the age of the product. Have the original order number available when contacting NABCO if possible.





Item	Part	Select Finish	Description
1	21-9507		ASM, TOP PIVOT, 1175 SWING PANEL
2	24-0011-104		SCREW - PH HD MACH #10-32X1/2 UND CUT BO
	24-0011-105		SCREW - PH HD MACH 10-32X1/2 UND CUT ZP
3	14-9511-04		PLUG, DOME
4	24-0094-01		SCREW, PHLLPS PAN HD MACH #10 X 1/2" A
5	24-4941-18		SCREW, PH PAN HD 10-32 X 1/2" TYPE F
6	24-10774		LOCK ROD GUIDE - PLASTIC LOCK ROD END
7	24-0021-21		NUT, WHIZLOCK, 3/8-16, ZINC
8	14-9225		BACKING PLATE, TIE ROD - DOOR ASSEMBLY
9	14-3624		THREADED ROD, 3/8"-16 - ZINC PLATED
10	14-9279		OFFSET TEE NUT, 3/8"-16
13	24-5505-01		FLUSH BOLT MACHINED
	24-5505-02		FLUSH BOLT MACHINED
15	24-9502		CLIP, MUNTIN BAR - RAIL .261 HOLE
16	24-4941-02		SCREW, PH FL HD 1/4-20 X 1" TRILOBE FORM
17	24-0014-02		SCREW - HEX HD CAP 1/4-20 X 3/4
18	24-0019-05		WASHER, LOCK, 1/4", EXTERNAL TOOTH
20	12-12410		GUIDE BLOCK SUB ASSY NARROW STILE - RH
	12-12412		GUIDE BLOCK SUB ASSY MEDIUM STILE - RH
21	24-9504		CLIP, MUNTIN BAR - RAIL .386 HOLE
22	24-0011-70		SCREW, PH HD MACH 1/4-20 X 7/16 UND ZP
23	11-9509-01		BOTTOM PIVOT SWING PANEL ASSY - LH
	11-9509-02		BOTTOM PIVOT SWING PANEL ASSY - RH
24	24-2458		BOTTOM PIVOT BUSHING, SWING PANEL
25	Bottom Rail		Contact NABCO (see note below)
26	Pivot Stile		Contact NABCO (see note below)
27	Muntin Bar		Contact NABCO (see note below)
28	14-8632		WEATHERING TRI POLY BLACK BULB T5BL
29	Top Rail		Contact NABCO (see note below)
30	14-5592-01		WEATHER STRIP -9/16 INCH FIN V65GR GRAY
	14-5592-02		WEATHER STRIP - ICU 9/16 INCH
31	Strike Stile		Contact NABCO (see note below)
32	14-8640-04		RIVNUT, 1/4-20 AVK #AKS4-420-260
33	24-9503		CLIP, MUNTIN BAR - RAIL .500 HOLE
34	12-10844		PIVOT ASSEMBLY TELESCOPIC RH
35	12-12409		GUIDE BLOCK SUB ASSY NARROW STILE - LH
	12-12411		GUIDE BLOCK SUB ASSY MEDIUM STILE - LH
36	14-10766		SPACER 2100 TELESCOPIC
37	24-0011-131		#10-32 X 1/2 PHIL HEAD TYPE 23 U.C. ZINC
38	12-10845		PIVOT ASSEMBLY TELESCOPIC LH

NOTE: Machining may vary depending on the age of the product. Have the original order number available when contacting NABCO if possible.