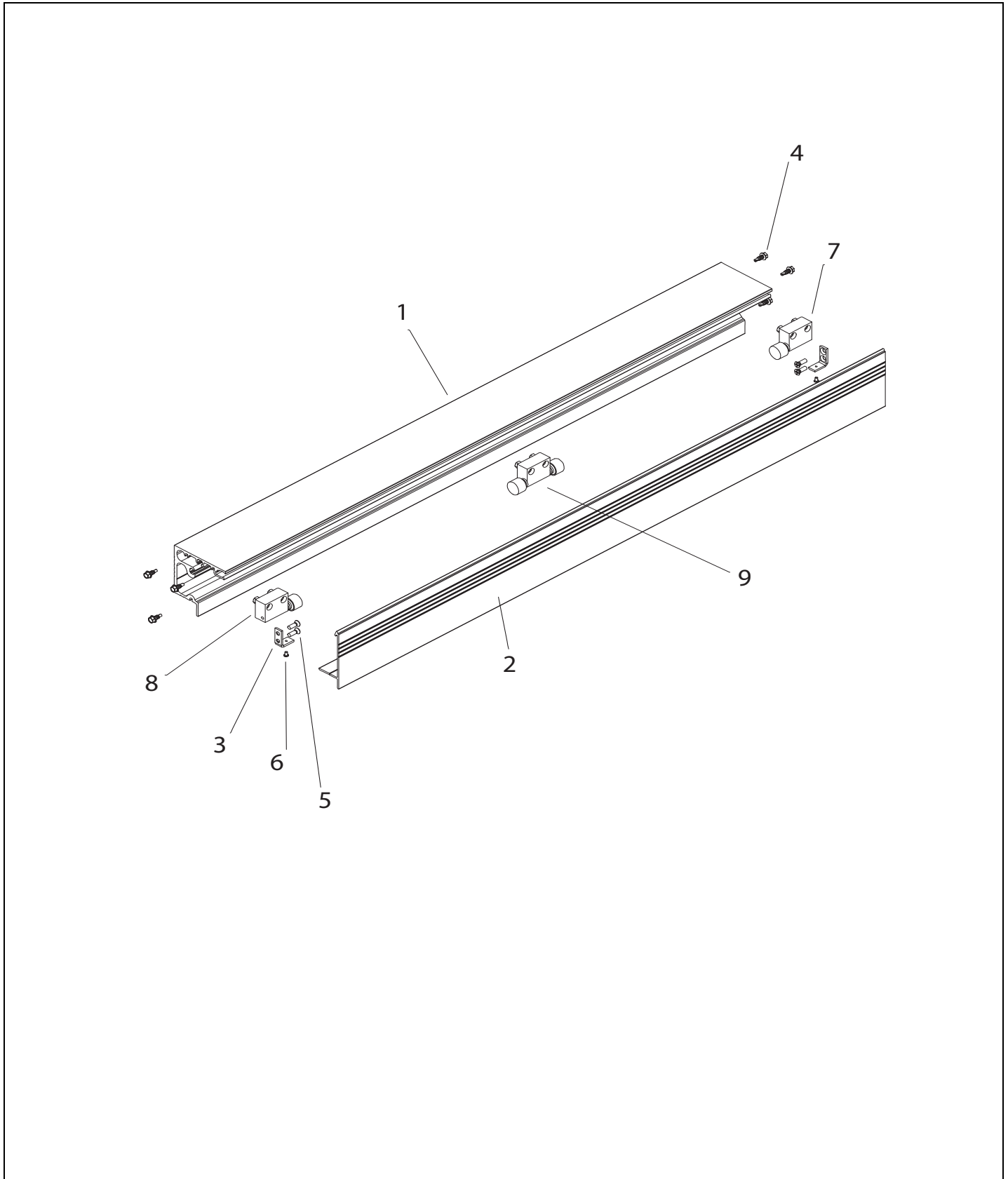


Section F3
GT2100, Trackless Full Open

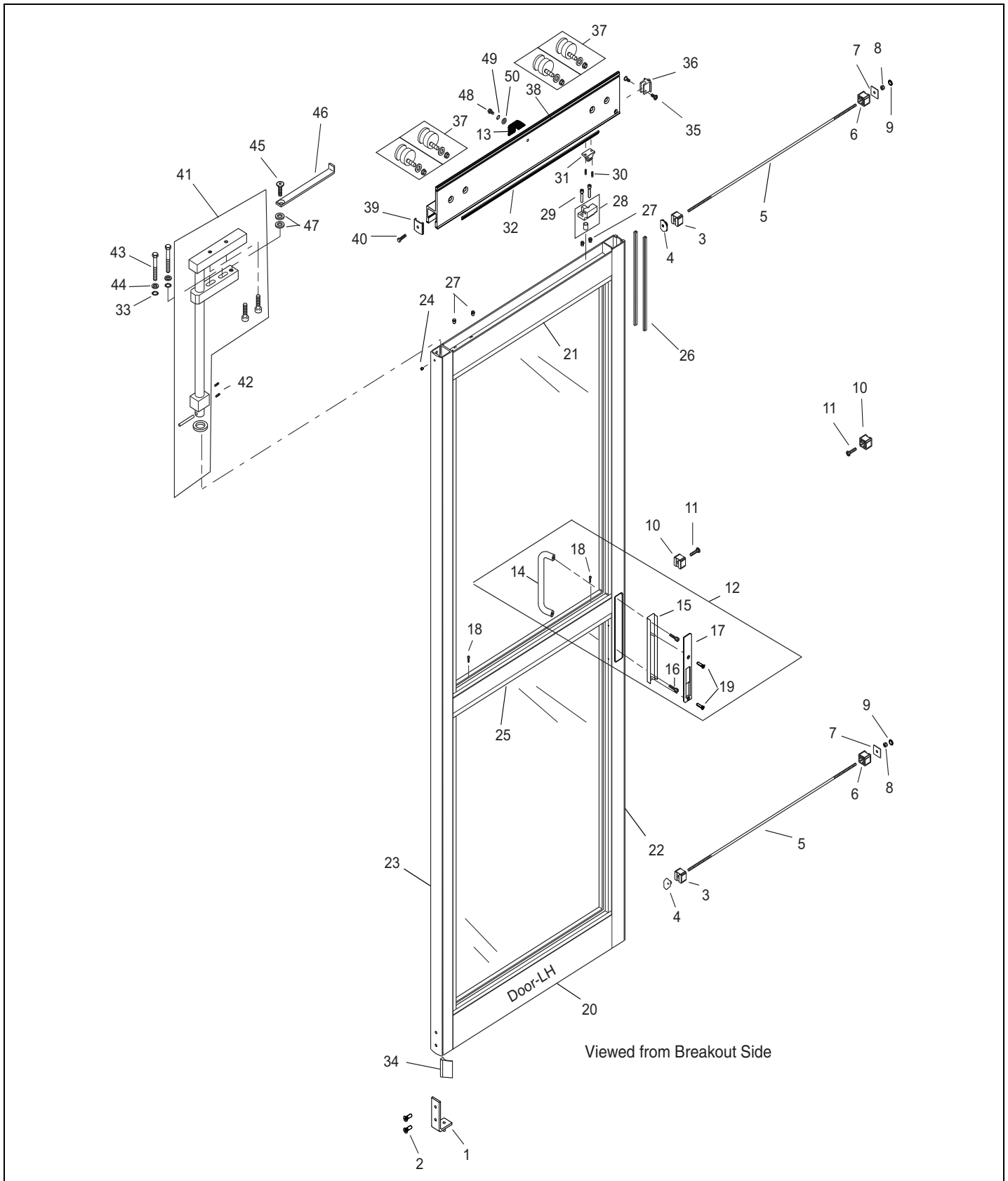
| | |
|--|-----|
| Header | 3 |
| Header Bill of Materials | 4 |
| Door Left Hand | 5 |
| Door Right Hand | 6 |
| Door Bill of Material | 7-8 |
| Swing Panel Left Hand | 9 |
| Swing Panel Right Hand | 10 |
| Swing Panel Bill of Material | 11 |

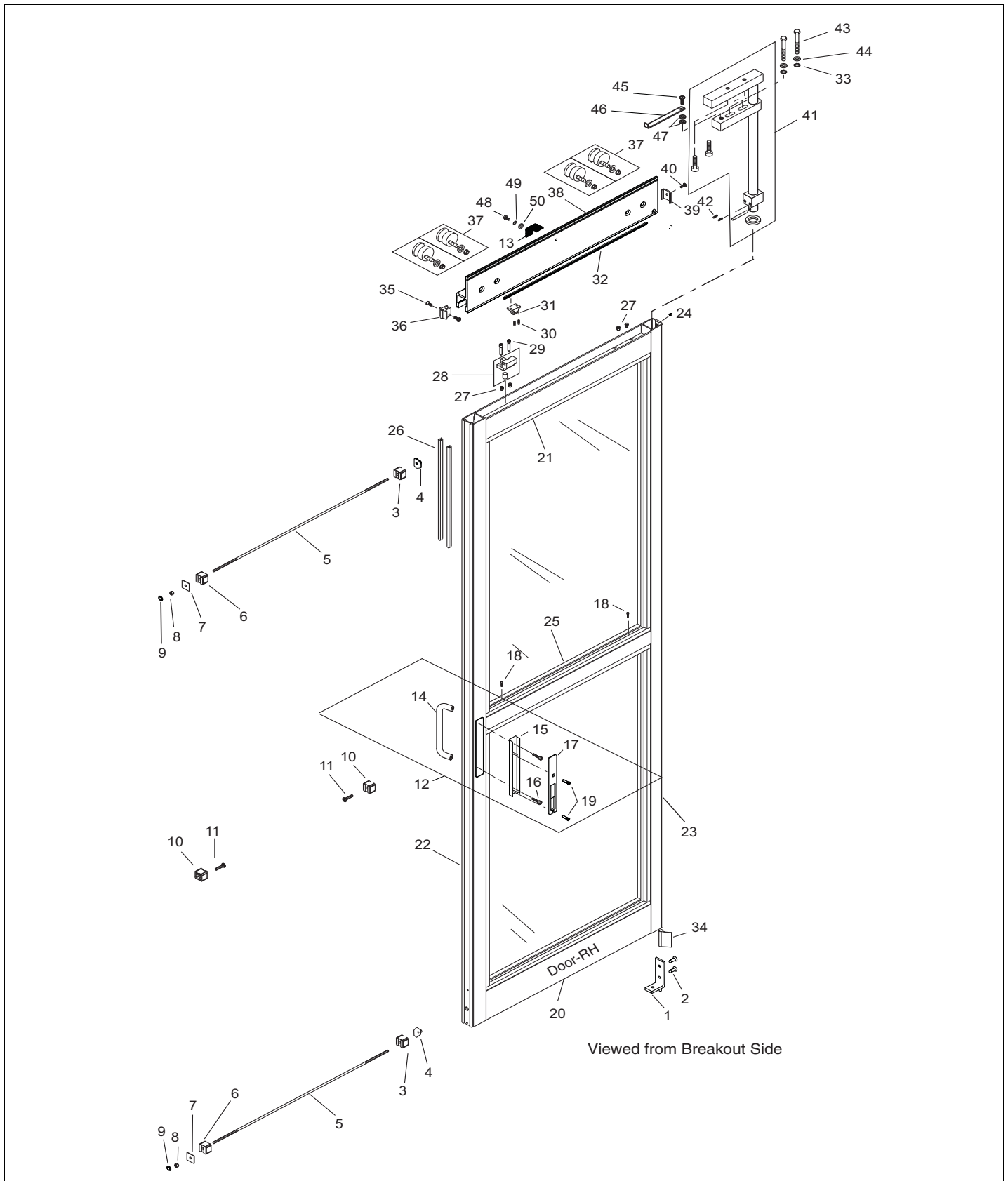
This Page Intentionally Left Blank



| Item | Part | Select Finish | Description |
|------|------------|---------------|---|
| 1 | Header | | Contact NABCO (see note below) |
| 2 | Cover | | Contact NABCO (see note below) |
| 3 | 14-10727 | | CLIP, COVER |
| 4 | 24-0014-30 | | SCREW - HEX HD CAP #14 X 3/4 SELF DR TP |
| 5 | 24-0011-70 | | SCREW, PH HD MACH 1/4-20 X 7/16 UND ZP |
| 6 | 24-0015-41 | | SCREW, SLOTTED HD MACH 1/4-20 X 3/8" |
| 7 | 12-10829 | | END STOP ASSEMBLY - LH |
| 8 | 12-10714 | | END STOP ASSEMBLY - RH |
| 9 | 12-11107 | | CENTER STOP W/SCREWS & NUTS |

NOTE: Machining may vary depending on the age of the product. Have the original order number available when contacting NABCO if possible.



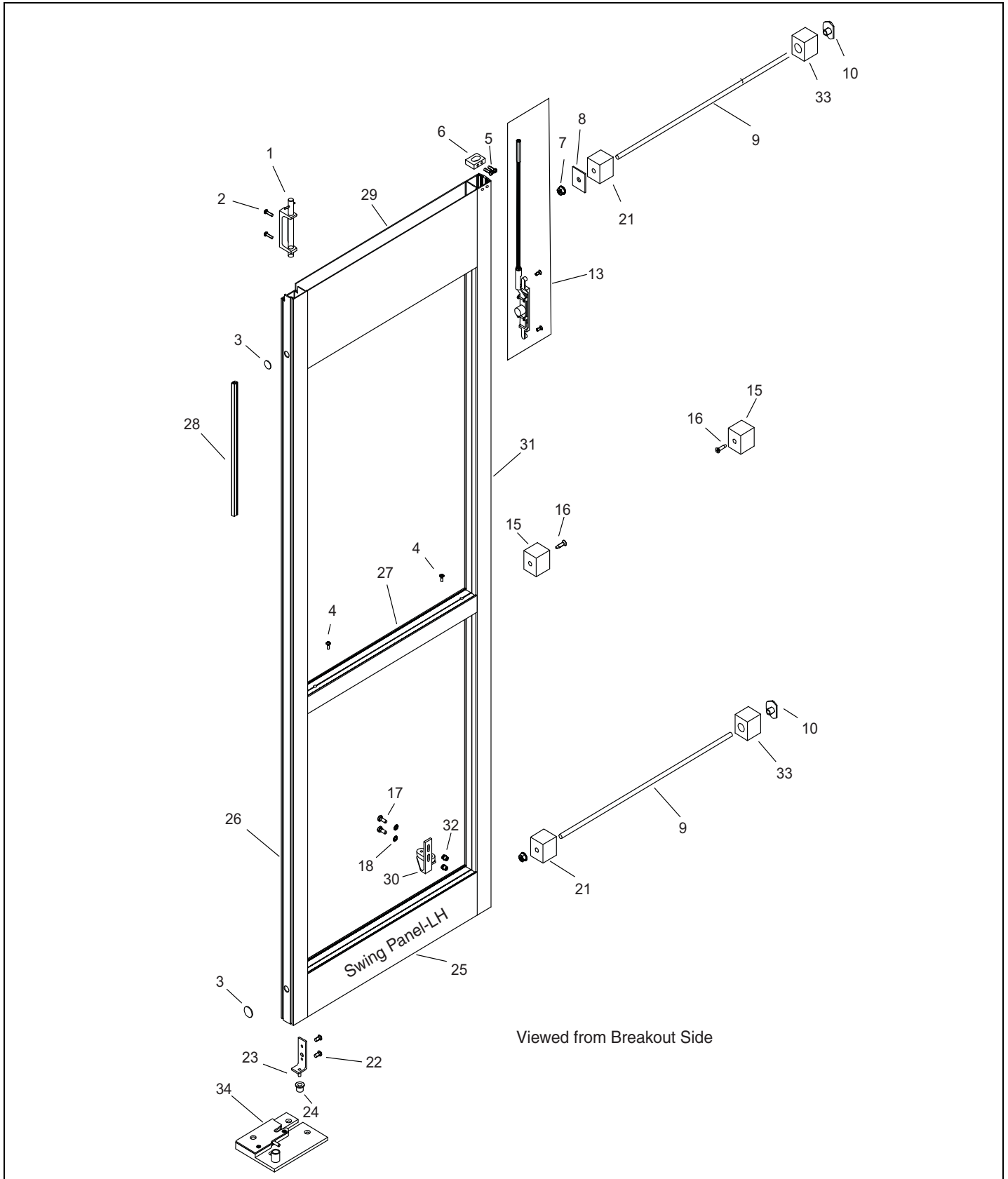


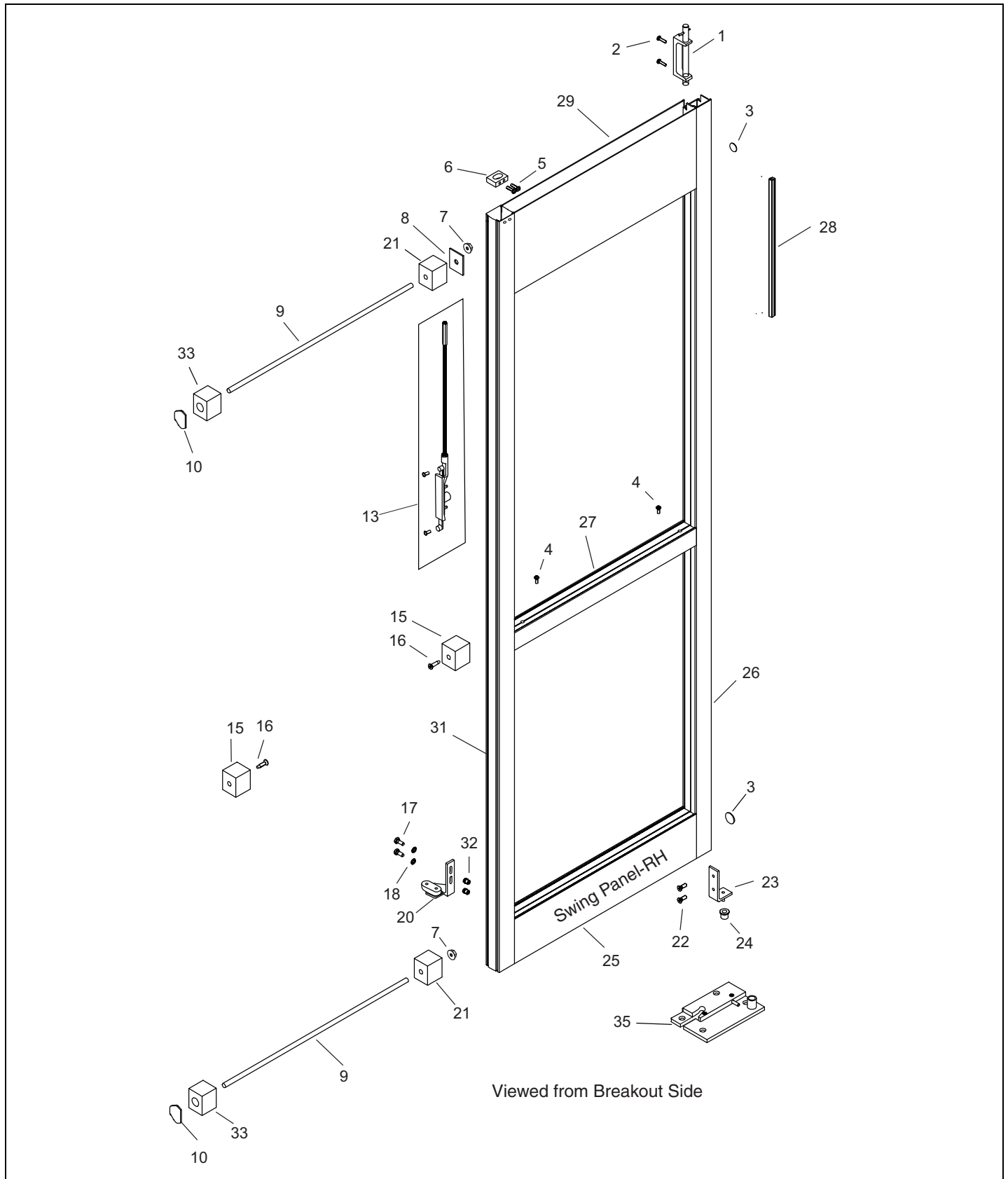
| Item | Part | Select Finish | Description |
|------|---------------|---------------|--|
| 1 | 12-10722 | | BOTTOM PIVOT BRACKET ASSY |
| 2 | 24-0011-96 | | SCREW - PHILLIPS HD MACH 1/4-20 X 3/4 |
| 3 | 24-9503 | | CLIP, MUNTIN BAR - RAIL .500 HOLE |
| 4 | 14-9279 | | OFFSET TEE NUT, 3/8"-16 |
| 5 | 14-3624 | | THREADED ROD, 3/8"-16 - ZINC PLATED |
| 6 | 24-9504 | | CLIP, MUNTIN BAR - RAIL .386 HOLE |
| 7 | 14-9225 | | BACKING PLATE, TIE ROD - DOOR ASSEMBLY |
| 8 | 24-0021-21 | | NUT, WHIZLOCK, 3/8-16, ZINC |
| 9 | 14-9511-04 | | PLUG, DOME |
| 10 | 24-9502 | | CLIP, MUNTIN BAR - RAIL .261 HOLE |
| 11 | 24-4941-02 | | SCREW, PH FL HD 1/4-20 X 1" TRILOBE FORM |
| 12 | 12-12958-01 | | KIT, ICU D/RECESSED HANDLE |
| | 12-12958-02 | | KIT, ICU D/RECESSED HANDLE |
| 13 | 24-10907 | | STATIC ARESSTOR |
| 14 | 24-3729-01 | | HANDLE, D, DOOR |
| | 24-3729-02 | | HANDLE, D, DOOR |
| 15 | 24-12956 | | BRACKET, ICU D/RECESSED HANDLE |
| 16 | 24-0010-05 | | SCREW - SOCKET HEAD CAP 1/4-20 X 1/2 |
| 17 | 24-3438-01 | | DOOR PULL, RECESSED, ICU |
| | 24-3438-02 | | DOOR PULL, RECESSED, ICU |
| 18 | 24-0094-01 | | SCREW, PHLLPS PAN HD MACH #10 X 1/2" A |
| 19 | 24-0011-138 | | SCREW, #8-32 X 1.00, FH, PHL, CLR ZINC |
| | 24-0011-139 | | SCREW, #8-32 X 1.00, FH, PHL, BLK ZINC |
| 20 | Bottom Rail | | Contact NABCO (see note below) |
| 21 | Top Rail | | Contact NABCO (see note below) |
| 22 | Strike Stile | | Contact NABCO (see note below) |
| 23 | Pivot Stile | | Contact NABCO (see note below) |
| 24 | 24-0016-33 | | SCREW, SET 5/16-24 X 1/2, CUP POINT |
| 25 | Muntin Bar | | Contact NABCO (see note below) |
| 26 | 14-8632 | | WEATHERING TRI POLY BLACK BULB T5BL |
| 27 | 14-8640-04 | | RIVNUT, 1/4-20 AVK #AKS4-420-260 |
| 28 | 21-3468 | | PANIC CATCH RELEASE ASSY |
| 29 | 24-0010-16 | | SCREW - SOCKET HEAD CAP 1/4-20 X 1 1/4 |
| 30 | 24-0016-30 | | SCREW, SET 5/16-18 X 1 1/4, CUP POINT |
| 31 | 24-9483 | | MOUNTING BLOCK, PANIC CATCH - MACHINED |
| 32 | Interface Leg | | Contact NABCO (see note below) |
| 33 | 24-0019-05 | | WASHER, LOCK, 1/4", EXTERNAL TOOTH |
| 34 | 14-5592-01 | | WEATHER STRIP -9/16 INCH FIN V65GR GRAY |
| | 14-5592-02 | | WEATHER STRIP - ICU 9/16 INCH |
| 35 | 24-0011-105 | | SCREW - PH HD MACH 10-32X1/2 UND CUT ZP |
| 36 | 12-10882-01 | | CAP, END STRIKE SIDE ASSY. BULB |
| | 12-10882-02 | | CAP, END CARRIER STRIKE SIDE ASSB 313 |
| 37 | 12-10027 | | ROLLER & HUB SUBASSY, TELESCOPING LEAD |

NOTE: Machining may vary depending on the age of the product. Have the original order number available when contacting NABCO if possible.

| Item | Part | Select Finish | Description |
|------|----------------|---------------|--|
| 38 | Carrier | | Contact NABCO (see note below) |
| 39 | 14-10561-01 | | END CAP, PIVOT - TRAIL DOOR MILLED 204 |
| | 14-10561-02 | | END CAP, PIVOT - TRAIL DOOR 313 |
| 40 | 24-0011-53 | | SCREW - PHILLIPS HD MACH #10-32 X 1/2 |
| 41 | Pivot Assembly | | Contact NABCO (see note below) |
| 42 | 24-0011-70 | | SCREW, PH HD MACH 1/4-20 X 7/16 UND ZP |
| 43 | 24-0014-12 | | SCREW, HEX HD CAP 1/4-20 X 1 3/4" |
| 44 | 24-0017-04 | | WASHER, 1/4 ID X 9/16 OD X .049 THK, STL |
| 45 | 22-3590-04 | | SCREW - SOCKET FL HD W-VIBR 7/16-14 X 1 |
| 46 | 21-8396 | | LIMIT ARM ASSY, STD STILES-1100 1175 WS |
| 47 | 24-0017-02 | | WASHER, 7/16 ID X 1 OD X .083 THK |
| 48 | 24-0014-39 | | 1/4-20X3/8 SLOT IND HEX WASHER HD GREEN |
| 49 | 24-0019-05 | | WASHER, LOCK, 1/4", EXTERNAL TOOTH |
| 50 | 24-0017-46 | | WASHER, FLAT SAE STL-ZP |

NOTE: Machining may vary depending on the age of the product. Have the original order number available when contacting NABCO if possible.





| Item | Part | Select Finish | Description |
|------|--------------|---------------|--|
| 1 | 21-9507 | | ASM, TOP PIVOT, 1175 SWING PANEL |
| 2 | 24-0011-104 | | SCREW - PH HD MACH #10-32X1/2 UND CUT BO |
| | 24-0011-105 | | SCREW - PH HD MACH 10-32X1/2 UND CUT ZP |
| 3 | 14-9511-04 | | PLUG, DOME |
| 4 | 24-0094-01 | | SCREW, PHLLPS PAN HD MACH #10 X 1/2" A |
| 5 | 24-4941-18 | | SCREW, PH PAN HD 10-32 X 1/2" TYPE F |
| 6 | 24-10774 | | LOCK ROD GUIDE - PLASTIC LOCK ROD END |
| 7 | 24-0021-21 | | NUT, WHIZLOCK, 3/8-16, ZINC |
| 8 | 14-9225 | | BACKING PLATE, TIE ROD - DOOR ASSEMBLY |
| 9 | 14-3624 | | THREADED ROD, 3/8"-16 - ZINC PLATED |
| 10 | 14-9279 | | OFFSET TEE NUT, 3/8"-16 |
| 13 | 24-5505-01 | | FLUSH BOLT MACHINED |
| | 24-5505-02 | | FLUSH BOLT MACHINED |
| 15 | 24-9502 | | CLIP, MUNTIN BAR - RAIL .261 HOLE |
| 16 | 24-4941-02 | | SCREW, PH FL HD 1/4-20 X 1" TRILOBE FORM |
| 17 | 24-0014-02 | | SCREW - HEX HD CAP 1/4-20 X 3/4 |
| 18 | 24-0019-05 | | WASHER, LOCK, 1/4", EXTERNAL TOOTH |
| 20 | 12-12412 | | GUIDE BLOCK SUB ASSY MEDIUM STILE - RH |
| | 12-12410 | | GUIDE BLOCK SUB ASSY NARROW STILE - RH |
| 21 | 24-9504 | | CLIP, MUNTIN BAR - RAIL .386 HOLE |
| 22 | 24-0011-70 | | SCREW, PH HD MACH 1/4-20 X 7/16 UND ZP |
| 23 | 11-9509-01 | | BOTTOM PIVOT SWING PANEL ASSY - LH |
| | 11-9509-02 | | BOTTOM PIVOT SWING PANEL ASSY - RH |
| 24 | 24-2458 | | BOTTOM PIVOT BUSHING, SWING PANEL |
| 25 | Bottom Rail | | Contact NABCO (see note below) |
| 26 | Pivot Stile | | Contact NABCO (see note below) |
| 27 | Muntin Bar | | Contact NABCO (see note below) |
| 28 | 14-8632 | | WEATHERING TRI POLY BLACK BULB T5BL |
| 29 | Top Rail | | Contact NABCO (see note below) |
| 30 | 12-12409 | | GUIDE BLOCK SUB ASSY NARROW STILE - LH |
| | 12-12411 | | GUIDE BLOCK SUB ASSY MEDIUM STILE - LH |
| 31 | Strike Stile | | Contact NABCO (see note below) |
| 32 | 14-8640-04 | | RIVNUT, 1/4-20 AVK #AKS4-420-260 |
| 33 | 24-9503 | | CLIP, MUNTIN BAR - RAIL .500 HOLE |
| 34 | 12-10797 | | PIVOT ASSY 2 PANEL LH |
| 35 | 12-10796 | | PIVOT ASSY 2 PANEL RH |

NOTE: Machining may vary depending on the age of the product. Have the original order number available when contacting NABCO if possible.