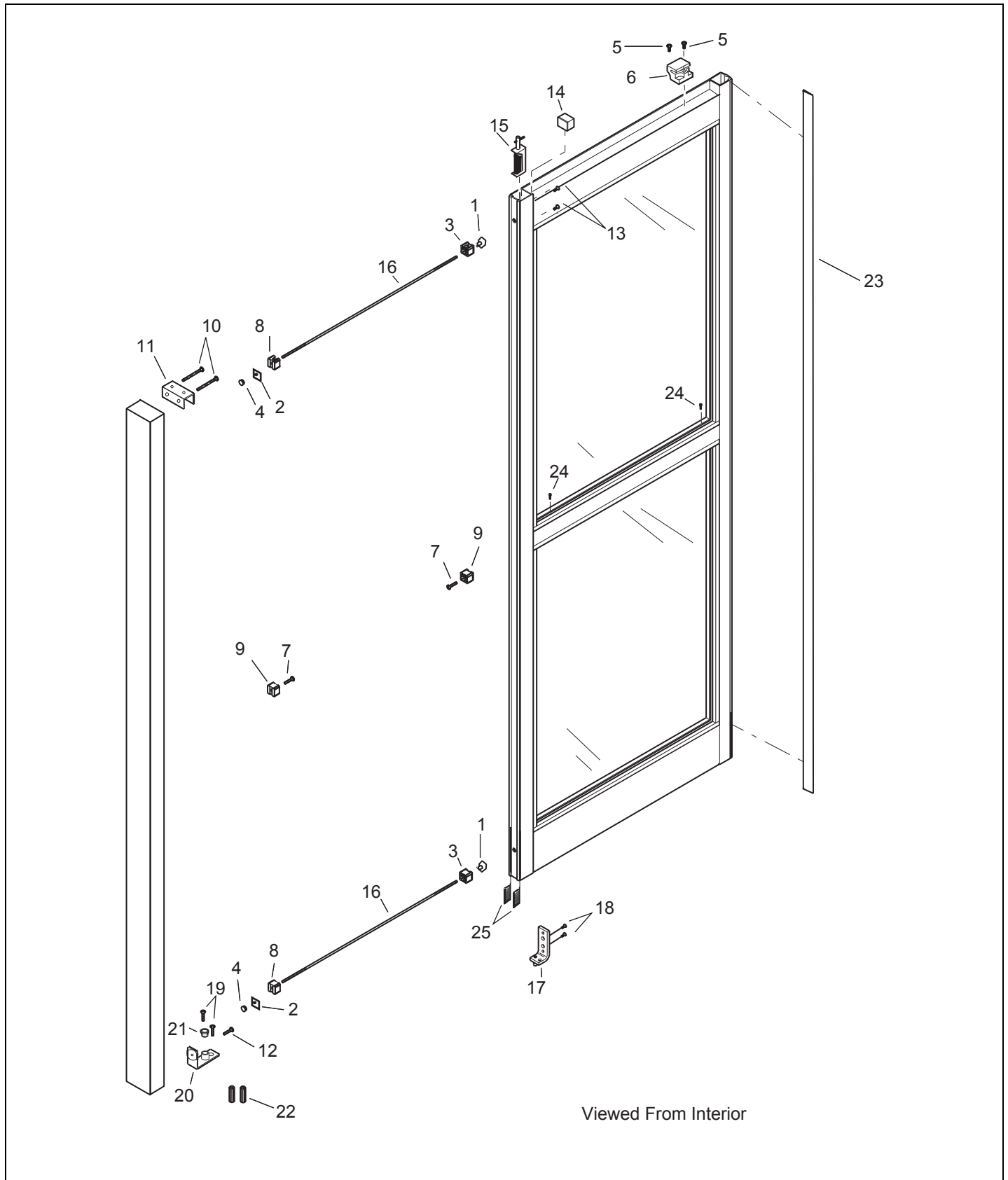


Section F2
GT 1250 Full Open with Floor Track

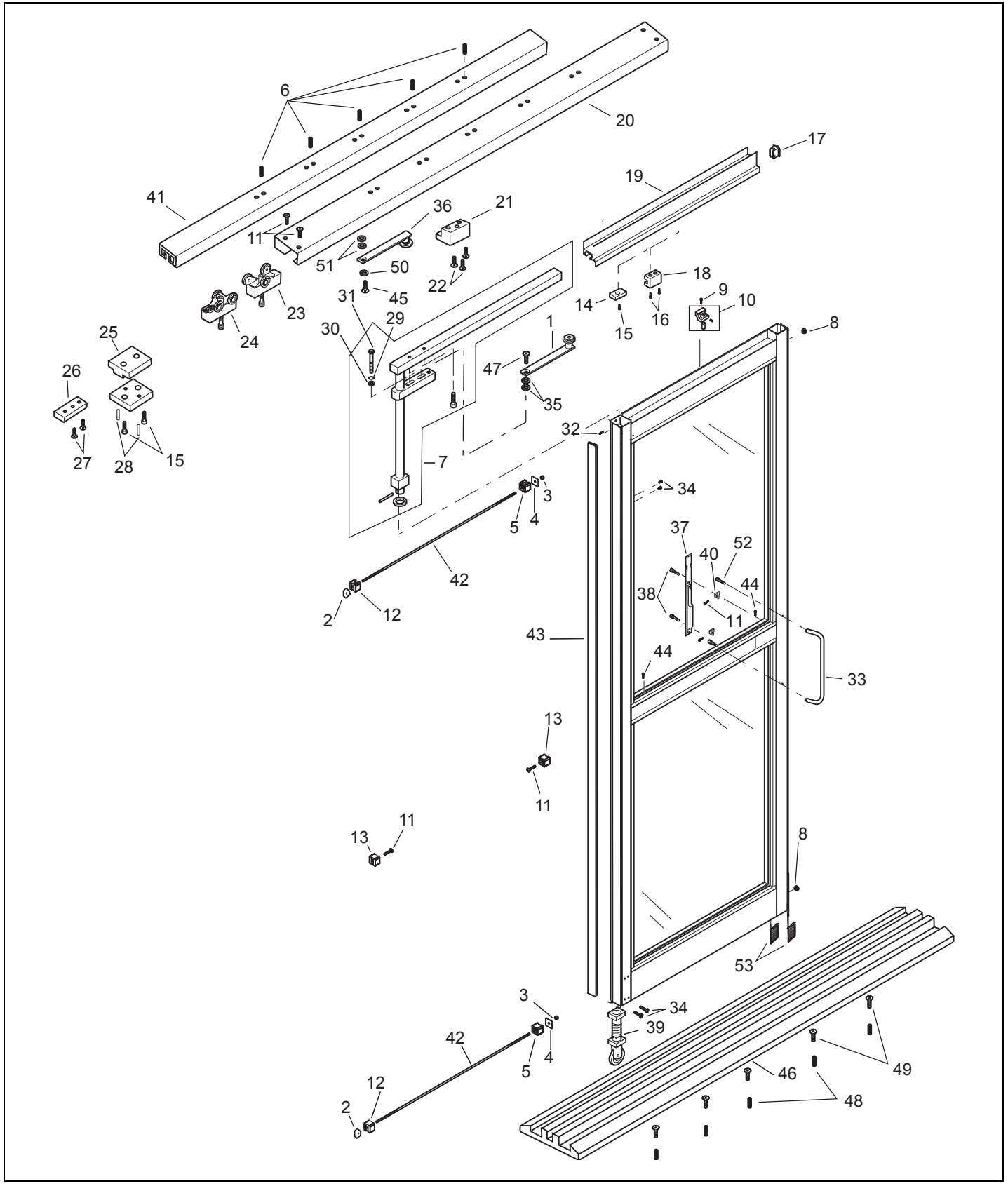
Swing Panel	3
Swing Panel	4
Sliding Panel	5
Sliding Panel	6
Sliding Panel	7

This Page Intentionally Left Blank





Item	Part	Select Finish	Description
1	14-9279		Offset Tee Nut, 3/8"-16
2	14-9225		Backing Plate, Tie Rod - Door Assembly
3	24-9504		Clip, Muntin Bar - Rail .386 Hole
4	14-9511-04		Plug, Dome
5	24-0010-16		Screw, Socket Head Cap 1/4-20 x 1 1/4" Zinc
6	21-3468		Panic Catch Release Assembly
7	24-4941-02		Screw, Phillips Flat Head 1/4-20 x 1" Self Tap
8	24-9503		Clip, Muntin Bar - Rail .500 Hole
9	24-9502		Clip, Muntin Bar - Rail .261 Hole
10	24-0094-06		Screw, Phillips Pan Head Machine 10 x 1 3/4" B
11	14-4095		Clip, Transom - Non Flush Glazing
12	24-0011-13		Screw, Phillips Head Machine 1/4-20 x 3/4" Zinc
13	24-0011-70		Screw, Ph Head Machine 1/4-20 x 7/16 Undercut Zinc
14	12-8259		Stop Block Assembly, Swing Panel
15	21-8088-01		Top Pivot Assembly, Swing Panels RH, ICU
16	14-3624		Threaded Rod, 3/8"-16 - Zinc Plated
17	11-9509-01		Bottom Pivot Swing Panel Assembly - LH
18	24-0013-05		Screw, Phillips Head Machine 1/4-20 x 1/2" Truss Zinc
19	24-0031-04		Screw, Slotted Flat Head, #14 x 1 1/2" Type A
20	22-4750		Floor Pivot Sub-Assembly - GT1100
21	24-2458		Bottom Pivot Bushing, Swing Panel
22	14-1018		Anchor, Fluted Plastic - #14" x 1", Blue
23	14-3933-01		Weathering Gray
24	24-0094-01		Screw, Phillips Pan Head Machine #10 x 1/2" AB
25	14-2279-05		Pile Weathering, Black - Trailing Edge, Long





Item	Part	Select Finish	Description
1	21-3801		Llimit Arm Assembly, ICU
2	14-9279		Offset Tee Nut, 3/8"-16
3	24-0021-21		Hex Locknut Flange "Whiz" 3/8"-16
4	14-9225		Backing Plate, Tie Rod - Door Assembly
5	24-9504		Clip, Muntin Bar - Rail .386 Hole
6	24-0020-04		Pin, Roll 1/8 Dia x 3/8 Long
7	21-5351		Carrier Bar Weldment Assembly
8	14-9511-04		Plug, Dome
9	24-0010-16		Screw, Socket Head Cap 1/4-20 x 1 1/4" Zinc
10	21-3468		Panic Catch Release Assembly
11	24-4941-02		Screw, Phillips Flat Head 1/4-20 x 1" Self Tap
12	24-9503		Clip, Muntin Bar - Rail .500 Hole
13	24-9502		Clip, Muntin Bar - Rail .261 Hole
14	12-8367		Llimit Arm Bumper Sub Assembly, ICU
15	24-0011-09		Screw, Phillips Head Machine 1/4-20 x 1" Zinc
16	24-0010-04		Screw, Socket Head Cap #10-24 x 1 1/4" Zinc
17	12-8368-0X		Carrier End Cap Sub Assembly, ICU 204
18	24-2447		Panic Catch Release, Dress Channel
19	24-5144-0X	*	Door Stop Cover Piece
20	24-5124-0X	*	Horizontal Header Tube - R.H. 204
	24-5123-0X	*	Horizontal Header Tube - L.H. 204
21	14-3689		Panic Catch, Header ICU
22	24-0010-29		Screw, Socket Head Cap #10-24 x 3/4" Zinc
23	11-3829		Roller Assembly, ICU
24	11-3981		Static Roller Assembly, ICU
25	14-3965		Stop Shoe Bumper, ICU
26	14-3694		Top Pivot Block, Swing Panel ICU
27	24-0011-13		Screw, Phillips Head Machine 1/4-20 x 3/4" Zinc
28	24-0020-13		Pin, Roll 3/16 Dia x 1/2 Long
29	24-0017-04		Washer, 1/4 ID x 9/16 OD x .049 Thick, Steel
30	24-0019-05		Washer, Star 1/4" External Tooth
31	24-0014-12		Screw, Hex Head Cap 1/4-20 x 1 3/4" Grade 5 Zinc
32	24-0016-33		Screw, Set 5/16-24 x 1/2, Cup Point
33	21-3754-0X		Handle Door Assembly, ICU 204
34	24-0011-70		Screw, Ph Head Machine 1/4-20 x 7/16 Undercut Zinc
35	24-0017-02		Washer, 7/16 ID x 1 OD x .083 Thick
36	21-8100		Bottom Pivot Assembly 1100
37	24-3438-0X	*	Door Pull, ICU 204
38	24-0011-87		Screw, Phillips Head Machine #8-32 x 3/4"
39	12-8427		Replaced By -01 For 204 And -02 For 313
40	14-3968		Handle Mount Bracket, ICU
41	24-5159-0X		Roller Track 204
42	14-3624		Threaded Rod, 3/8"-16 - Zinc Plated
43	14-3933-01		Weathering Gray



Item	Part	Select Finish	Description
44	24-0094-01		Screw, Phillips Pan Head Machine #10 x 1/2" AB
45	22-3590-06		Screw, Phillips Flat Head With Vibration 1/4-20 x 1" Und
46	24-8179-0X		Floor Track - 3" Single - 44"
47	22-3590-04		Screw, Socket Flat Head With Vibration 7/16-14 x 1" Zir
48	14-6894		Screw Anchors
49	24-0031-07		Screw, Slotted Flat Head, #10 x 1 1/2" Type A
50	14-8658		Spacer, Limit Arm
51	24-0017-14		Washer, 5/16 ID x 3/4 OD x .062 Thick
52	24-0010-05		Screw, Socket Head Cap 1/4-20 x 1/2" Zinc
53	14-2279-05		Pile Weathering, Black - Trailing Edge, Long

This Page Intentionally Left Blank