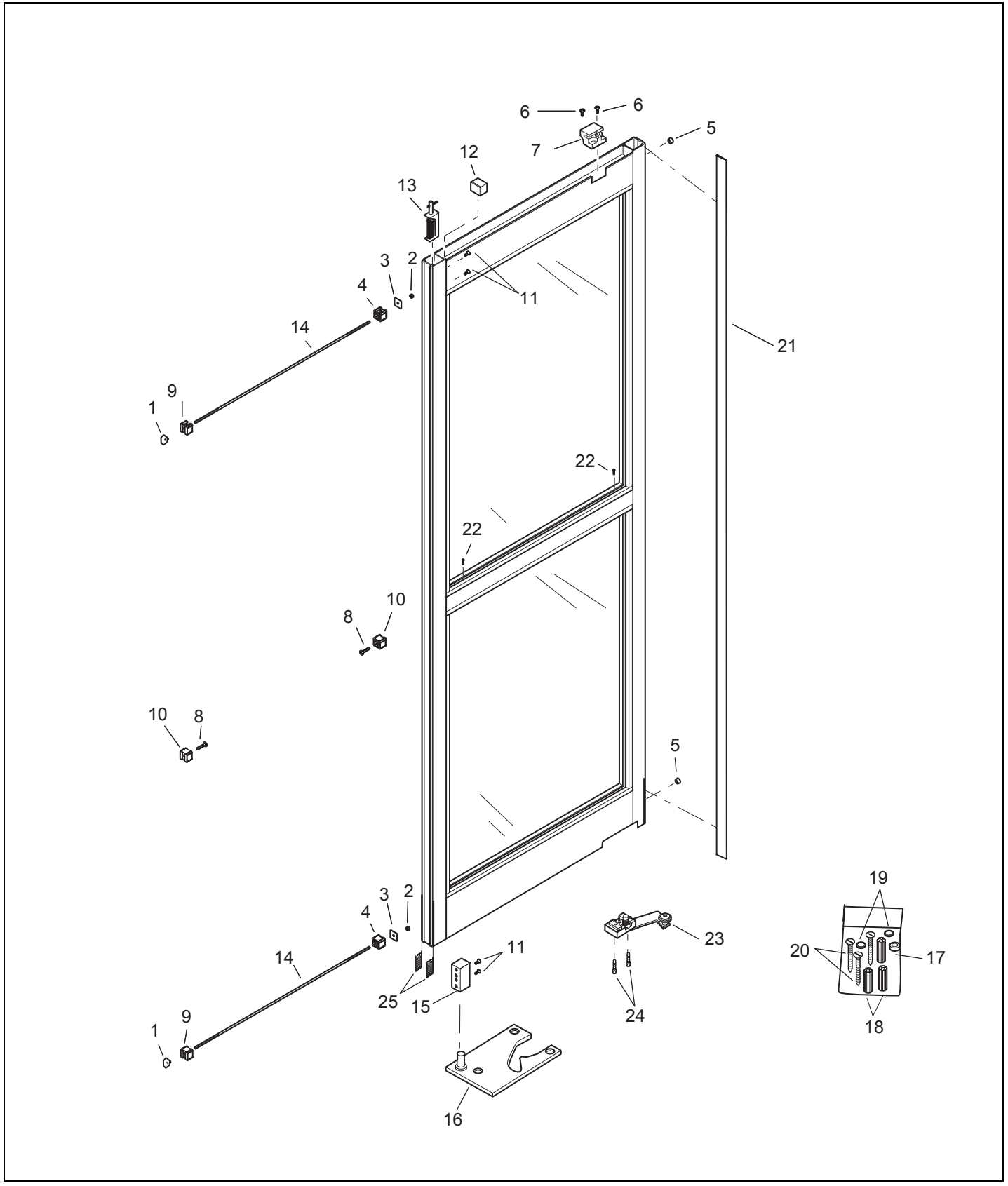


Section F1
GT 1200 Full Open Trackless

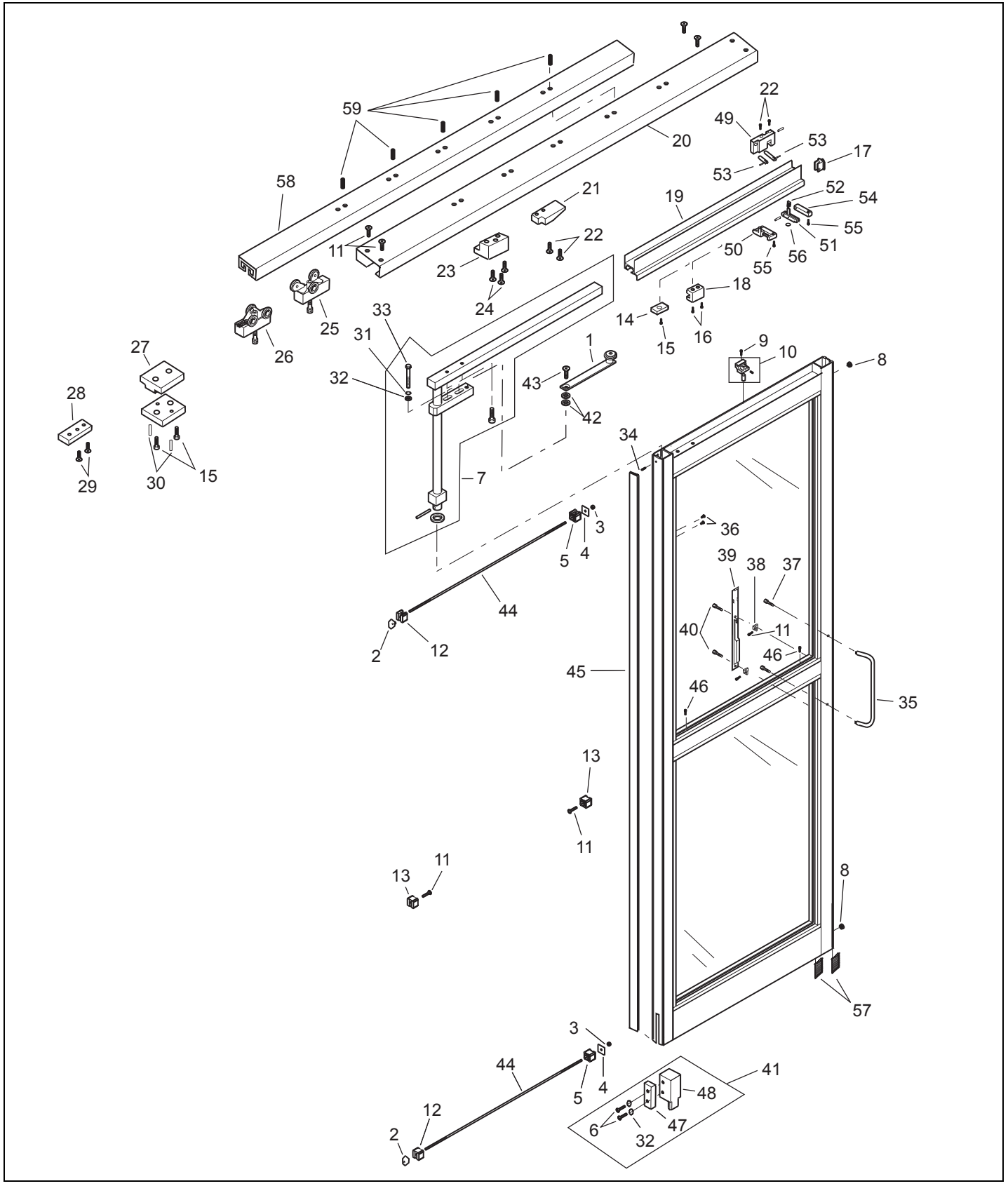
Swing Panel Left	3
Swing Panel Left	4
Sliding Panel Left	5
Sliding Panel Left	6
Sliding Panel Left	7

This Page Intentionally Left Blank





Item	Part	Select Finish	Description
1	14-9279		Offset Tee Nut, 3/8"-16
2	24-0021-21		Hex Locknut Flange "Whiz" 3/8"-16
3	14-9225		Backing Plate, Tie Rod - Door Assembly
4	24-9504		Clip, Muntin Bar - Rail .386 Hole
5	14-9511-04		Plug, Dome
6	24-0010-16		Screw, Socket Head Cap 1/4-20 X 1 1/4" Zinc
7	21-3468		Panic Catch Release Assembly
8	24-4941-02		Screw, Ph Fl Hd 1/4-20 X 1" Self Tap
9	24-9503		Clip, Muntin Bar - Rail .500 Hole
10	24-9502		Clip, Muntin Bar - Rail .261 Hole
11	24-0011-70		Screw, Ph Hd Mach 1/4-20 X 7/16 Undercut Zinc
12	12-8259		Stop Block Assembly, Swing Panel
13	21-8088-01		Top Pivot Assembly, Swing Panels RH, ICU
14	14-3624		Threaded Rod, 3/8"-16 - Zinc Plated
15	24-3784		Bottom Pivot Block, ICU
16	21-5402-02		Base Pivot Weldment LH, ICU
17	14-3718		Bottom Pivot Bushing - Swing Panel
18	14-1018		Anchor, Fluted Plastic - #14" X 1", Blue
19	24-0017-27		Washer 7/16 ID x 3/4 OD x 1/32 Thick
20	24-0031-04		Screw, Sltd Flat Hd, #14 X 1 1/2" Type A
21	14-3933-01		Weathering Gray
22	24-0094-01		Screw, Phillips Pan Hd Mach #10 X 1/2" Ab
23	21-3772		Roller Bottom Guide Assembly RH
	21-3771		Roller Bottom Guide Assembly LH
24	24-0010-08		Screw, Socket Head Cap #10-32 X 1 1/2" Zinc
25	14-2279-05		Pile Weathering, Blk - Trailing Edge, Long





Item	Part	Select Finish	Description
1	21-3801		Limit Arm Assembly, ICU
2	14-9279		Offset Tee Nut, 3/8"-16
3	24-0021-21		Hex Locknut Flange "Whiz" 3/8"-16
4	14-9225		Backing Plate, Tie Rod - Door Assembly
5	24-9504		Clip, Muntin Bar - Rail .386 Hole
6	24-0014-02		Screw, Hex Hd Cap 1/4-20 X 3/4" Zinc
7	21-5351		Carrier Bar Weldment Assembly
8	14-9511-04		Plug, Dome
9	24-0010-16		Screw, Socket Head Cap 1/4-20 X 1 1/4" Zinc
10	21-3468		Panic Catch Release Assembly
11	24-4941-02		Screw, Ph Fl Hd 1/4-20 X 1" Self Tap
12	24-9503		Clip, Muntin Bar - Rail .500 Hole
13	24-9502		Clip, Muntin Bar - Rail .261 Hole
14	12-8367		Limit Arm Bumper Sub Assembly, ICU
15	24-0011-09		Screw, Phillips Hd Mach 1/4-20 X 1" Zinc
16	24-0010-04		Screw, Socket Head Cap #10-24 X 1 1/4" Zinc
17	12-8368-0X		Carrier End Cap Sub Assembly, ICU 204
18	24-2447		Panic Catch Release, Dress Channel
19	24-3710-0X	*	Slave Door Dress Channel - R.H. 204
	24-3709-0X	*	Dress Channel - L.H. 204
20	24-3691-0X	*	Horizontal Header Tube - R.H. 204
	24-3690-0X	*	Horizontal Header Tube - L.H. 204
21	14-3938-02		Panic Preventer Ramp Release RH, ICU
22	24-0010-34		Screw, Socket Head Cap #8-32 X 1" Zinc
23	14-3689		Panic Catch, Header ICU
24	24-0010-29		Screw, Socket Head Cap #10-24 X 3/4" Zinc
25	11-3829		Roller Assembly, ICU
26	11-3981		Static Roller Assembly, ICU
27	14-3965		Stop Shoe Bumper, ICU
28	14-3694		Top Pivot Block, Swing Panel ICU
29	24-0011-13		Screw, Phillips Hd Mach 1/4-20 X 3/4" Zinc
30	24-0020-13		Pin, Roll 3/16 Dia X 1/2 Long
31	24-0017-04		Washer, 1/4 ID X 9/16 OD X .049 Thick, Stl
32	24-0019-05		Washer, Star 1/4" External Tooth
33	24-0014-12		Screw, Hex Hd Cap 1/4-20 X 1 3/4" Grade 5 Zinc
34	24-0016-33		Screw, Set 5/16-24 X 1/2, Cup Point
35	21-3754-0X		Handle Door Assembly, ICU 204
36	24-0011-70		Screw, Ph Hd Mach 1/4-20 X 7/16 Undercut Zinc
37	24-0010-05		Screw, Socket Head Cap 1/4-20 X 1/2" Zinc
38	14-3968		Handle Mount Bracket, ICU
39	24-3438-0X	*	Door Pull, ICU 204
40	24-0011-87		Screw, Phillips Hd Mach #8-32 X 3/4"
41	21-5397-02		Bottom Pivot Block Assembly LH, ICU
42	24-0017-02		Washer, 7/16 ID X 1 OD X .083 Thick
43	22-3590-04		Screw, Socket Fl Hd W/Vibr 7/16-14 X 1" Zinc
44	14-3624		Threaded Rod, 3/8"-16 - Zinc Plated



Item	Part	Select Finish	Description
45	14-3933-01		Weathering Gray
46	24-0094-01		Screw, Phillips Pan Hd Mach #10 X 1/2" Ab
47	14-9468		Block, Pivot - Bottom
48	14-9469		Block, Pivot - Bottom, NH
49	22-3948		Carrier Block Sub Assembly, GT1200 RH
	22-3949		Carrier Block Sub Assembly, GT1200 LH
50	22-3951		Slide Bse Carrier Lck Sub Assembly, GT1200 LH
	22-3952		Slide Bse Carrier Lck Sub Assembly, GT1200 RH
51	22-3950		Panic Preventer Sub Assembly, GT1200
52	14-3943		Panic Preventer Spring, ICU
53	24-0020-06		Pin, Roll 1/8 Dia X 1/2 Long
54	12-3956		Base Block W/Groove Pin, ICU
55	24-0011-86		Screw, Phillips Hd Mach #6-32 X 3/4" Zinc
56	24-0017-13		Washer, 3/8 ID X 11/16 OD X .031 Thick
57	14-2279-05		Pile Weathering, Blk - Trailing Edge, Long
58	24-3737-0X		Roller Track 204
59	24-0020-04		Pin, Roll 1/8 Dia X 3/8 Long

This Page Intentionally Left Blank