

Section D1
1400 AutoBifold

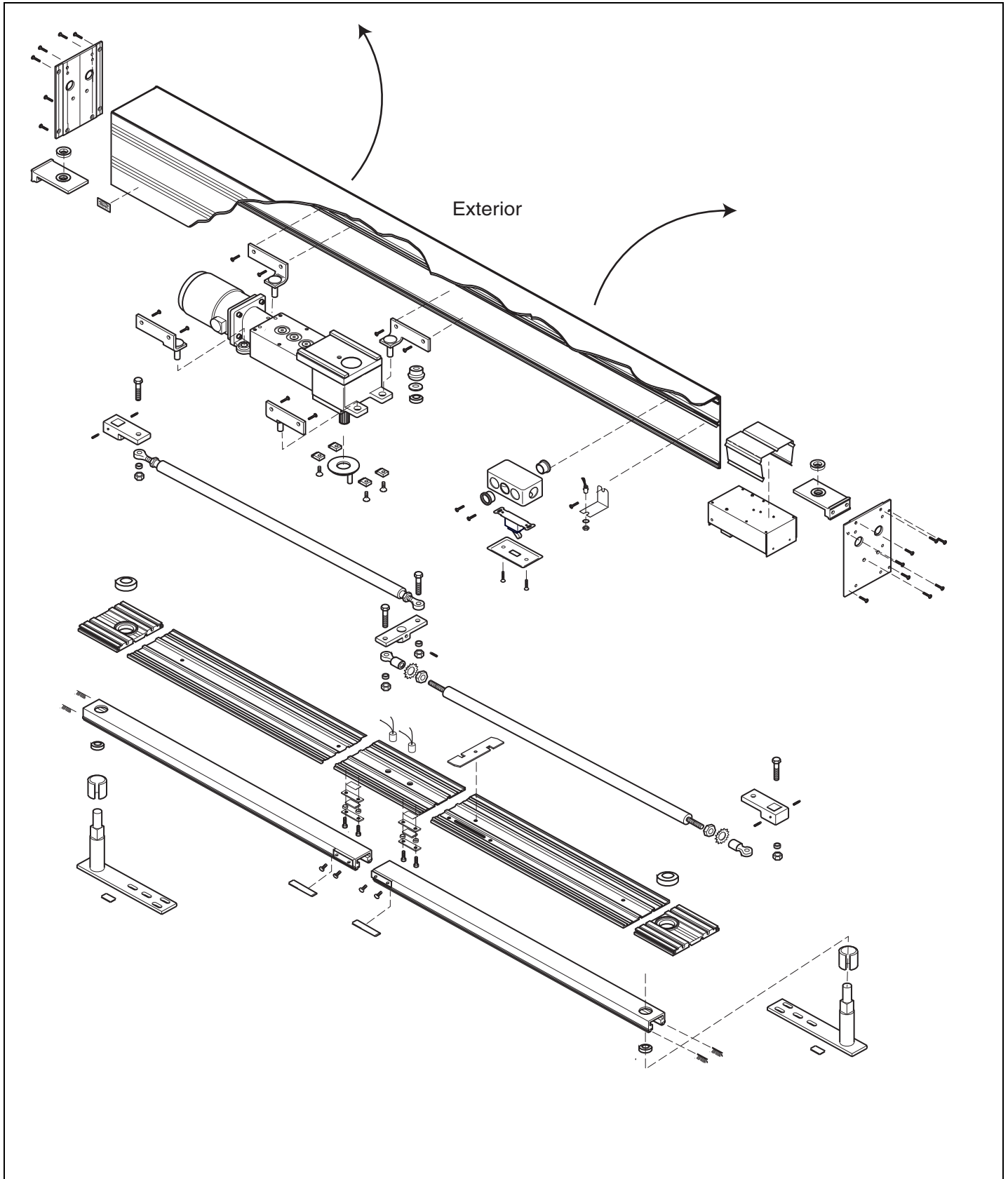
AutoBifold Header3-6

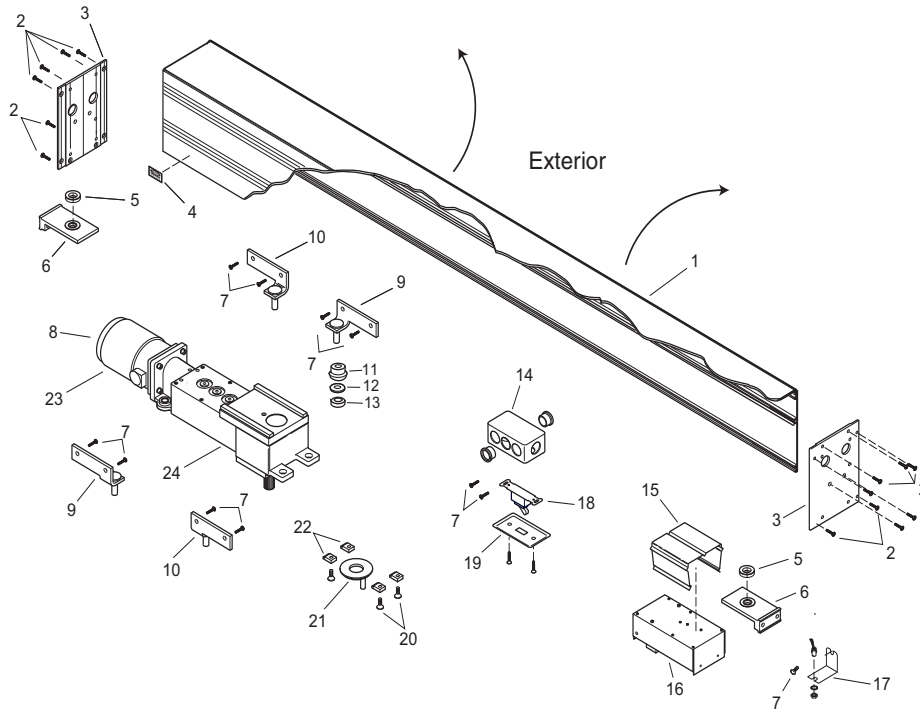
Magnetic Shear Lock 7

Automatic Header8-9

Automatic Door Panels10-14

This Page Intentionally Left Blank

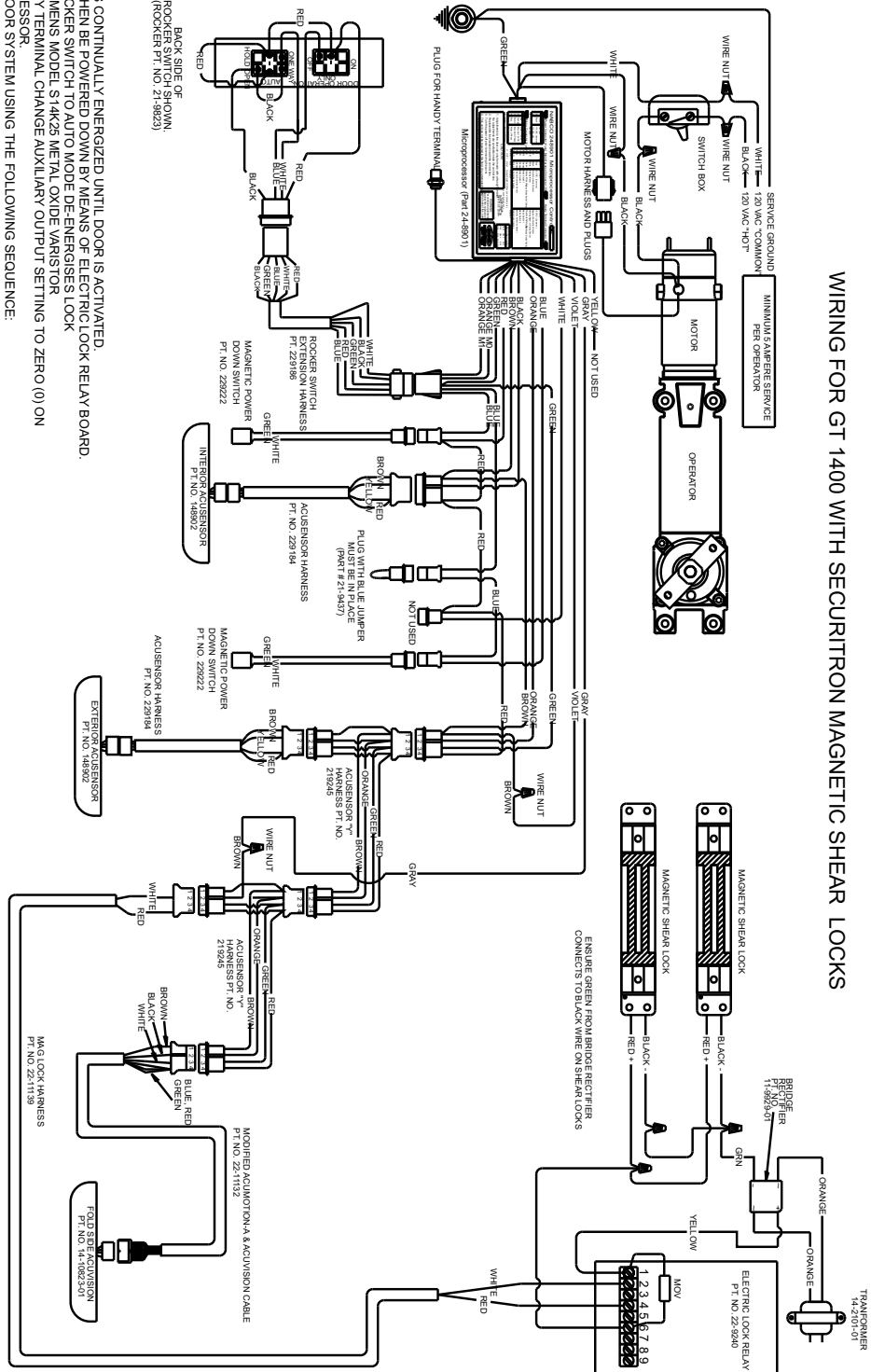




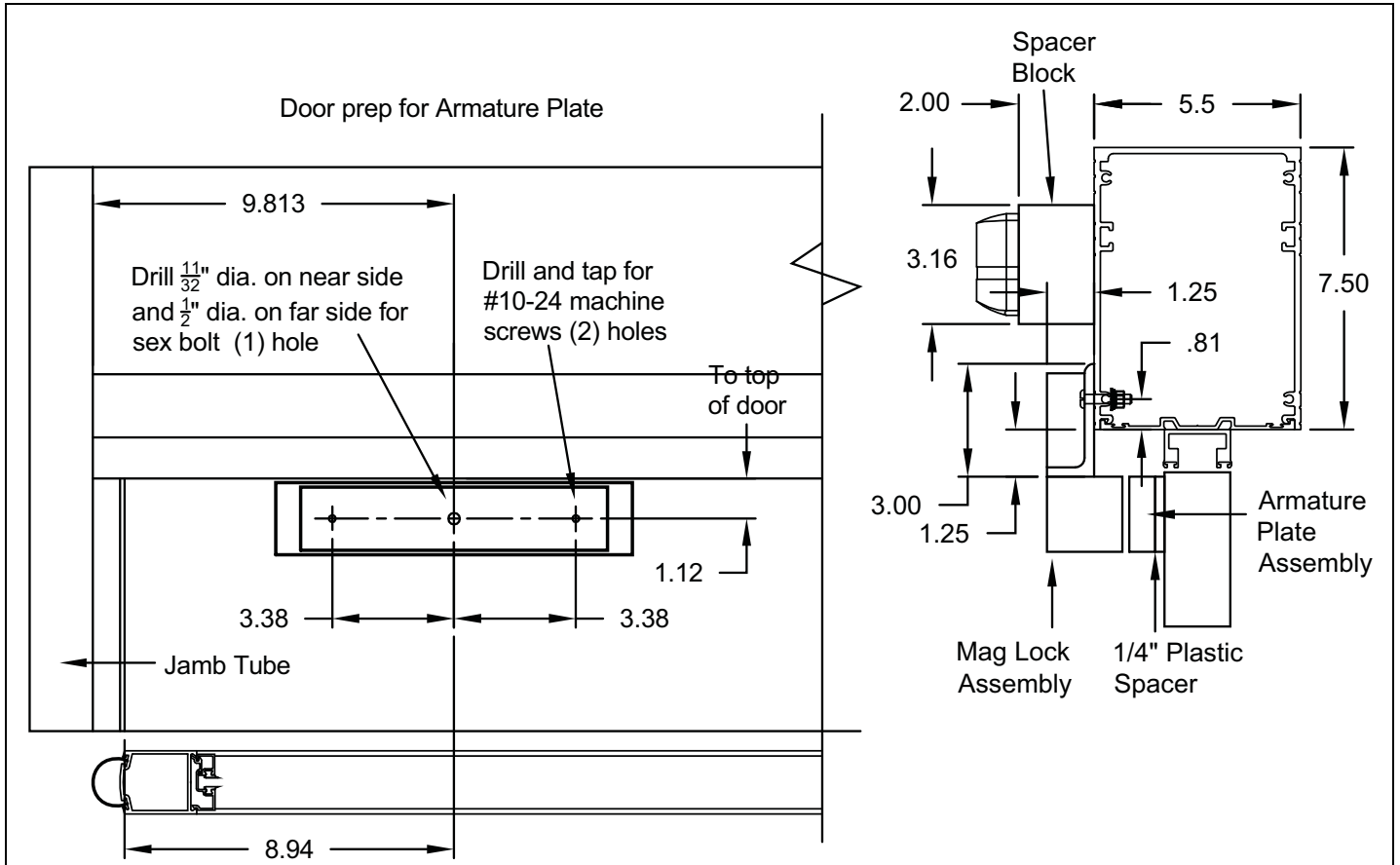
Magnetic Shear Lock Part Numbers
Single Bifold Door 14-10905-30
Bipart Bifold Door 14-10905-40

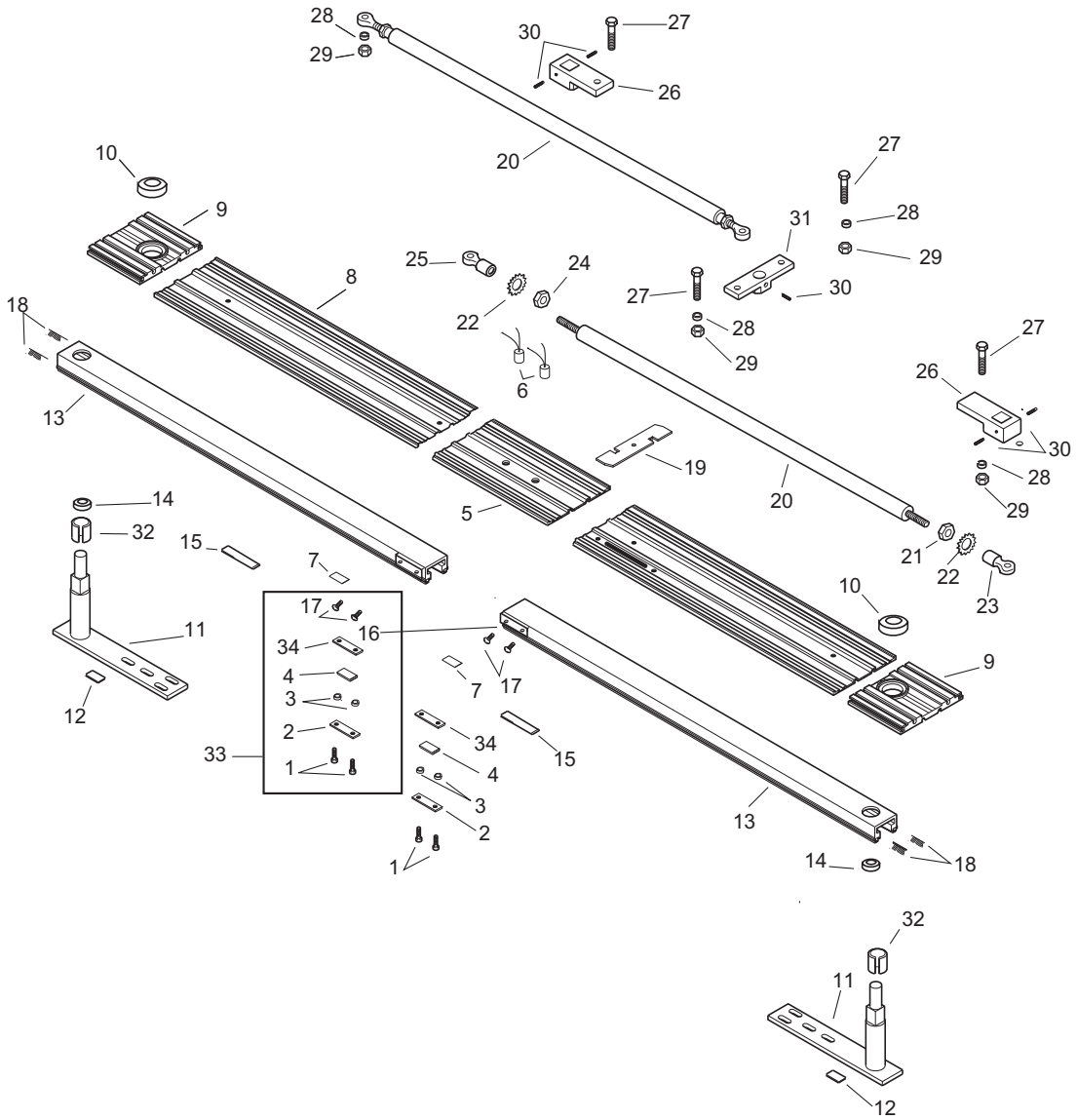
Item	Part	Select Finish	Description
1	24-8959-0X	★	HINGE TUBE, 6.58'
2	24-4941-02		SCREW, PH FL HD 1/4-20 X 1" TRILOBE FORM
3	24-8966-0X		END CAP, BIFOLD HEADER
4	14-9199		NAMEPLATE, ADHESIVE BACKED
5	24-0413		BEARING, BALL
6	14-8967		GUIDE SPINDLE SUB-ASSY, UPPER
7	24-0014-31		SCREW, SQUARE HD CAP 5/16-18 X 3/4"
8	41-8987-03		BI FOLD OPERATOR ASSY W/ENCODER LH
	41-8987-04		BI FOLD OPERATOR ASSY W/ENCODER RH
9	21-8920		OPERATOR MOUNT WELDMENT RH BIFOLD
10	21-8921		OPERATOR MOUNT BIFOLD, LH
11	24-0433		MOUNT, RUBBER
12	24-0017-02		WASHER, 7/16 ID X 1 OD X .083 THK
13	24-0021-15		HEX JAM NUT 3/8"-16
14	11-9253-01		JUNCTION BOX & BUSHING ASSY, SLIDER
15	14-8925		CLIP, MOUNTING - MICROPROCESSOR
16	24-8901		Use Dash Number for U04, U10 or U11
17	14-9038		BRACKET, CONNECTOR - HANDY TERMINAL
18	14-9120		SWITCH, TOGGLE POWER, UTILITY
19	14-9134		COVER, UTILITY BOX
20	24-0011-23		SCREW, 5/16"-18 X 3/4, HSFHCS, CLR ZINC
21	21-0700		CU - LIMIT STOP ASSY
22	24-2303		STOP RING HOLD DOWN
23	21-9206		MOTOR, SHORT FRAME WITH ENCODER
24	24-10920-04		BI GB W/WELDED CLUTCH RH APPL
	24-10920-03		BI GB W/WELDED CLUTCH LH APPL

WIRING FOR GT 1400 WITH SECURITRON MAGNETIC SHEAR LOCKS

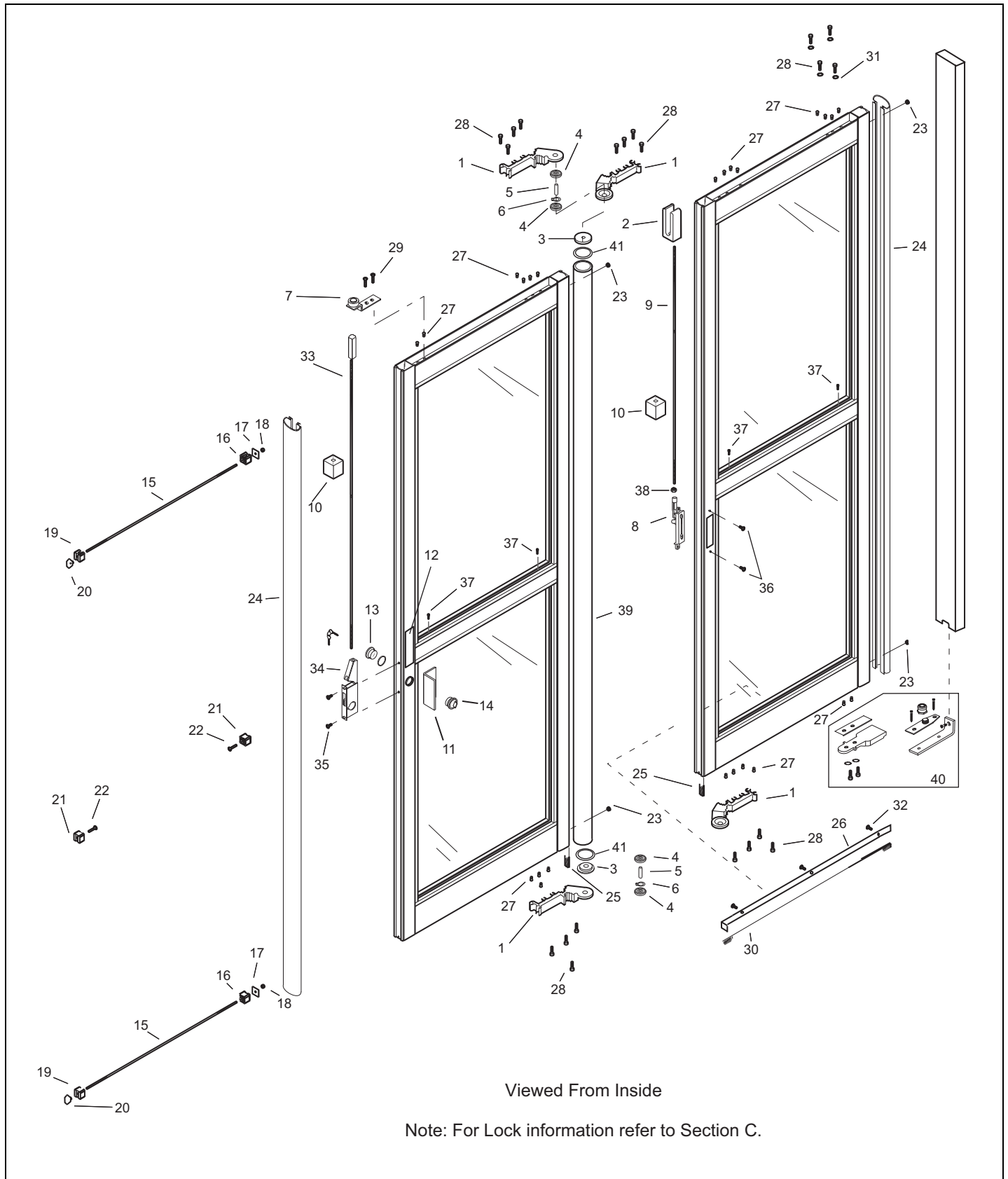


- NOTES:
- MAG LOCK IS CONTINUALLY ENERGIZED UNTIL DOOR IS ACTIVATED.
 - LOCK WILL THEN BE POWERED DOWN BY MEANS OF ELECTROLOCK RELAY BOARD.
 - SETTING ROCKER SWITCH TO AUTO MODE DEENERGIZES LOCK.
 - MOW IS A SIEMENS MODEL 5 AK29 METAL OXIDE VARISTOR
 - USING HANDY TERMINAL CHANGE AUXILIARY OUTPUT SETTING TO ZERO (0) ON MICROPROCESSOR, STEW USING THE FOLLOWING SEQUENCE:
 - SET UP AND PROGRAM U ACQUISITION
 - SET UP AND PROGRAM ACQUISITION
 - SET UP AND ACQUISITION
 - SET DIP-SWITCHES 9 & 10 ON ACQUISITION TO "ON"

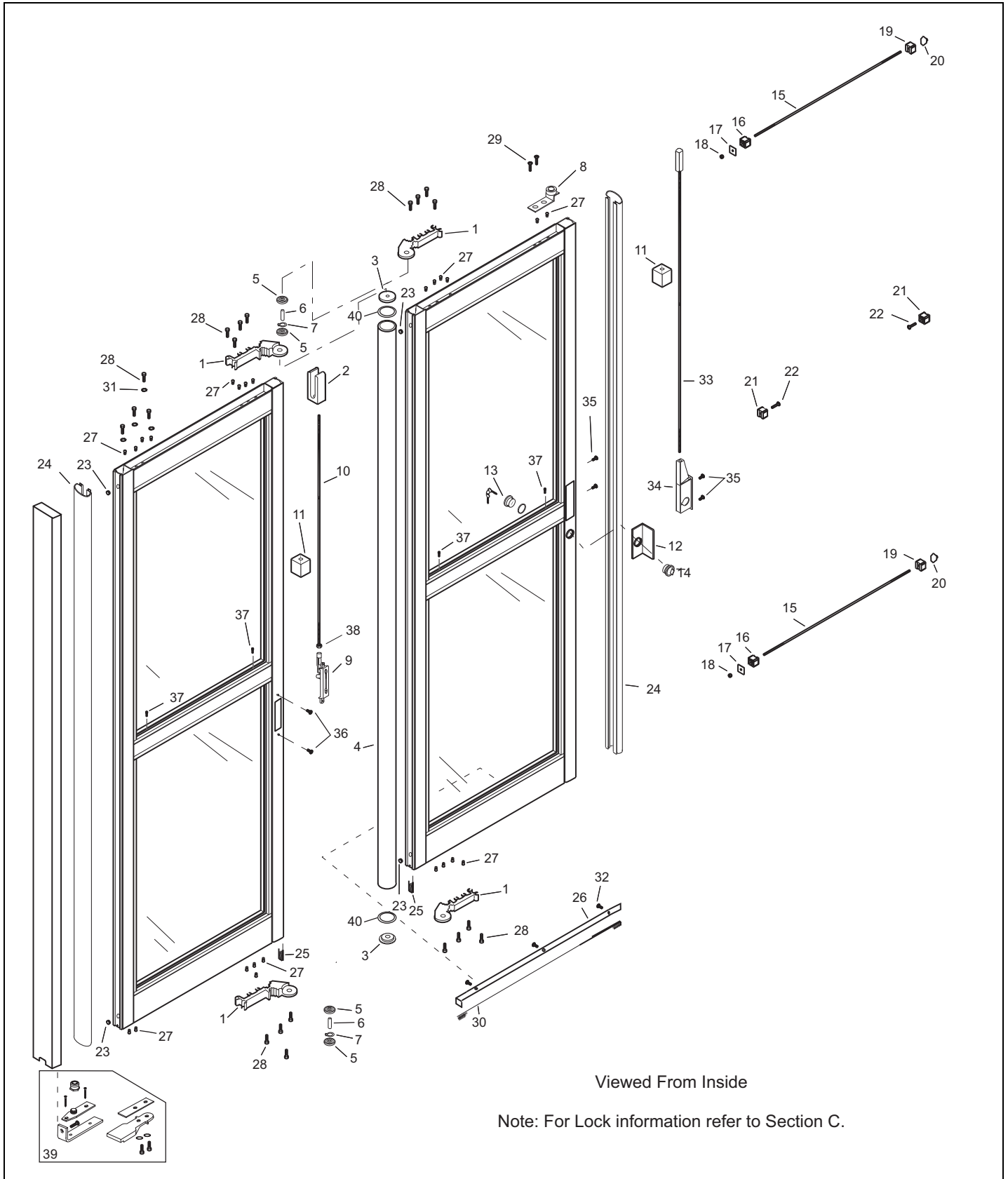




Item	Part	Select Finish	Description
1	24-0015-63		SCREW - PHILLIPS HD MACH #10-24 X 1 1/4
2	14-8962		MAGNETIC POLE PIECE - W/LIP
3	14-8965		SPACER, SLEEVE MAGNETIC LATCH
4	14-8319		MAGNET, CERAMIC
5	24-8977-0X		CENTER PLATE, HEADER
	24-9447-0X		END PLATE, HEADER - LH
	24-9448-0X		END PLATE, HEADER - RH
6	22-9222		BREAK OUT SW ASSY FULL OPN & PKTD GT1175
7	14-8161-01		TAPE, FOAM - GRAY
8	24-9238-0X		HEADER DRESS PLATE W/SWITCH PREP 204
	24-9239-0X		HEADER DRESS PLATE W/SWITCH PREP 204
9	21-8961-0X		LOWER SPINDLE GUIDE SUB-ASSY
10	24-0787		BALL BEARING
11	22-8971		DRIVEBAR W/LDMNT NH COMP W/8969-8970 BIFD
12	14-9201		SHIPPING STICKER - REMOVE BOLT
13	24-8972-0X		GUIDE CHANNEL LH
	24-8973-0X		GUIDE CHANNEL RH 204
14	14-8990		BEARING, SLEEVE
15	14-8413-02		FLEXIBLE MAGNETIC STRIP
16	14-8964		BLOCK, LATCH - MAGNETIC
17	24-0011-03		SCREW - PHILLIPS HD MACH #10-24 X 1/2
18	14-2279-05		PILE WEATHERING, BLK - ADHESIVE BACKED
19	24-1849		LOCK COVER PLATE - BOTTOM
20	22-8983-10		PUSH ROD WELDMNT - BIFOLD
	22-8983-20		PUSH ROD WELDMNT - BIFOLD
21	24-0021-28		HEX NUT 3/8 - 24 LH THREADS
22	24-0019-03		WASHER, STAR 3/8" EXTERNAL TOOTH
23	14-9546		ROD END THREAD LH
24	24-0021-05		HEX NUT 3/8"-24
25	14-9545		ROD END THREAD RH
26	14-8985		BELL CRANK, SPINDLE
27	24-0014-33		SCREW - HEX HD CAP 3/8-24 X 1 1/2
28	24-0667-01		SPACER, MOUNTING - END CAP
29	24-0021-29		HEX LOCKNUT NYLON INSERT 3/8"-24
30	24-0014-14		SCREW - HEX HD MACH 5/16-24 X 5/8
31	24-8976		BELL CRANK, OPERATOR
32	14-8995		BUSHING, SUPPORT GUIDE/CHANNEL
33	11-9363		KIT BIFOLD MAGNETIC LATCH RETROFIT
34	14-8963		MAGNETIC POLE PIECE



Item	Part	Select Finish	Description
1	24-8923-0X	★	CENTER HINGE, MACHINED- RH
2	24-8937		LOCK BOLT - PIVOT PANEL
3	14-8947		END PLUG, HINGE TUBE
4	24-0414		BEARING, BALL
5	14-8956		PIN, HINGE FATIGUE PROOF, COLD FINISHED
6	24-1193-16		RING, SHAFT 0.394 DIA EXTERNAL SERIES
7	22-8939		NOSE GUIDE ASSY - BIFOLD
8	24-8948-0X	★	FLUSH BOLT KAWNEER - RD FACE
9	24-8949		LOCK ROD, FOR FLUSH BOLT - 3.38'
10	14-9358		ANTI-RATTLE - FOAM BLOCK 1.5 X 1.5
11	24-9379		OBSOLETE-GUARD LOCK CYLINDER - BIFOLD
12	14-9569		DECAL, LOCKING
13	22-4495-01		KEYED ALIKE LOCK CYLINDERS SILVER
	22-0950-01		OBSOLETE USE 22-4495-01
14	22-0090-0X		CYLINDER, THUMB TURN SILVER
15	14-3624		THREADED ROD, 3/8"-16 - ZINC PLATED
16	24-9503		CLIP, MUNTIN BAR - RAIL .500 HOLE
17	14-9225		BACKING PLATE, TIE ROD - DOOR ASSEMBLY
18	24-0021-21		NUT, WHIZLOCK, 3/8-16, ZINC
19	24-9504		CLIP, MUNTIN BAR - RAIL .386 HOLE
20	14-9279		OFFSET TEE NUT, 3/8"-16
21	24-9502		CLIP, MUNTIN BAR - RAIL .261 HOLE
22	24-4941-02		SCREW, PH FL HD 1/4-20 X 1" TRILOBE FORM
23	14-9511-04		PLUG, DOME
24	14-9705-01		WEATHER STRIP BULB, BLACK IN BULK
25	14-2279-05		PILE WEATHERING, BLK - ADHESIVE BACKED
26	14-5636-01		EXTRUSION, ALUM - WEATHERING, FLAT
27	14-8640-01		RIVNUT, 1/4"-20 AVK #AKS4-420-165
28	24-0011-10		SCREW - PHILLIPS HD MACH 1/4-20 X 2
29	24-0014-02		SCREW - HEX HD CAP 1/4-20 X 3/4
30	14-4899-40		BRUSH, WTHRING-.006, BRISTENYLON A.44, B
31	24-0019-05		WASHER, LOCK, 1/4", EXTERNAL TOOTH
32	24-0013-04		SCREW - PHLLPS TRUSS HD MACH #6-32 X 1/2
33	22-4412		HEADER LOCK ROD ASSY LESS SCREW PACK
34	14-2046-03		FLUSH BOLT W/O FACEPLATE
35	24-0011-84		SCREW - PHILLIPS HD MACH #8-32 X 1/2
36	24-0011-72		SCREW, PHLLPS HD MACH 10-24 X 3/8"UND
37	24-0094-01		SCREW, PHLLPS PAN HD MACH #10 X 1/2" A
38	24-0021-14		HEX NUT 1/4"-20
39	24-8958-0X	★	HINGE TUBE, 6.58'
40	22-9643		FLOOR PIVOT ASSY BIFOLD
41	14-12950		O-RING, 1.50 OD X 1.25 ID, EPDM



Item	Part	Select Finish	Description
1	24-8924-0X	★	CENTER HINGE, MACHINED-LH
2	24-8937		LOCK BOLT - PIVOT PANEL
3	14-8947		END PLUG, HINGE TUBE
4	24-8958-0X	★	HINGE TUBE, 6.58'
5	24-0414		BEARING, BALL
6	14-8956		PIN, HINGE FATIGUE PROOF, COLD FINISHED
7	24-1193-16		RING, SHAFT 0.394 DIA EXTERNAL SERIES
8	22-8939		NOSE GUIDE ASSY - BIFOLD
9	24-8948-0X	★	FLUSH BOLT KAWNEER - RD FACE
10	24-8949		LOCK ROD, FOR FLUSH BOLT - 3.38'
11	14-9358		ANTI-RATTLE - FOAM BLOCK 1.5 X 1.5
12	24-9379		OBSOLETE-GUARD LOCK CYLINDER - BIFOLD
13	22-4495-01		KEYED ALIKE LOCK CYLINDERS SILVER
	22-0950-01		OBSOLETE USE 22-4495-01
14	22-0090-0X		CYLINDER, THUMB TURN SILVER
15	14-3624		THREADED ROD, 3/8"-16 - ZINC PLATED
16	24-9503		CLIP, MUNTIN BAR - RAIL .500 HOLE
17	14-9225		BACKING PLATE, TIE ROD - DOOR ASSEMBLY
18	24-0021-21		NUT, WHIZLOCK, 3/8-16, ZINC
19	24-9504		CLIP, MUNTIN BAR - RAIL .386 HOLE
20	14-9279		OFFSET TEE NUT, 3/8"-16
21	24-9502		CLIP, MUNTIN BAR - RAIL .261 HOLE
22	24-4941-02		SCREW, PH FL HD 1/4-20 X 1" TRILOBE FORM
23	14-9511-04		PLUG, DOME
24	14-9705-01		WEATHER STRIP BULB, BLACK IN BULK
25	14-2279-05		PILE WEATHERING, BLK - ADHESIVE BACKED
26	14-5636-01		EXTRUSION, ALUM - WEATHERING, FLAT
27	14-8640-01		RIVNUT, 1/4"-20 AVK #AKS4-420-165
28	24-0011-10		SCREW - PHILLIPS HD MACH 1/4-20 X 2
29	24-0014-02		SCREW - HEX HD CAP 1/4-20 X 3/4
30	14-4899-40		BRUSH, WTHRING-.006, BRISTENYLON A.44, B
31	24-0019-05		WASHER, LOCK, 1/4", EXTERNAL TOOTH
32	24-0013-04		SCREW - PHLLPS TRUSS HD MACH #6-32 X 1/2
33	22-4412		HEADER LOCK ROD ASSY LESS SCREW PACK
34	14-2046-03		FLUSH BOLT W/O FACEPLATE
35	24-0011-84		SCREW - PHILLIPS HD MACH #8-32 X 1/2
36	24-0011-72		SCREW, PHLLPS HD MACH 10-24 X 3/8"UND
37	24-0094-01		SCREW, PHLLPS PAN HD MACH #10 X 1/2" A
38	24-0021-14		HEX NUT 1/4"-20
39	22-9643		FLOOR PIVOT ASSY BIFOLD
40	14-12950		O-RING, 1.50 OD X 1.25 ID, EPDM

This Page Intentionally Left Blank