



## GT1175 U-30 Electric Lock Retrofit Kit Quick Setup Parts Guide

P/N 15-12499-030 Rev 12-19-14

Nabco Entrances Inc. S82 W18717 Gemini Drive Muskego Wisconsin 53150  
Phone: (877) 622-2694 Fax: (888) 679-3319 www.nabcoentrances.com

*Associated Manuals Part Numbers: "1175 Electrical Installation Manual \*\*with U30 Microprocessor Controller\*\* (Revision D Software)  
Rev 1-10-14 (P/N 15-10596-30)*

**WARNING**

- Turn OFF all power to the Automatic Door if a Safety System is not working.
- Instruct the Owner to keep all power turned OFF until corrective action can be achieved by a NABCO trained technician. Failure to follow these practices may result in serious consequences.
- NEVER leave a Door operating without all Safety detection systems operational.

### Table of Contents

**SECTION 1: RETROFIT THE BELT CLIP . . . . . 3**

**SECTION 2: INSTALL THE ELECTRIC LOCK. . . . . 4**

**SECTION 3: U30 WITH FAIL SAFE OR FAIL SECURE ELECTRIC LOCK . . . . . 5**

**SERVICE PARTS: U-30 ELECTRIC LOCK RETROFIT KIT . . . . . 6**

**THIS PAGE IS INTENTIONALLY LEFT BLANK**

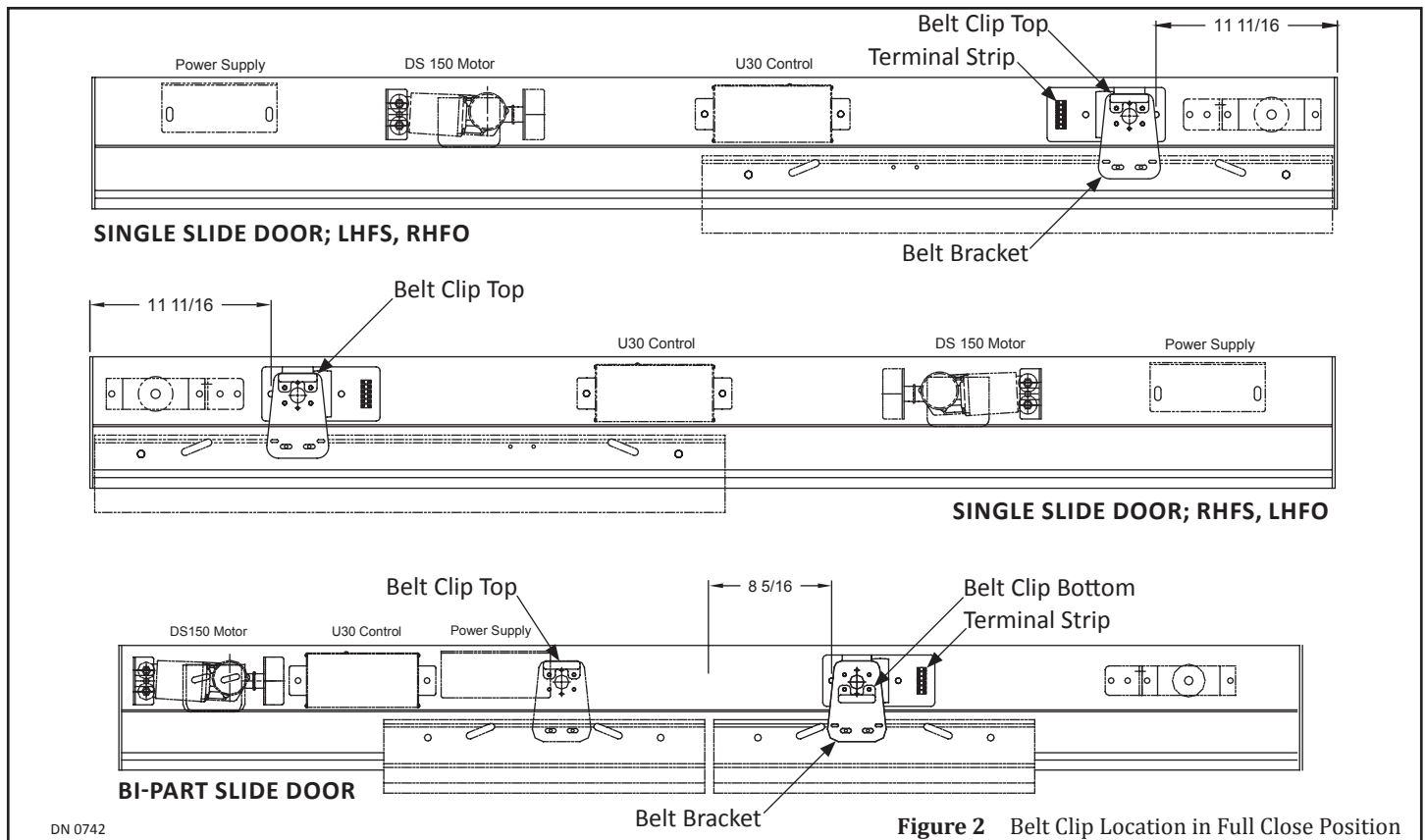
### SECTION 1: Retrofit the Belt Clip

*Note: Electric Locks can not prevent Breakout. If preventing Breakout is deemed necessary, panic hardware must be fitted to the Door Panels.*

1. Remove (2) 1/4-20 x 1 inch Hex Head screws used to secure the Belt Clip to the Belt Bracket. Save the spacers, screws and lock washers for reinstallation.
  - a. Ensure the Belt Clip stays intact with the Belt, so the Belt does not lose Belt Tension.
2. Remove (2) 1/4-20 x 3/4 inch Hex Head screws used to secure the Belt Bracket to the Carrier. Save screws for reinstallation.
3. Obtain the Belt Clip Assembly provided within the Electric Lock Retrofit Kit.
4. Review the Belt Clip Assembly to ensure the secured position will match Figure 1 and Figure 2.
  - a. If necessary rotate the Latch so the Flat Side of Latch faces the Terminal Strip located on the Lock Assembly.

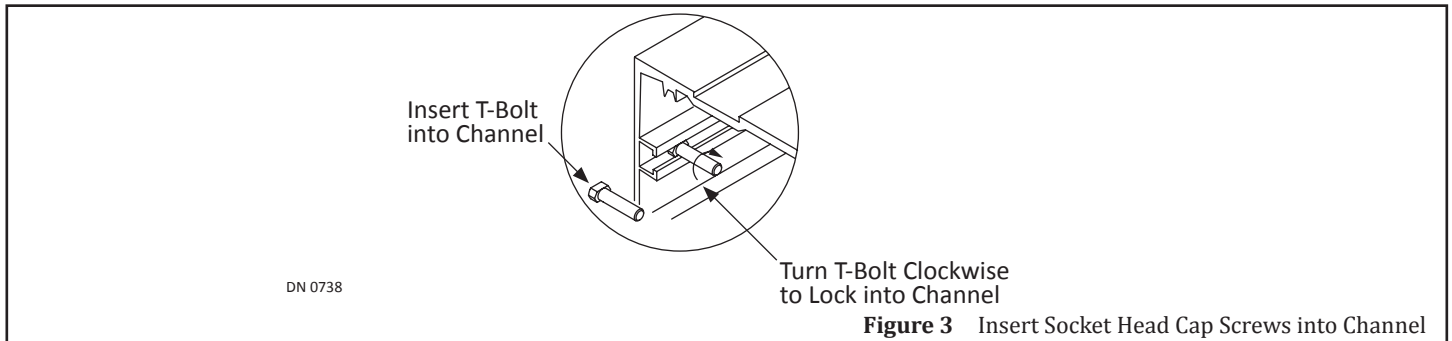


5. Secure the Belt Bracket to the Belt Clip with (2) 1/4-20 x 1 inch Hex Head screws, lock washers, and spacers that were saved for reinstallation. Do not overtighten the screws.
  - a. Ensure the Belt Clip is in the correct position (Top vs Bottom) as shown in Figure 2.
6. Secure the Belt Bracket to the Carrier with (2) 1/4-20 x 3/4 inch Hex Head screws that were saved for reinstallation. Do not overtighten the screws.

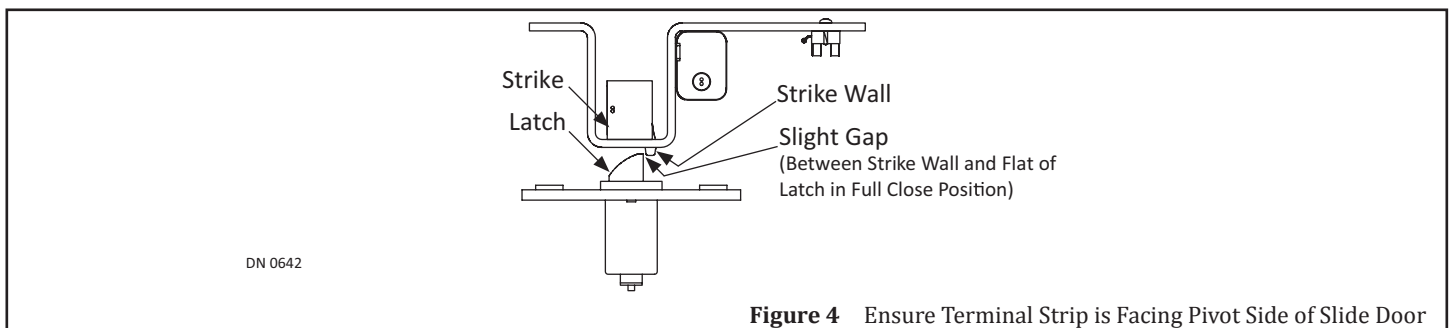


## SECTION 2: Install the Electric Lock

1. Insert (2) 8 -16 x 3/4 inch T-Bolts into the Channel located inside Header and turn clockwise so they do not fall out.



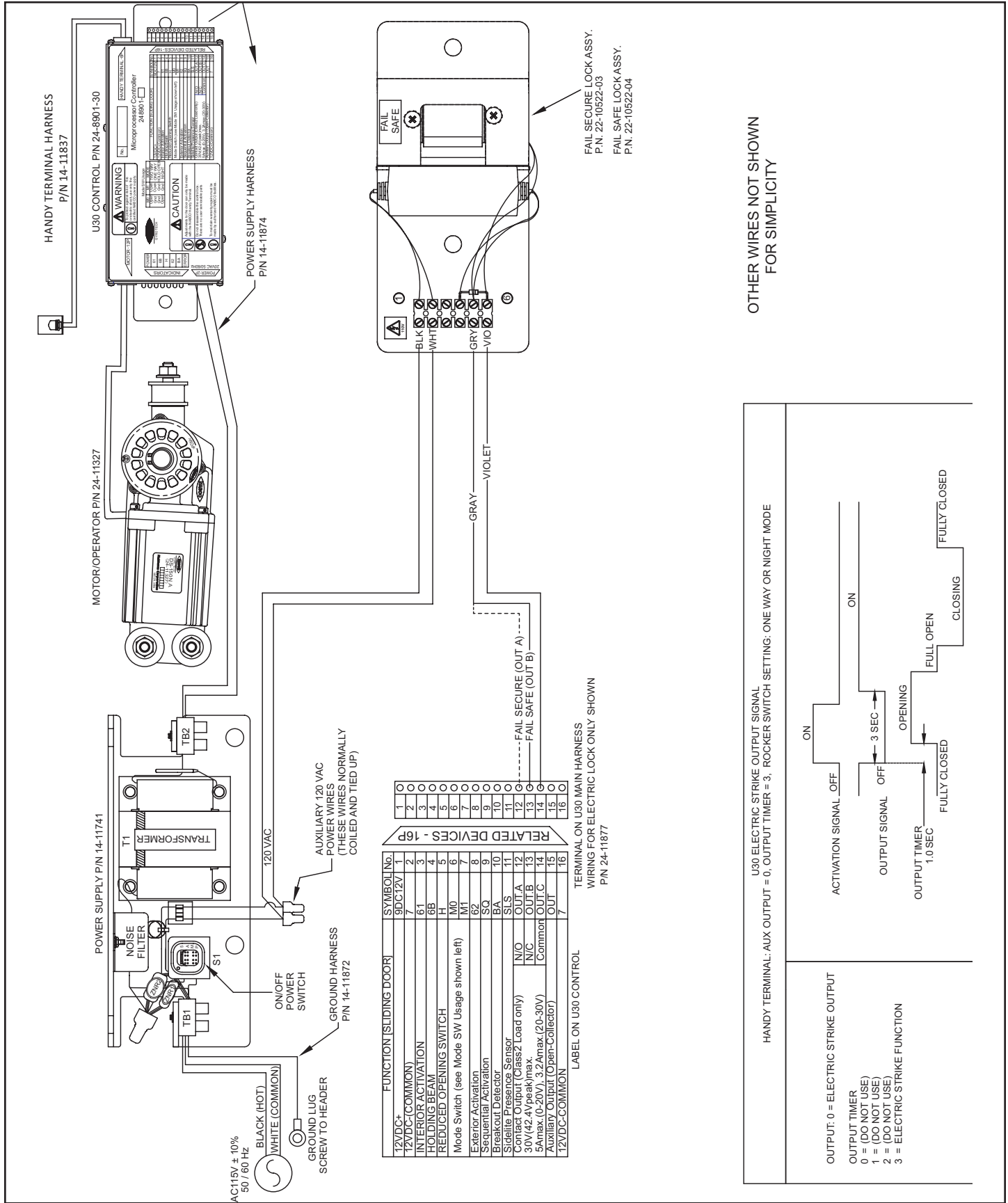
2. Obtain the Electric Lock provided within the Electric Lock Retrofit Kit.
3. Place the Electric Lock over the (2) 3/8-16 x 3/4 inch T-Bolts.
  - a. Ensure the Terminal Strip is facing the Pivot side of Slide Door.
4. Loosely secure the Electric Lock to the T-Bolts with (2) 3/8-16 Whizlock nuts.
5. Position the Electric Lock so the Strike is directly behind the Latch when the Slide door is in the Fully Closed Position. Please see Figure 4.
  - a. Ensure there is a slight gap between the Strike Wall and Flat of Latch.



6. Tighten (2) 3/8-16 Whizlock nuts to secure the Electric Lock to the Channel.
7. Wire the Electric Lock. Please see Section 3.

### SECTION 3: U30 with Fail Safe or Fail Secure Electric Lock

Note: Electric Lock only works in One Way mode or Night Mode.



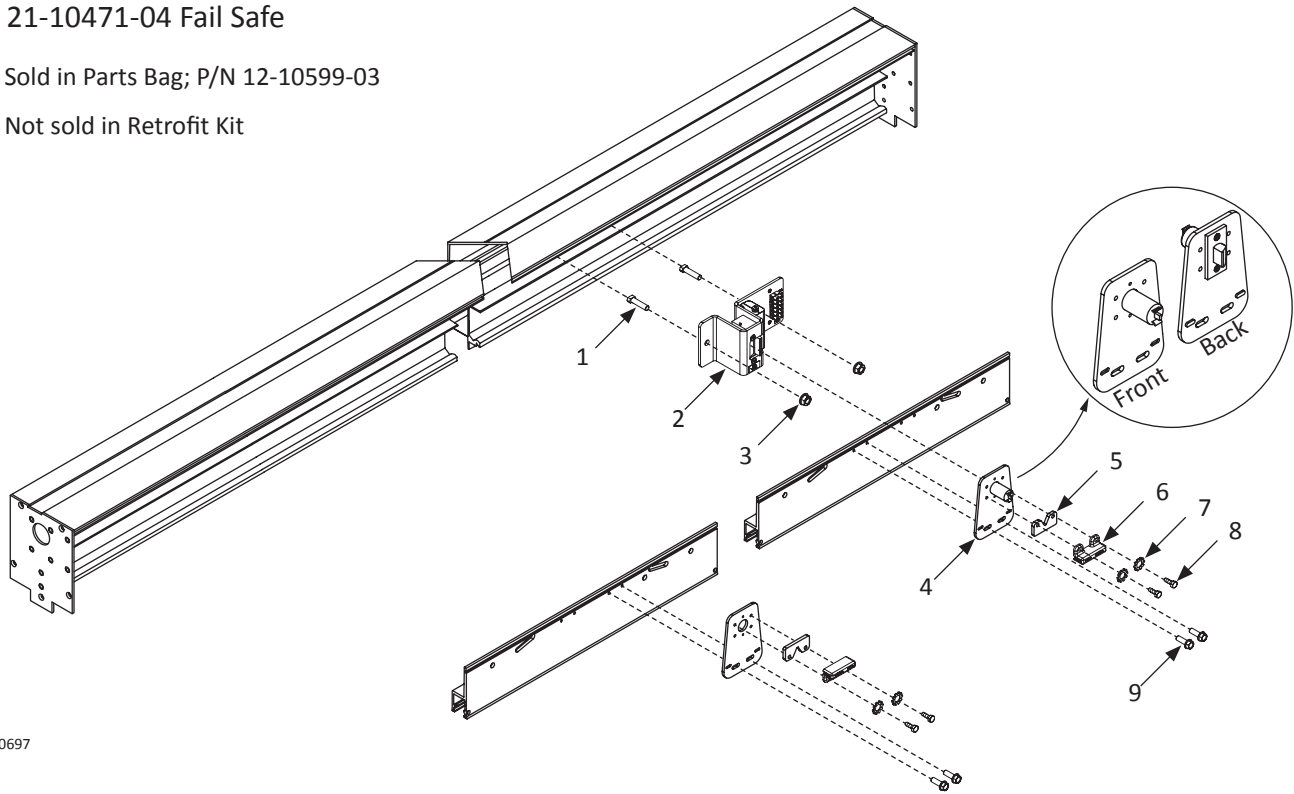
### SERVICE PARTS: U-30 ELECTRIC LOCK RETROFIT KIT

P/N 21-10471-03 Fail Secure

P/N 21-10471-04 Fail Safe

\* Sold in Parts Bag; P/N 12-10599-03

\*\* Not sold in Retrofit Kit



DN 0697

Header			
Item	Part	Finish/Sizes/Notes	Description
1	14-14592		T-BOLT, 3/8"-16 X .75 LG
2	22-10522-03	Fail Secure	VON DUPRIN FAIL SEC ELE STRIKE SUB ASSY
	22-10522-04	Fail Safe	VON DUPRIN FAIL SAFE ELE STRIKE SUB ASSY
3	24-0021-21		NUT, WHIZLOCK, 3/8-16, ZN
4	14-12104-10		BELT BRACKET, ELECTRIC LOCK ASSEMBLY
5	14-11870		SPACER, BELT CLIP, 1175
6	24-11493		CLIP, BELT
7	24-0019-05		1/4" EXTERNAL STAR WASHER
8	24-0014-01		HHCS, 1/4-20 X 1", ZN
9	24-0014-15		HHCS, 1/4-20 X 3/4