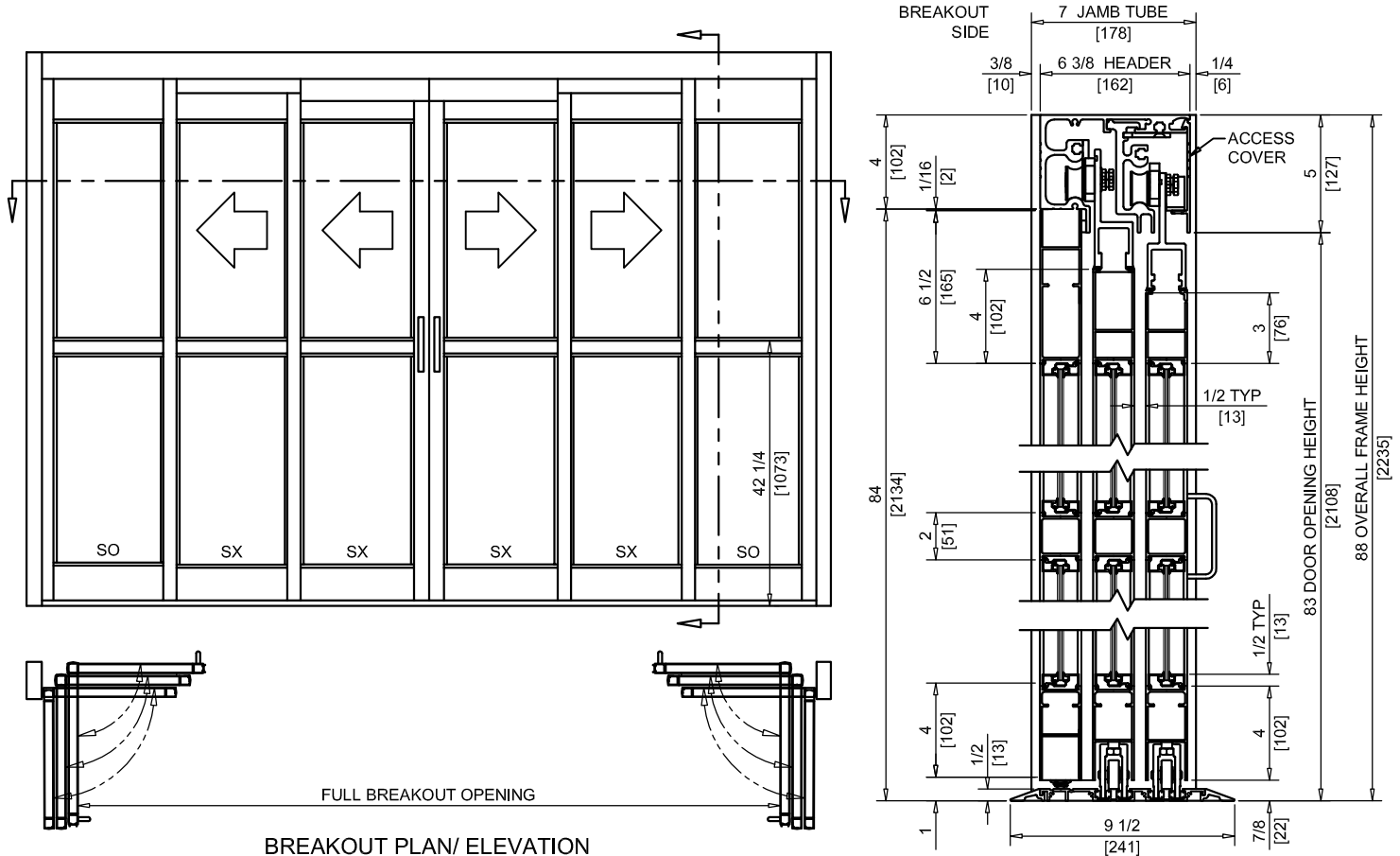




NABCO Entrances Inc.  
 582 W18717 Gemini Drive Muskego, WI 53150  
 www.nabcoentrances.com 1-877-622-2694

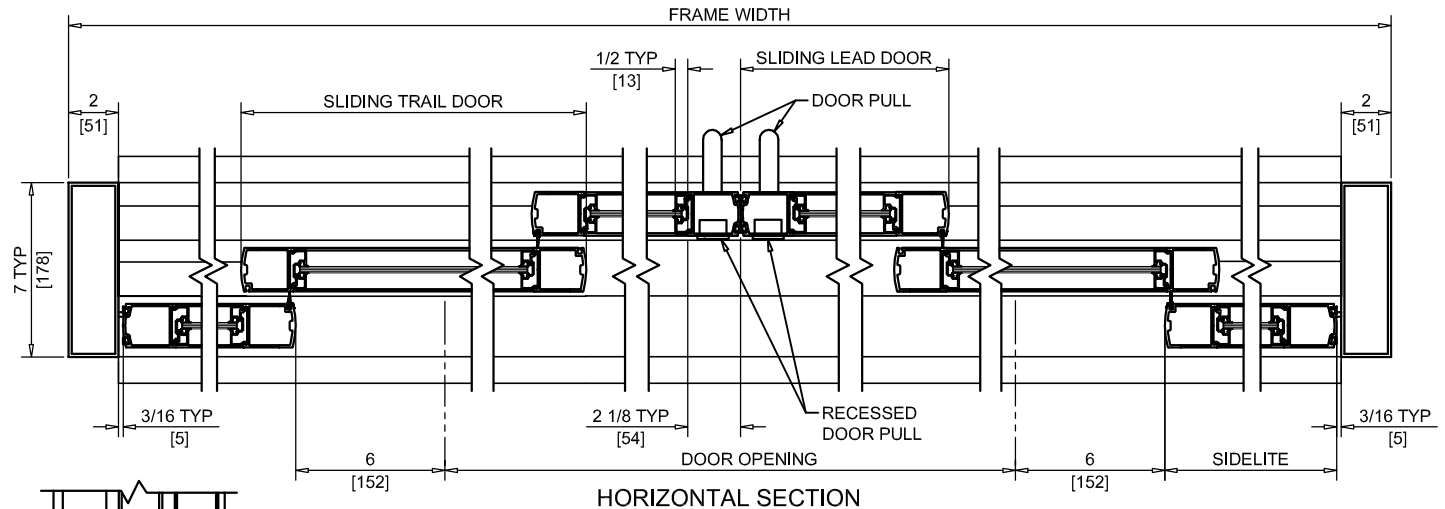
JOB NAME: \_\_\_\_\_  
 LOCATION: \_\_\_\_\_  
 DISTRIBUTOR: \_\_\_\_\_  
 DOOR #: \_\_\_\_\_ DATE: \_\_\_\_\_  
 SHEET \_\_\_\_ OF \_\_\_\_

**GT2150TB**  
 BI-PART SLIDE  
 FULL OPEN  
 W/FLOOR TRACK  
 TELESCOPIC

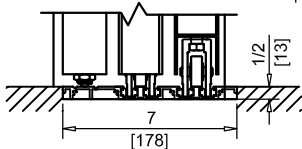


BREAKOUT PLAN/ ELEVATION  
 ACCESS COVER ON NON-BREAKOUT SIDE

VERTICAL SECTION  
 (WITH DOOR OPEN)



HORIZONTAL SECTION



RECESSED TRACK  
 (OPTIONAL)

NOTES:

- "D" HANDLE PROVIDED ON NON BREAKOUT SIDE. RECESSED HANDLE PROVIDED ON BREAKOUT SIDE.
- THRESHOLD THROUGH DOOR OPENING IS STANDARD.
- BREAKOUT IN ANY POSITION.
- UNITS ARE HANDED FROM THE BREAKOUT SIDE.
- VINYL WEATHERING IS STANDARD.
- CASTERS ARE REQUIRED ON ALL PANELS GREATER THEN 54" WIDE AND/OR 200 LBS OR MORE.
- ROUGH OPENING EQUALS FRAME WIDTH +1/2" AND FRAME HEIGHT +1/4".

	DOOR OPENING	FULL BREAKOUT OPENING	FRAME WIDTH	SLIDING LEAD DOOR	SLIDING TRAIL DOOR	SIDELITE
MIN.	49" [1245]	74" [1880]	8'-0" [2438]	17 1/2" [445]	17 1/2" [445]	15 15/16" [389]
MAX.	193" [4902]	290" [7366]	26'-0" [7925]	53 1/2" [1359]	53 1/2" [1359]	51 5/16" [1303]