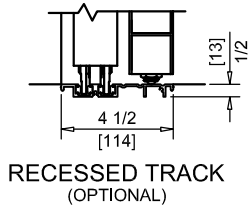
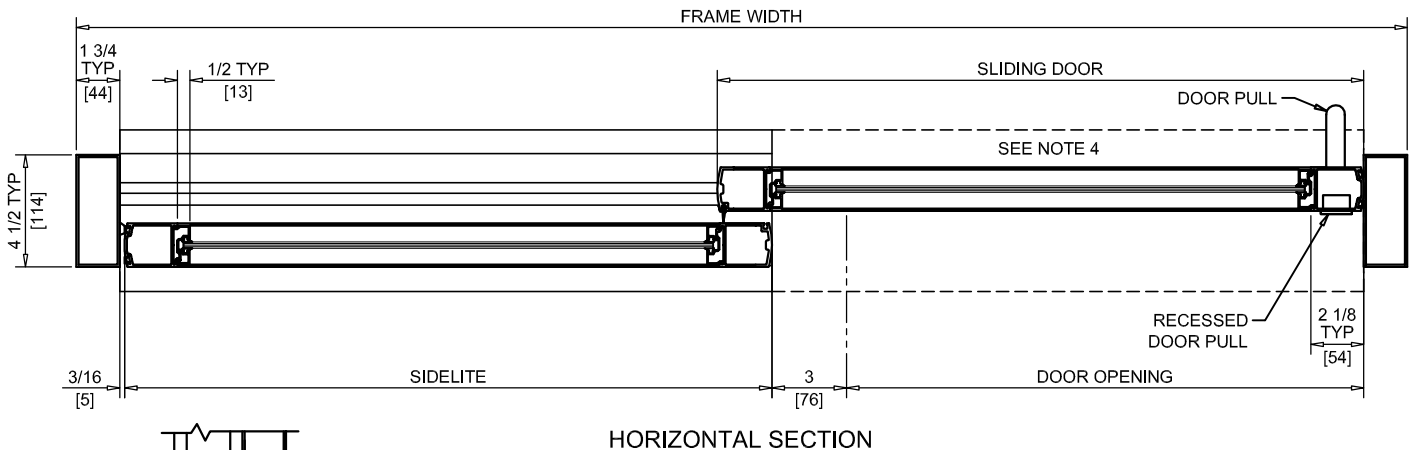
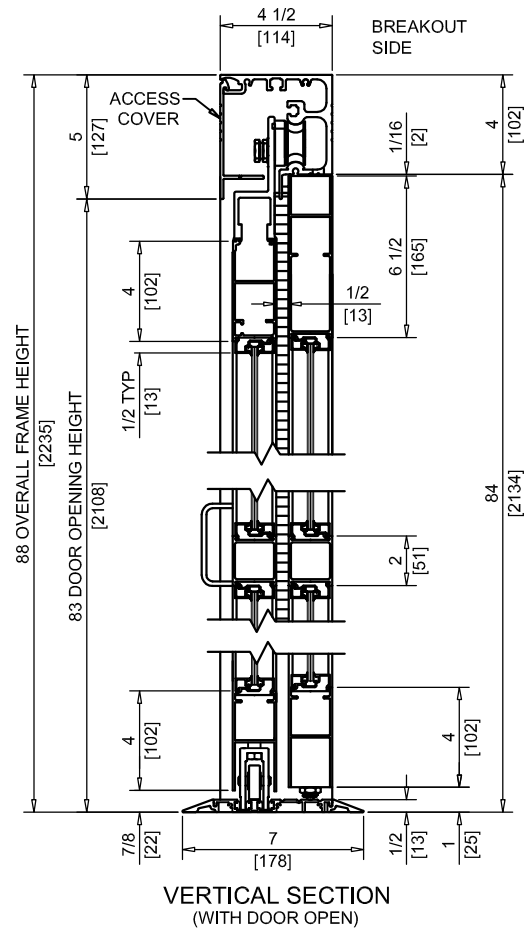
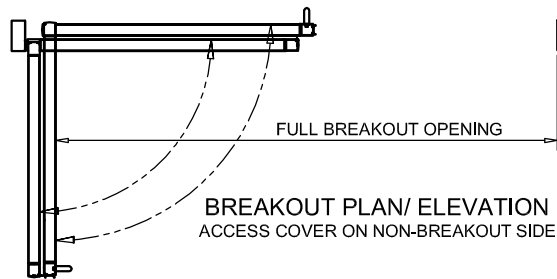
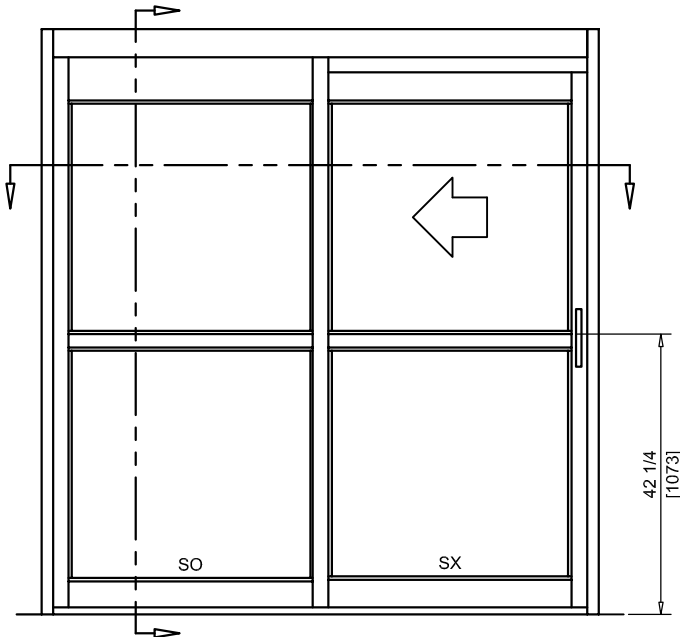




NABCO Entrances Inc.
 S82 W18717 Gemini Drive Muskego, WI 53150
 www.nabcoentrances.com 1-877-622-2694

JOB NAME: _____
 LOCATION: _____
 DISTRIBUTOR: _____
 DOOR #: _____ DATE: _____
 SHEET _____ OF _____

GT2150L
 SINGLE SLIDE
 LEFT HAND
 FULL OPEN
 W/FLOOR TRACK



HORIZONTAL SECTION

NOTES:

1. "D" HANDLE PROVIDED ON NON BREAKOUT SIDE. RECESSED HANDLE IS PROVIDED ON BREAKOUT SIDE.
2. BREAKOUT IN ANY POSITION.
3. UNITS ARE HANDED FROM THE BREAKOUT SIDE.
4. THRESHOLD IN DOOR OPENING IS OPTIONAL.
5. VINYL WEATHERING IS STANDARD.
6. CASTERS ARE REQUIRED ON ALL PANELS GREATER THEN 54" WIDE AND/OR 200 LBS OR MORE. UNITS REQUIRING CASTERS WILL HAVE REDUCED DOOR OPENING WIDTH.
7. ROUGH OPENING EQUALS FRAME WIDTH +1/2" AND FRAME HEIGHT +1/4".
8. SELF CLOSING AND HOLD OPEN (REQUIRES POWER TO HEADER) FEATURES OPTIONAL ON UNITS WITH SX PANELS UNDER 135 LBS.

DOOR OPENING	FULL BREAKOUT OPENING	FRAME WIDTH	SLIDING DOOR	SIDELITE
36" [914]	73 1/2" [1867]	6'-9 1/2" [2070]	41 1/4" [1048]	38 13/16" [986]
42" [1067]	85 1/2" [2172]	7'-9 1/2" [2375]	47 1/4" [1200]	44 13/16" [1138]
44" [1118]	89 1/2" [2273]	8'-1 1/2" [2477]	49 1/4" [1251]	46 13/16" [1189]
48" [1219]	97 1/2" [2477]	8'-9 1/2" [2680]	53 1/4" [1353]	50 13/16" [1291]