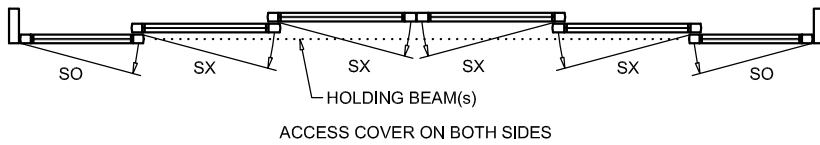
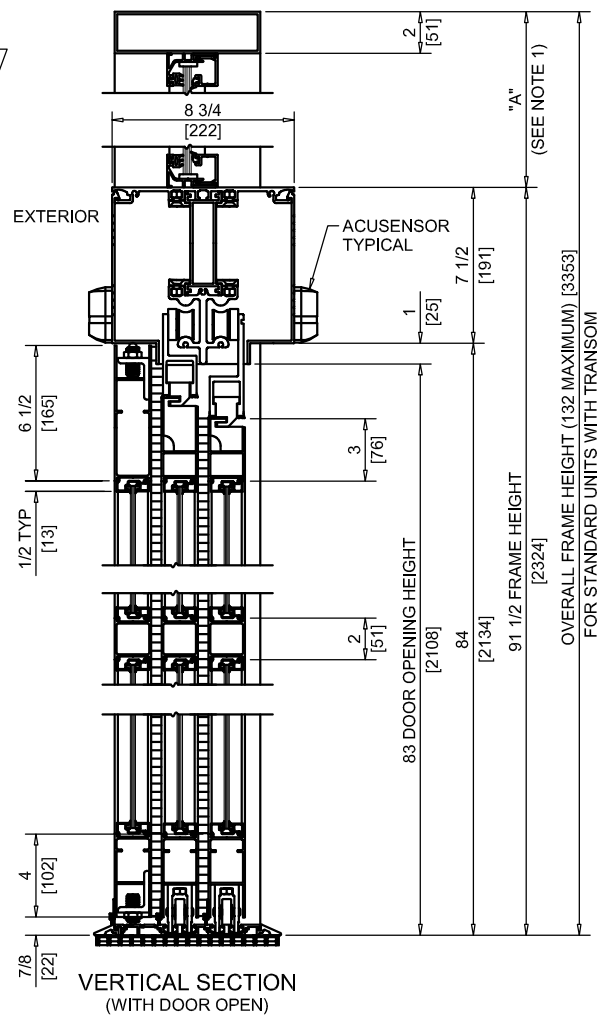
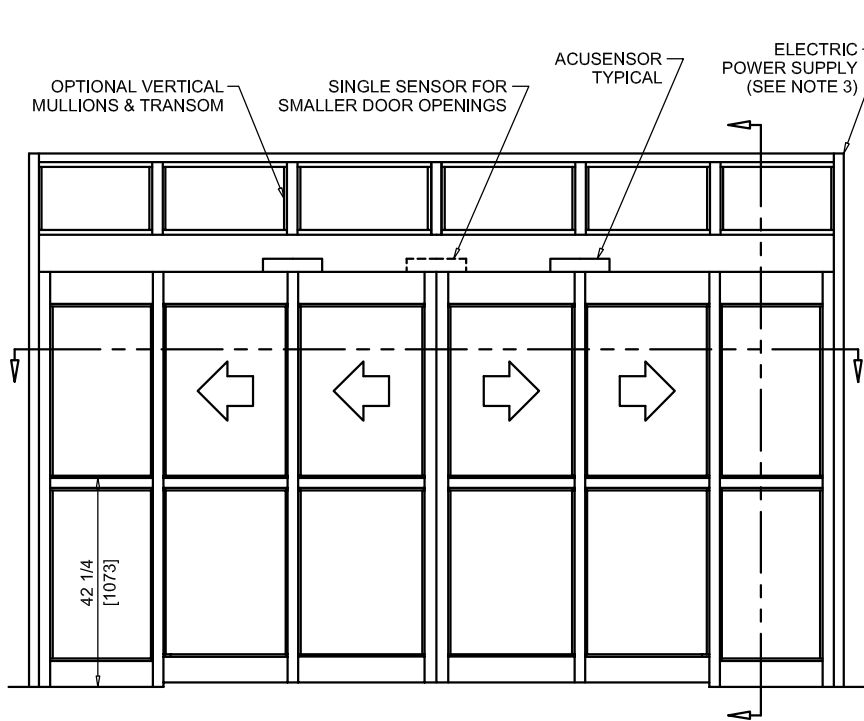




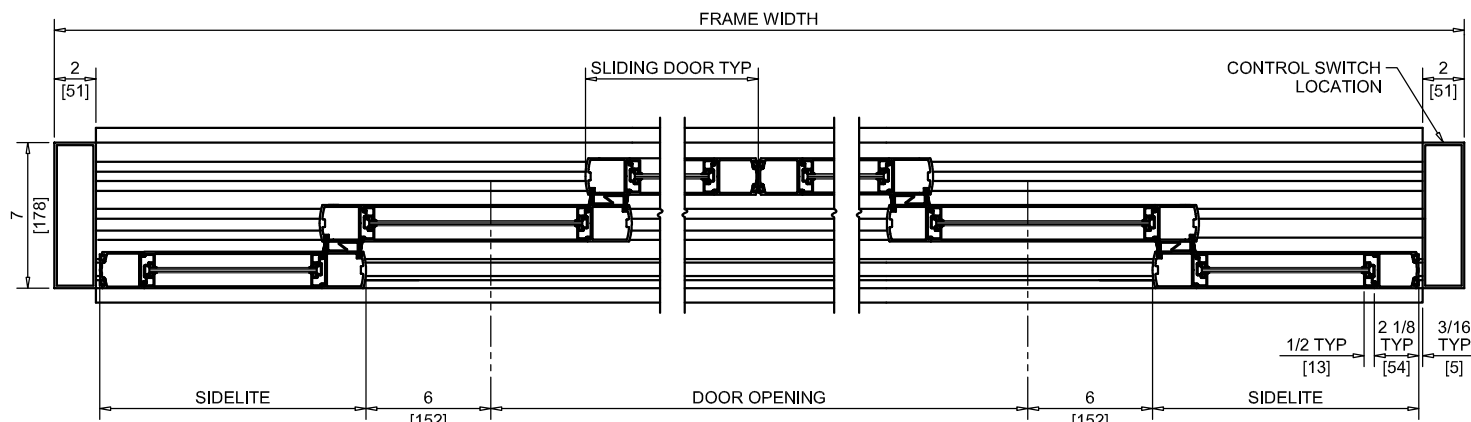
NABCO Entrances Inc.  
 S82 W18717 Gemini Drive Muskego, WI 53150  
 www.nabcoentrances.com 1-877-622-2694

JOB NAME: \_\_\_\_\_  
 LOCATION: \_\_\_\_\_  
 DISTRIBUTOR: \_\_\_\_\_  
 DOOR #: \_\_\_\_\_ DATE: \_\_\_\_\_  
 SHEET \_\_\_\_\_ OF \_\_\_\_\_

**WHISPER SLIDE  
 GT1175-17**  
 BI-PART SLIDE  
 FULL OPEN  
 TELESCOPING



EXTERIOR ELEVATION/PLAN



HORIZONTAL SECTION

- NOTES:
1. TRANSOM HEIGHT (DIMENSION "A") IS DETERMINED PER JOB REQUIREMENTS.
  2. TRANSOM GLAZING IS SURFACE APPLIED FOR ALL GLASS THICKNESSES.
  3. POWER TO HEADER WILL BE 115VAC, 5 AMP PER OPERATOR PROVIDED BY ELECTRICAL CONTRACTOR.
  4. STANDARD LOCATION OF LOCK IS 35" FROM FINISH FLOOR TO CENTERLINE OF KEY CYLINDER.
  5. 1/2" THRESHOLD THROUGH DOOR OPENING IS REQUIRED.
  6. MASONRY OPENING EQUALS FRAME WIDTH +1/2" AND FRAME HEIGHT +1/4".
  7. ONE SET OF HOLDING BEAMS AT 21" AFF STANDARD. SECOND SET AT 51" AFF IS OPTIONAL.

|      | DOOR OPENING   | FULL BREAKOUT OPENING | FRAME WIDTH       | SLIDING DOOR   | SIDELITE       |
|------|----------------|-----------------------|-------------------|----------------|----------------|
| MIN. | 48 5/8" [1235] | 79 1/2" [2019]        | 7'-11 1/2" [2425] | 17 7/16" [443] | 15 1/4" [387]  |
| MAX. | 113" [2870]    | 176" [4470]           | 16'-0" [4876]     | 33 1/2" [851]  | 31 5/16" [795] |