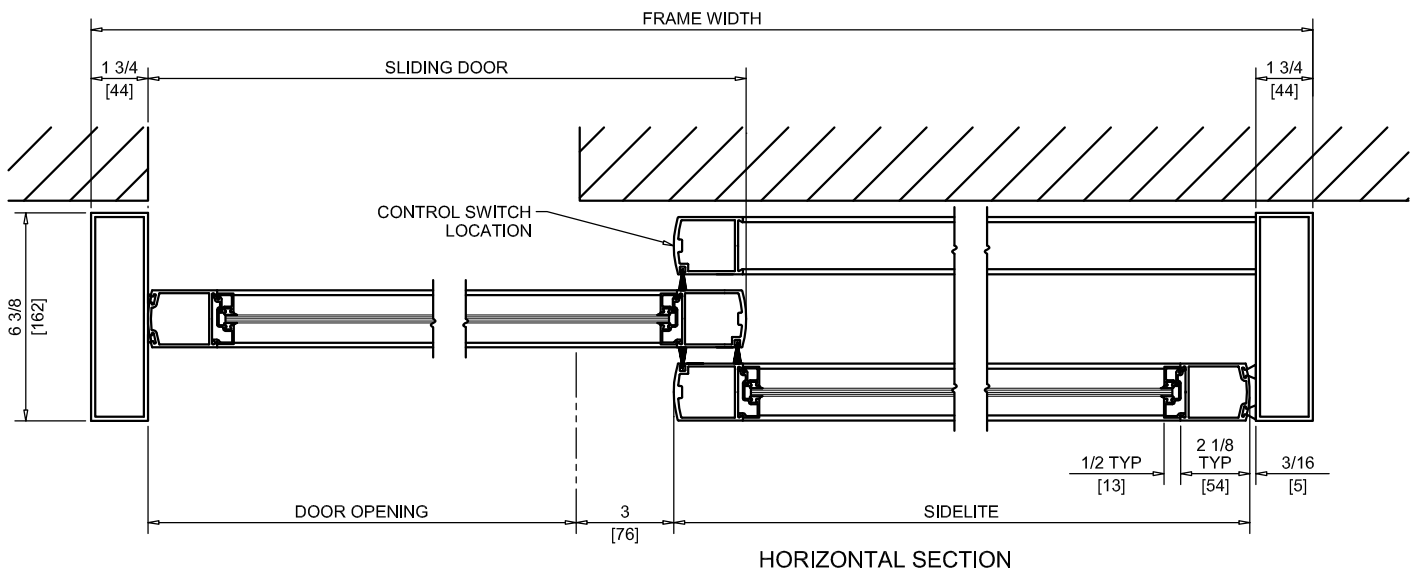
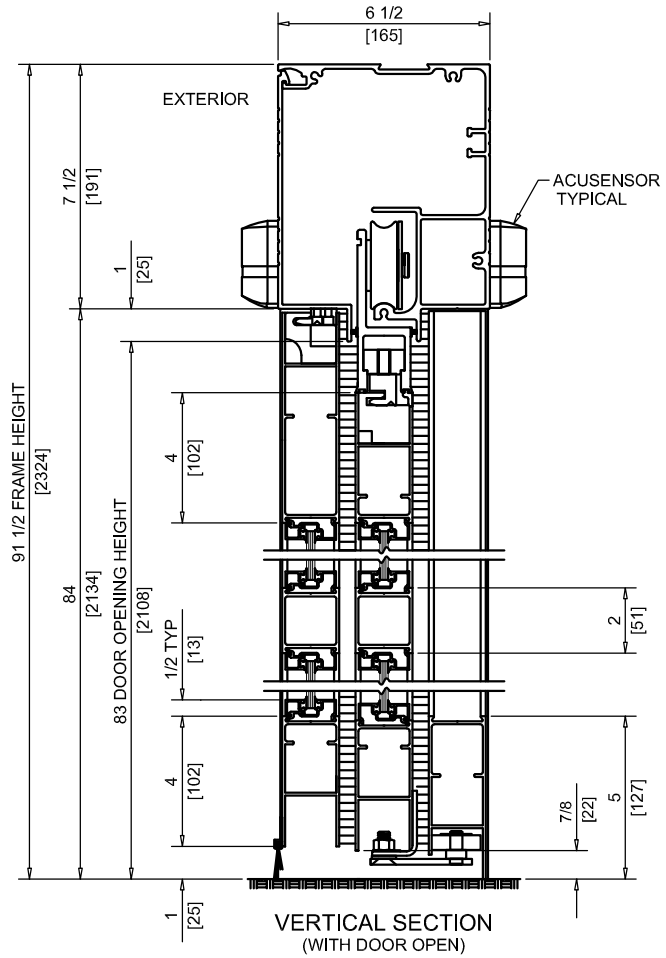
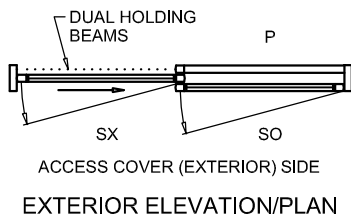
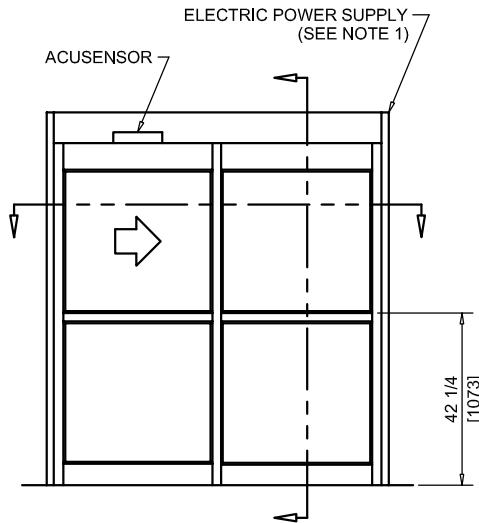




NABCO Entrances Inc.
 582 W18717 Gemini Drive Muskego, WI 53150
 www.nabcoentrances.com 1-877-622-2694

JOB NAME: _____
 LOCATION: _____
 DISTRIBUTOR: _____
 DOOR #: _____ DATE: _____
 SHEET ____ OF ____

WHISPER SLIDE
GT1175-09R
 SINGLE SLIDE
 RIGHT HAND
 FULL OPEN
 SURFACE MOUNTED



DOOR OPENING	FULL BREAKOUT OPENING	FRAME WIDTH	SLIDING DOOR	SIDELITE
36" [914]	39" [990]	7'-0" [2133]	41 1/4" [1047]	41 5/16" [1049]
42" [1066]	45" [1143]	8'-0" [2438]	47 1/4" [1200]	47 5/16" [1201]
44" [1117]	47" [1193]	8'-6" [2590]	49 1/4" [1250]	51 5/16" [1303]
48" [1219]	51" [1295]	9'-0" [2743]	53 1/4" [1352]	53 5/16" [1354]

NOTES:

- POWER TO HEADER WILL BE 115VAC, 5 AMP PER OPERATOR PROVIDED BY ELECTRICAL CONTRACTOR.
- ROCKER SWITCHES WILL BE MOUNTED ON NOSE OF FILLER TUBE UNLESS NOTED OTHERWISE.
- STANDARD LOCATION OF LOCK IS 35" FROM FINISH FLOOR TO CENTERLINE OF KEY CYLINDER.
- TWO SETS OF HOLDING BEAMS STANDARD. ONE SET AT 21" AFF AND ONE SET AT 51" AFF.