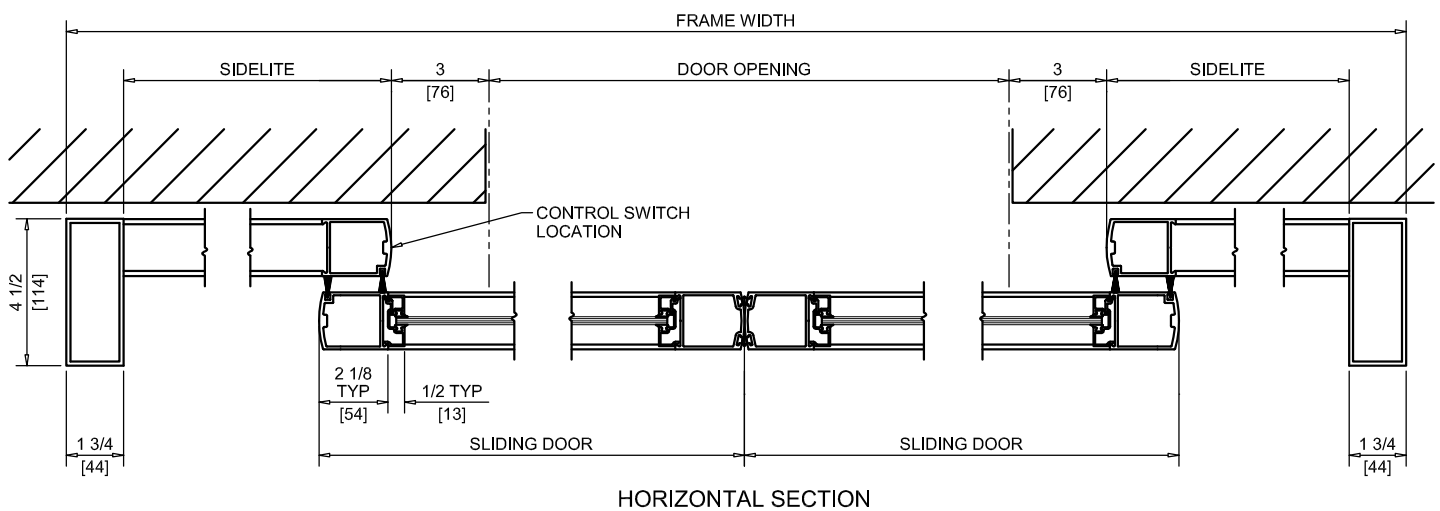
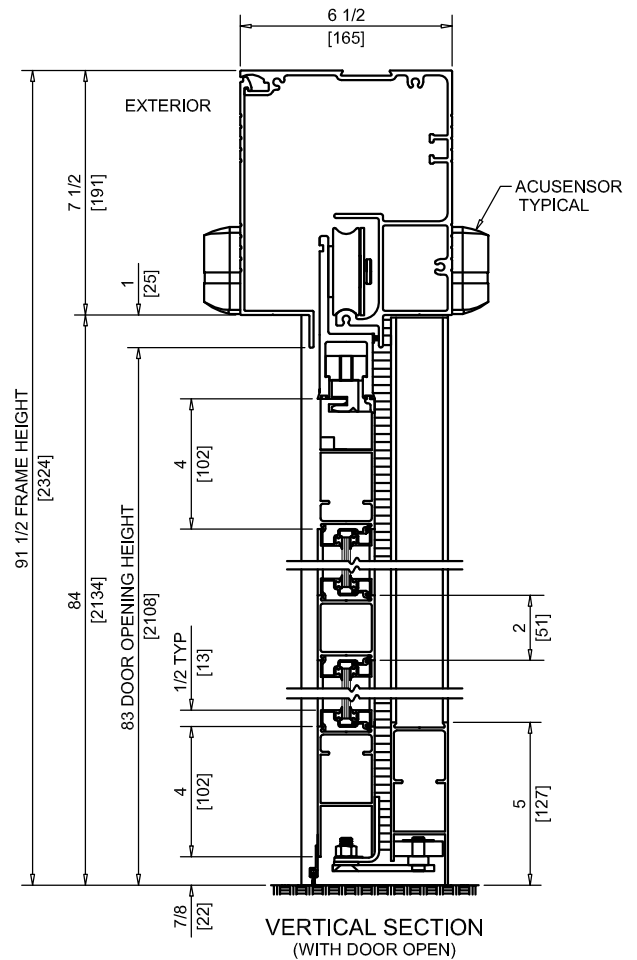
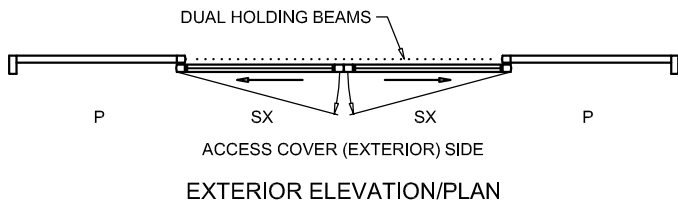
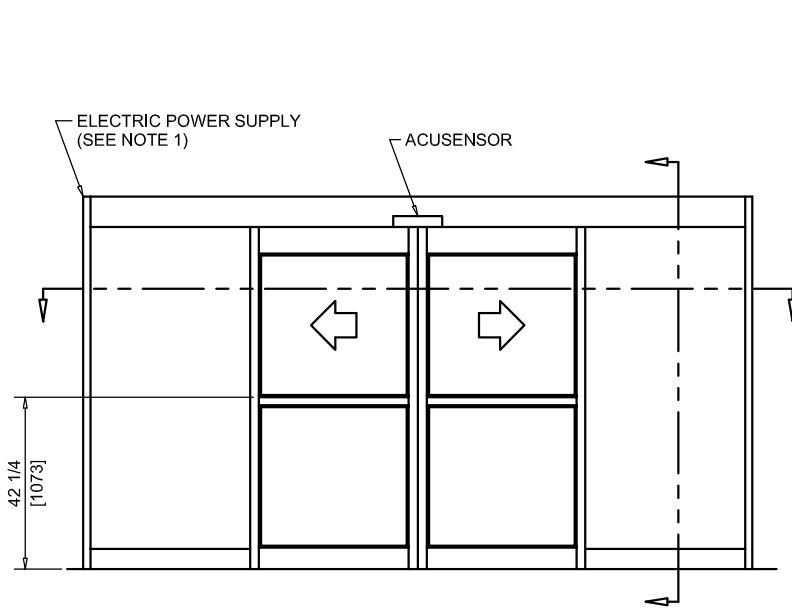




NABCO Entrances Inc.  
 582 W18717 Gemini Drive Muskego, WI 53150  
 www.nabcoentrances.com 1-877-622-2694

JOB NAME: \_\_\_\_\_  
 LOCATION: \_\_\_\_\_  
 DISTRIBUTOR: \_\_\_\_\_  
 DOOR #: \_\_\_\_\_ DATE: \_\_\_\_\_  
 SHEET \_\_\_\_\_ OF \_\_\_\_\_

**WHISPER SLIDE**  
**GT1175-08**  
 BI-PART SLIDE  
 SURFACE MOUNTED



DOOR OPENING	FULL BREAKOUT OPENING	FRAME WIDTH	SLIDING DOOR	SIDELITE
48" [1219]	54" [1371]	10'-0" [3048]	29 1/4" [742]	31 1/4" [794]
60" [1524]	66" [1676]	12'-0" [3657]	35 1/4" [895]	37 1/4" [946]
72" [1828]	78" [1981]	14'-0" [4267]	41 1/4" [1047]	43 1/4" [1099]
84" [2133]	90" [2286]	16'-0" [4876]	47 1/4" [1200]	49 1/4" [1251]
96" [2438]	102" [2590]	18'-0" [5486]	53 1/4" [1352]	55 1/4" [1403]

NOTES:

- POWER TO HEADER WILL BE 115VAC, 5 AMP PER OPERATOR PROVIDED BY ELECTRICAL CONTRACTOR.
- ROCKER SWITCHES WILL BE MOUNTED ON NOSE OF FILLER TUBE UNLESS NOTED OTHERWISE.
- STANDARD LOCATION OF LOCK IS 35" FROM FINISH FLOOR TO CENTERLINE OF KEY CYLINDER.
- TWO SETS OF HOLDING BEAMS STANDARD. ONE SET AT 21" AFF AND ONE SET AT 51" AFF.